

VOTED:

That the Traffic Rules and Orders adopted by the Board of Selectmen July 1, 1940, and subsequent amendments thereto, be and hereby amended in accordance with the provisions of Chapter 89, Section 9 of the General Laws by adding to Article VII, Section 7-11B, Schedule 7-11B, YIELD SIGNS, the following streets are designated as YIELD streets at the intersections and in the direction indicated:

~~Depot Street, both directions at the Cape Cod Rail Trail Crosswalk,  
Great Western Road, both directions at the Cape Cod Rail Trail crosswalk,  
Lothrop Avenue, both directions at the Cape Cod Rail Trail crosswalk,  
Queen Anne Road, both directions at the Cape Cod Rail Trail crosswalk,  
Pleasant Lake Avenue, Route 124, both directions at connecting the Cape Cod Rail Trail crosswalk (two-  
crossings),  
Pleasant Lake Avenue, Route 124, both directions at the Old Colony Rail Trail crosswalk,  
Oak Street, both directions at the Old Colony Rail Trail crosswalk,  
Orleans-Harwich Rd, Route 39, both directions at the Old Colony Rail Trail crosswalk, and  
Depot Road, both directions at the Old Colony Rail Trail crosswalk.~~

The YIELD regulation shall be supported with a YIELD HERE TO PEDESTRIANS (R1-5) sign and a YIELD LINE consisting of a row of solid white isosceles triangles pointing toward approaching vehicles extending across approach lanes to indicate the point at which the yield is required to be made in accordance with the standards of the Manual on Uniform Traffic Control Devices, Section 3B-16.

\_\_\_\_\_  
\_\_\_\_\_  
\_\_\_\_\_  
\_\_\_\_\_  
\_\_\_\_\_

HARWICH BOARD OF SELECTMEN

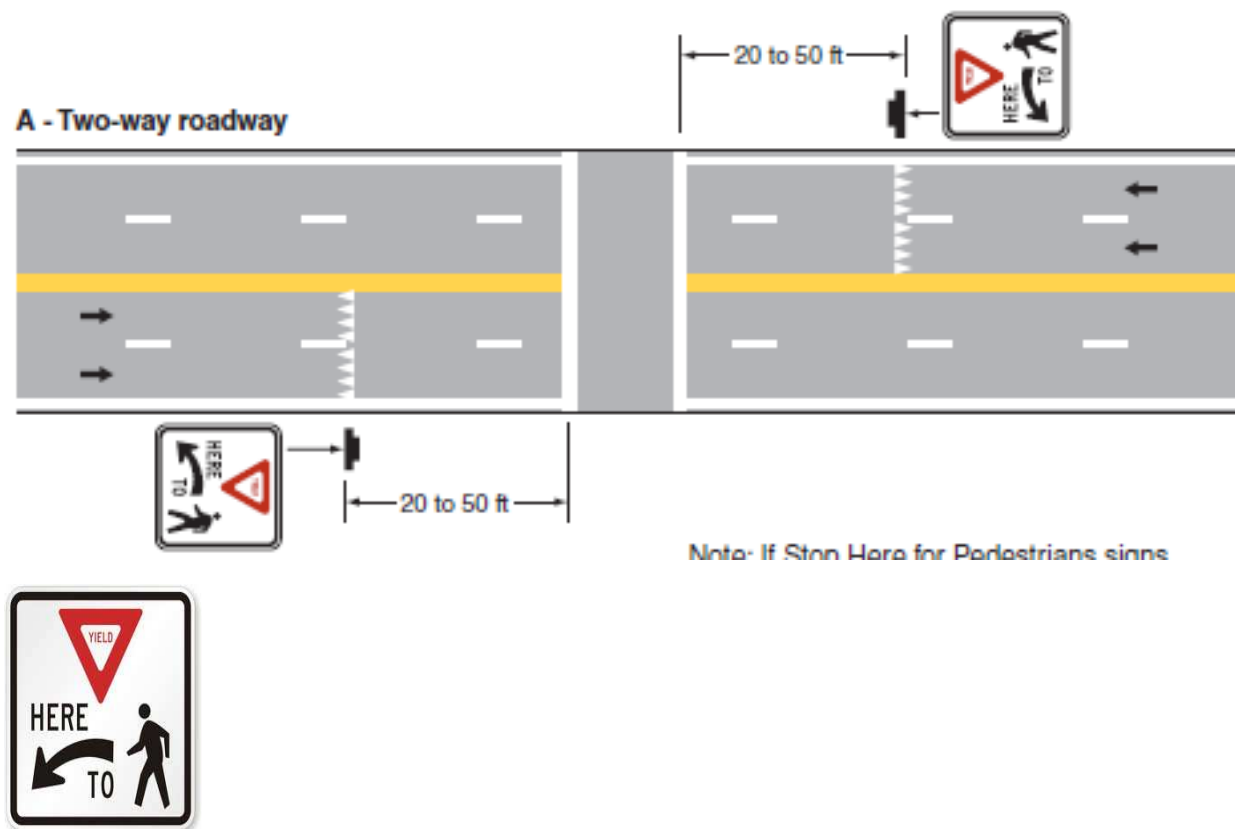
Effective Date of passage \_\_\_\_\_

Printed in the Cape Cod Chronicle on \_\_\_\_\_  
initial

Attest

\_\_\_\_\_  
Town Clerk

Figure 3B-17. Examples of Yield Lines at Unsignalized Midblock Crosswalks



W1-5