

J. Brown Inc
P.O. Box 556
Harwich, MA 02645
508 432 1980

May 15, 2017

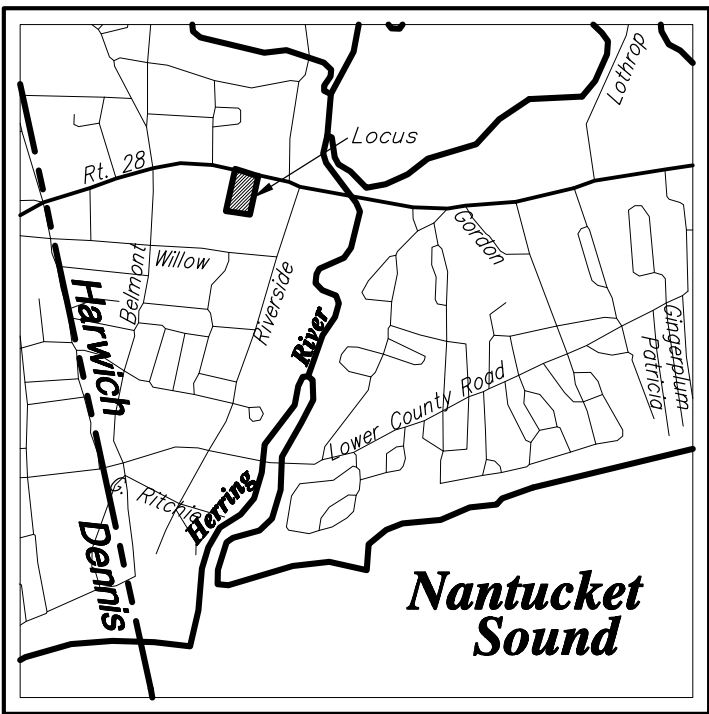
Planting plan for 93 & 97 Main St. West Harwich, MA

Phase 1: Areas marked on plan in front of two (2) existing dwellings at edge of street- remove existing undesirable vegetation, replace with new plantings and mulch. Plants to include Hydrangeas, Ornamental Grasses, and various perennials.

Phase 2: Upon commencement of renovations to two (2) existing dwellings- remove existing undesirable vegetation from foundation beds, replace with new plantings following theme of phase 1.

Phase 3: Planting of foundation beds of six (6) new dwellings.

All eight dwellings to be designed and planted in a theme to best suit the local environment esthetically and functionally.



LOCUS MAP

SCALE 1"=2000'±

ASSESSORS MAP 10 PARCEL W5 & W3-B
LOCUS IS WITHIN FEMA FLOOD ZONE AE (EL 11') & X AS SHOWN ON COMMUNITY PANEL #25001C0611J DATED 7/16/2014

ZONING SUMMARY

ZONING DISTRICT: CH1 / RH1 DISTRICT

MIN. LOT SIZE 40,000 S.F.
MIN. LOT FRONTAGE 150'
MIN. FRONT SETBACK 25'
MIN. SIDE SETBACK 20'
MIN. REAR SETBACK 20'
MAX. BUILDING HEIGHT 30'
(ZONING RELIEF UNDER COMPREHENSIVE PERMIT REQUESTED AS REQUIRED)

OWNER OF RECORD

HARWICH ECUMENICAL COUNCIL
FOR THE HOMELESS INC.
PO BOX 638
WEST HARWICH, MA 02671

REFERENCES

DEED BOOK 21083 PAGE 20
DEED BOOK 21083 PAGE 22

GENERAL PLANTING NOTES

- 1) PLANT MATERIAL WILL BE FROM AN ESTABLISHED REGIONAL NURSERY
- 2) SOIL MATERIAL WILL BE RELOCATED AND RE-USED FROM INITIAL SITE CLEARING
- 3) SHRUB AND PERENNIAL BEDS WILL RECEIVE COMPOST AND MANURE WHEN PLANTING
- 4) HABITAT CONTRACTOR WILL COORDINATE PLANTING INSTALLATION BY VOLUNTEERS WITH WORK BEING DONE BY OTHERS
- 5) ALL PLANTS WILL BE "WATERED IN" FOR THE FIRST TWO GROWING SEASONS, PROVIDING ADEQUATE NATURAL RAIN OF 1" PER WEEK DURING SPRING AND FALL GROWING SEASONS DOES NOT OCCUR
- 6) HOME YARDS AND ROAD SHOULDERS TO BE HYDROSEEDING WITH DROUGHT-TOLERANT FESCUE

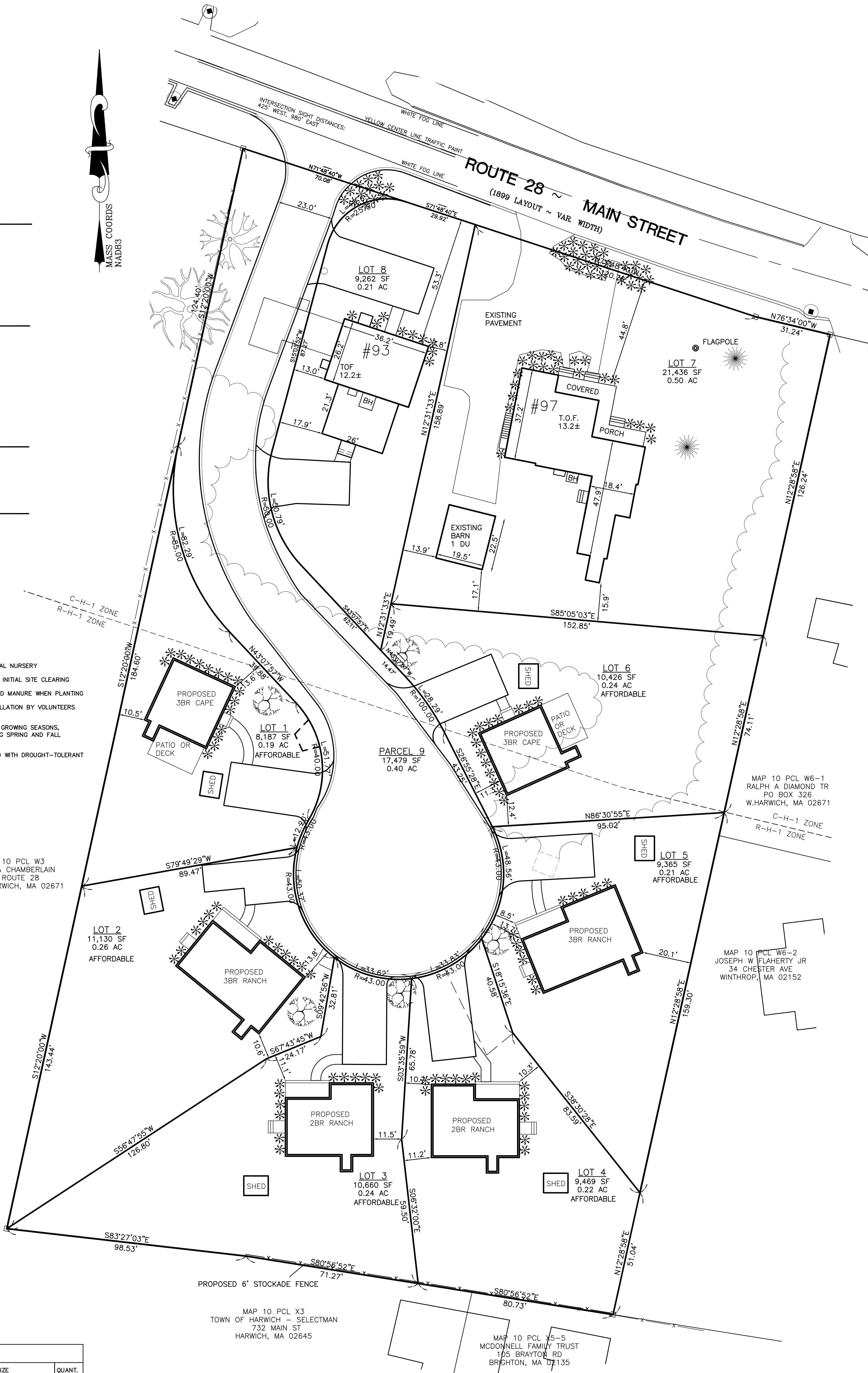
MAP 10 PCL W3
VIRGINIA CHAMBERLAIN
87 ROUTE 28
WEST HARWICH, MA 02671

MAP 10 PCL W6-1
RALPH A DIAMOND TR
PO BOX 326
W.HARWICH, MA 02671

MAP 10 PCL W6-2
JOSEPH W FLAHERTY JR
34 CHESTER AVE
WINTHROP, MA 02152

MAP 10 PCL X5-5
MCDONNELL FAMILY TRUST
105 BRAYTON RD
BRIGHTON, MA 02135

PLANTING SCHEDULE			
SYMBOL	PLANT NAME	SIZE	QUANT.
	TREE Kwansan Cherry <i>Prunus Serrulata "Kwansan"</i>	1.5"-2" cal. B&B	6
	SHRUBS Endless Summer Hydrangea <i>Hydrangea macrophylla</i> Blushing Bride Hydrangea <i>Hydrangea macrophylla</i> Limelight Hydrangea <i>Hydrangea macrophylla</i> Inkberry <i>Ilex glabra</i> Knockout Rose <i>Rosa</i> Ornamental Grass <i>various varieties</i>	#3gal container #3gal container #3gal container #3gal container #3gal container #1-#3gal container	28 12 12 16 22 30
	PERENNIALS Daylilies Shasta Daisy Rudebekia Hostas Aster	#1gal container #1gal container #1gal container #1gal container #1gal container	20 20 20 20 20



LANDSCAPE PLAN

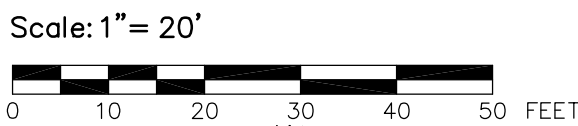
OF

#93 & #97 MAIN STREET
WEST HARWICH, MA

PREPARED FOR

HABITAT FOR HUMANITY INC.

DATE: 6-9-2017



DANIEL A. OJALA, P.L.S.

DATE 6-9-2017

PERMIT SET, NOT FOR CONSTRUCTION

down cape engineering, inc.
civil engineers
land surveyors
939 Main Street (Rte 6A)
YARMOUTHPORT MA 02675
off 508-362-4541
fax 508-362-9880
downcape.com @