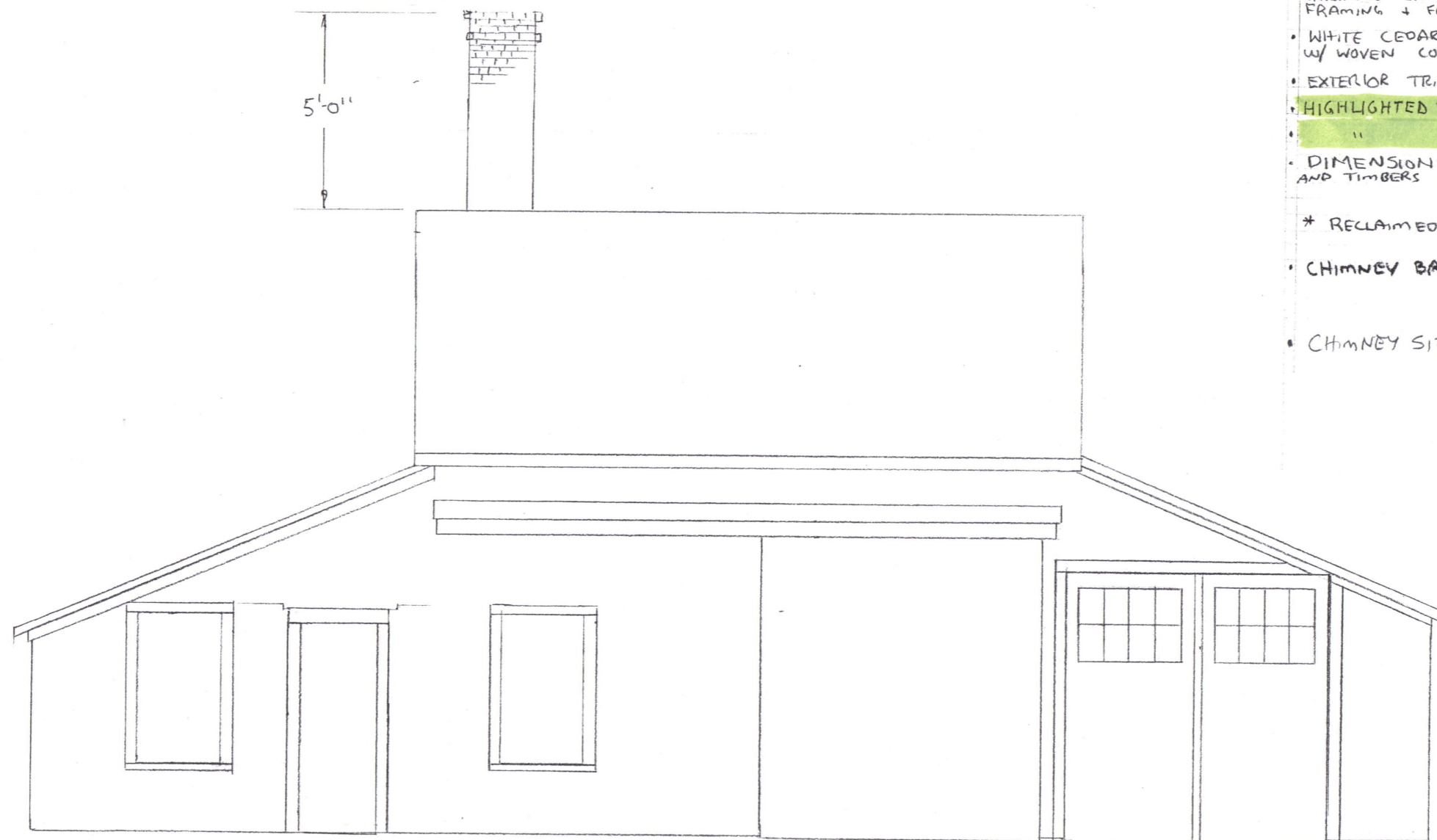


Attachment A

Construction Plans



- ALL MATERIAL BELOW TIE BEAMS TO BE ORIGINAL OR RECLAIMED\* EXCEPT MAW FLOOR FRAMING + FNDTN, ROUGH SAWN NEW ABOVE TIES
- WHITE CEDAR SIDING COARSES ARE 5 1/2" +/- W/ WOVEN CORNERS
- EXTERIOR TRIM, FULL 1" THICK, WHITE, PINE.
- HIGHLIGHTED COMPONENTS HAVE BEEN FOUND
- " WALL SECTIONS HAVE BEEN FOUND
- DIMENSIONS OF PRE-EXISTING WALL SECTIONS AND TIMBERS OVERRIDE DIMENSIONS ON DRAWINGS.

\* RECLAIMED FROM SIMILAR BUILDINGS

- CHIMNEY BRICK: INSIDE ORIGINAL  
EXTERIOR: ROBINSON, FULL SIZE, TUMBLED, ENGLISH PUB STYLE.
- CHIMNEY SIZE: MINIMUM FOR 6" FLU  
ORIGINAL 16" x 16"  
FLU TO OPEN IN CELLAR  
FAKE THIMBLE FOR  
POT BELLY STOVE.

## CROWELL BARN

SCALE: 1/4" = 1 FOOT

APPROVED BY:

DRAWN BY IAN  
ELLISON

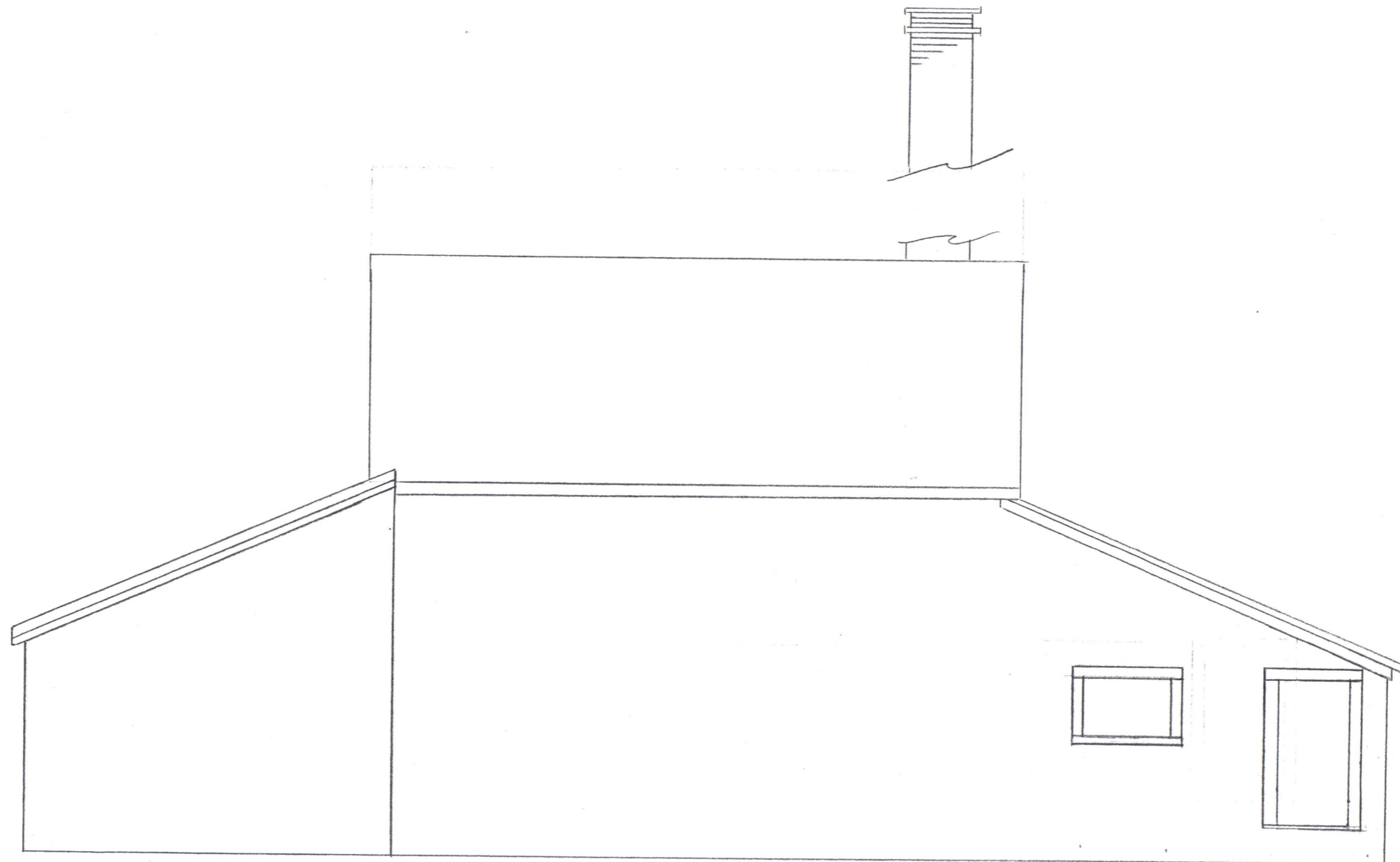
DATE: JAN. 2013

REVISED 6/17/13

FRONT VIEW

DRAWING NUMBER

1



# CROWELL BARN

SCALE:  $\frac{1}{4}$ " = 1 FOOT

APPROVED BY:

DATE: JAN 2013

DRAWN BY IAN ELLISON

REVISED 6/17/13

REAR VIEW

DRAWING NUMBER

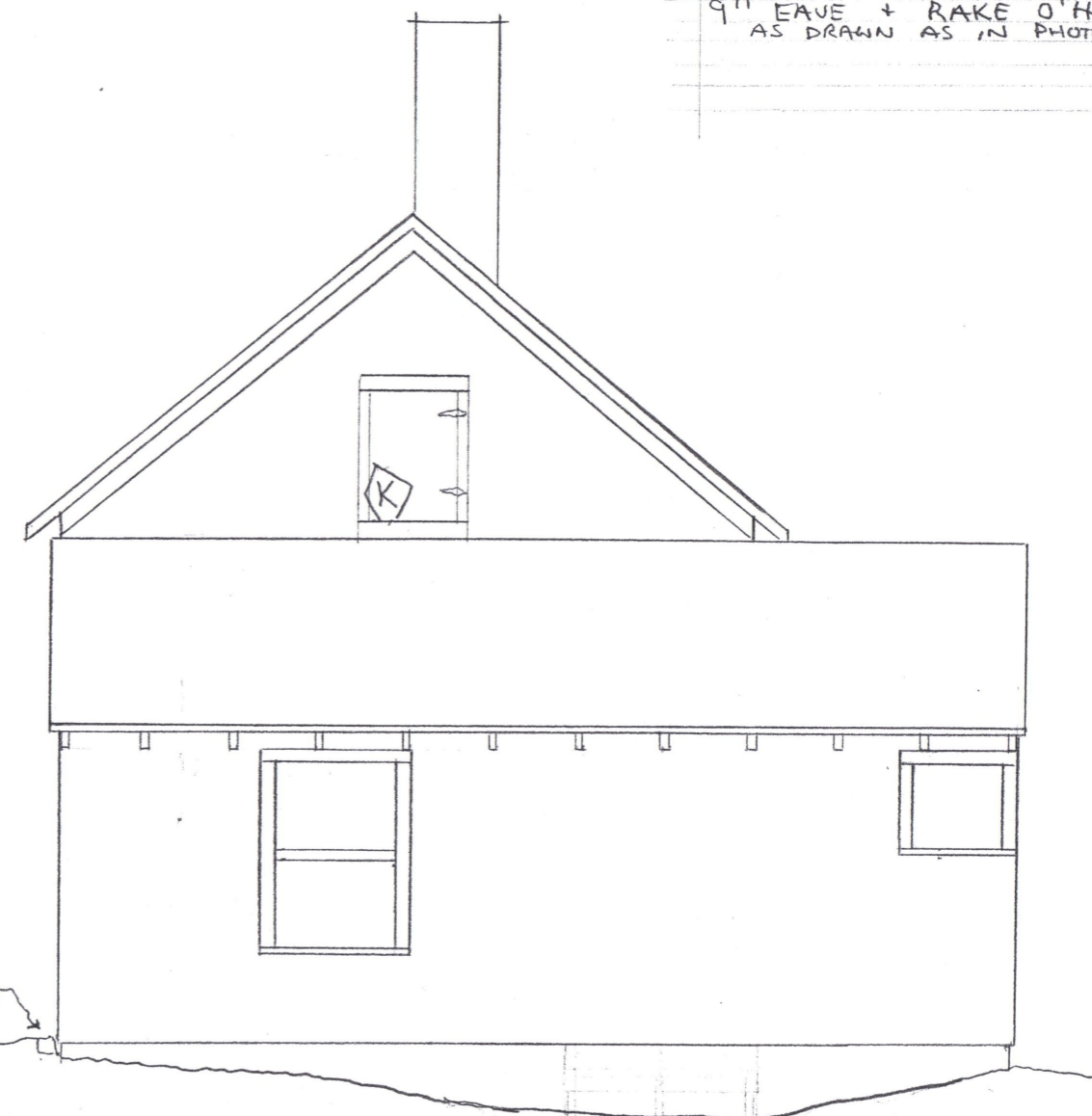
2

WOODEN SHEDDING BARN  
9" EAVE + RAKE O'HANGS  
AS DRAWN AS IN PHOTOS



LEFT (1)

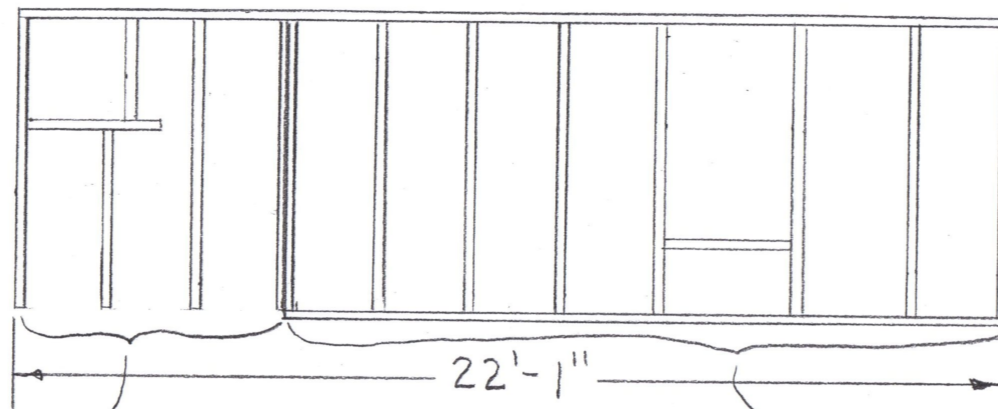
ADD  
GRANITE BLOCK-  
@ DOORS  
(OR OTHER)  
TO KEEP  
DIRT AWAY  
FROM WOOD



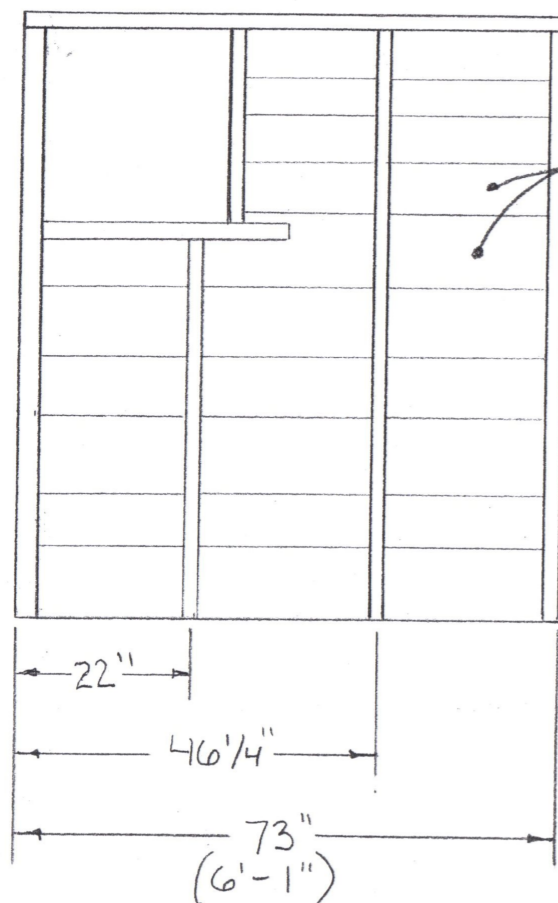
RIGHT (5)

CROWELL BARN		
SCALE: 1/4" = 1 FOOT	APPROVED BY:	DRAWN BY IAN ELLISON
DATE: JAN 2013		REVISED 6/17/13
SIDE ELEVATIONS		
		DRAWING NUMBER 344

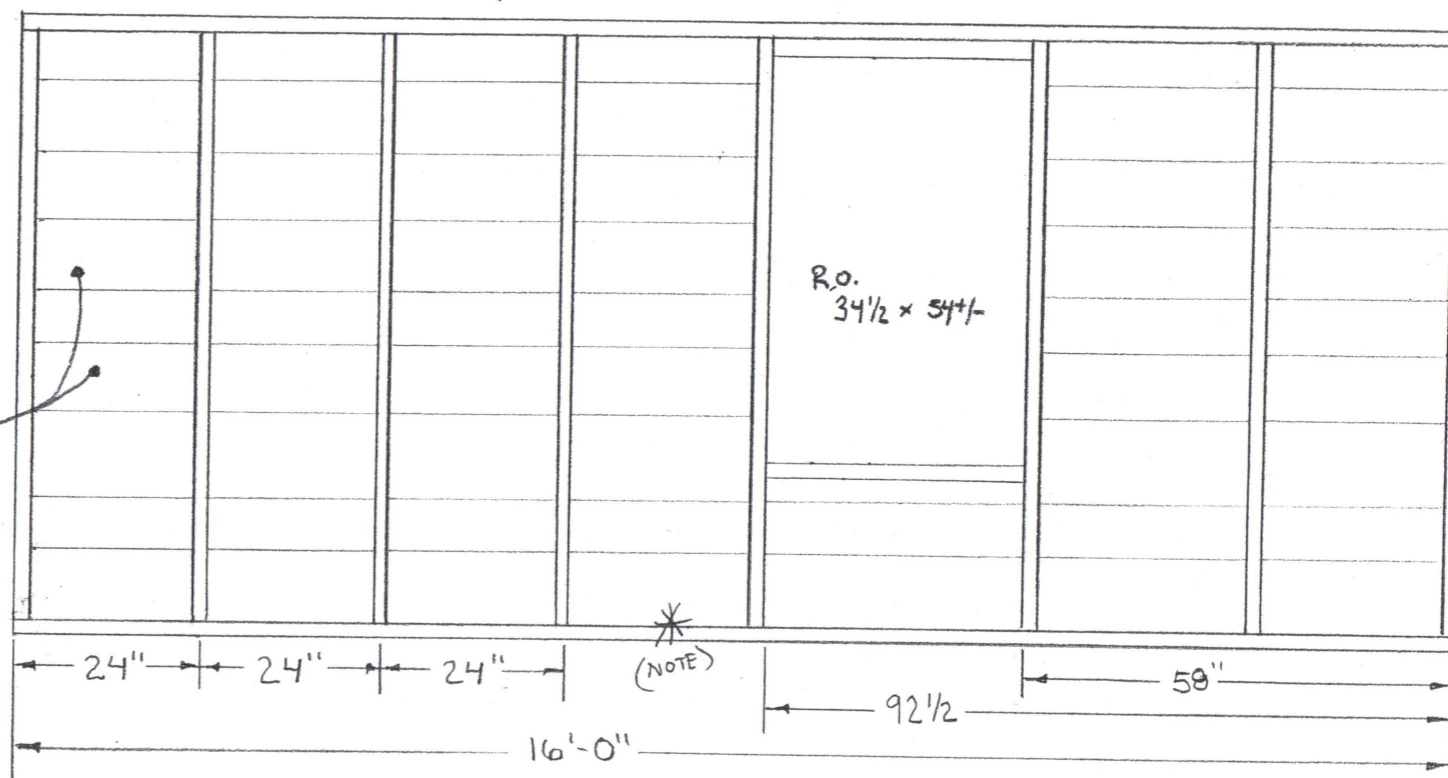
# WHOLE WALL (1/4" = 1 FOOT)



## SECTION R-B (1/2" = 1 FOOT)



## SECTION R-A (1/2" = 1 FOOT)



1x7, 1x9, 1x11 etc.  
BOARDS, SQUARE EDGE  
CUT NAILS

WALL 5

## CROWELL BARN

SCALE: AS SHOWN

APPROVED BY:

DRAWN BY IAN

DATE: FEB 20 2013

REVISED 6/17/13

RIGHT SHED EAVE WALL SECTIONS  
AS FOUND \*(NO SILL WAS FOUND)\*

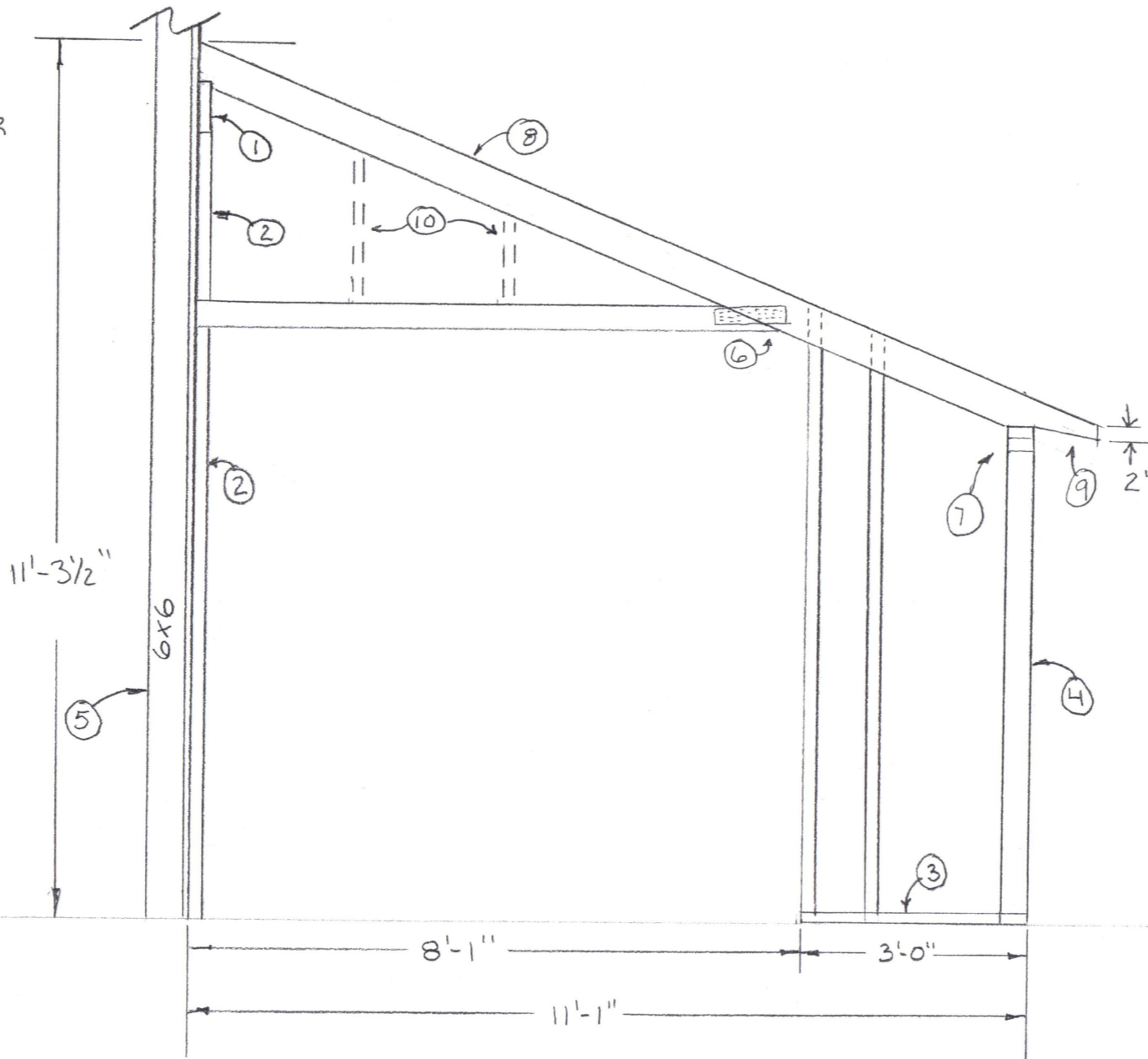
VIEWED FROM INSIDE

DRAWING NUMBER

P-4 5

## NOTES

- 1 2x8 SECURED W/ 6" TIMBER LAGS
- 2 2x4'S ON FLAT, 36" O.C. 1/2"
- 3 ADD 2x4 BOT. PLATE, CUT STUDS ACCORDINGLY
- 4 WALL 5, ADD 2<sup>ND</sup> TOP PLATE  
ADD BOT. PLATE, AFTER CUTTING 4" OFF STUDS
- 5 PART OF MAIN BARN
- ALL ADDED WOOD IS RECLAIMED  
SECURE WITH CUT NAILS
- 6 ADD TRUSS PLATE TO OUTSIDE OF FRAME
- 7 GLUE 3/4 TIMBER LAG (FROM ABOVE)  
DOUBLE TOP PLATE TOGETHER  
OVER WINDOW OPENINGS.
- 8 2x6 RAFTERS 2' O.C. W/ TIE-DOWNS  
APPLIED TO OUTSIDE OF TOP PLATE.
- 9 TAPER SHEDS' RAFTER TAILS  
TO 2"
- 10 ADD STUDS ABOVE HDR



CROWELL BARN

SCALE:  $\frac{1}{2}'' = 1 \text{ FOOT}$

**APPROVED BY :**

DRAWN BY I. ELLISON

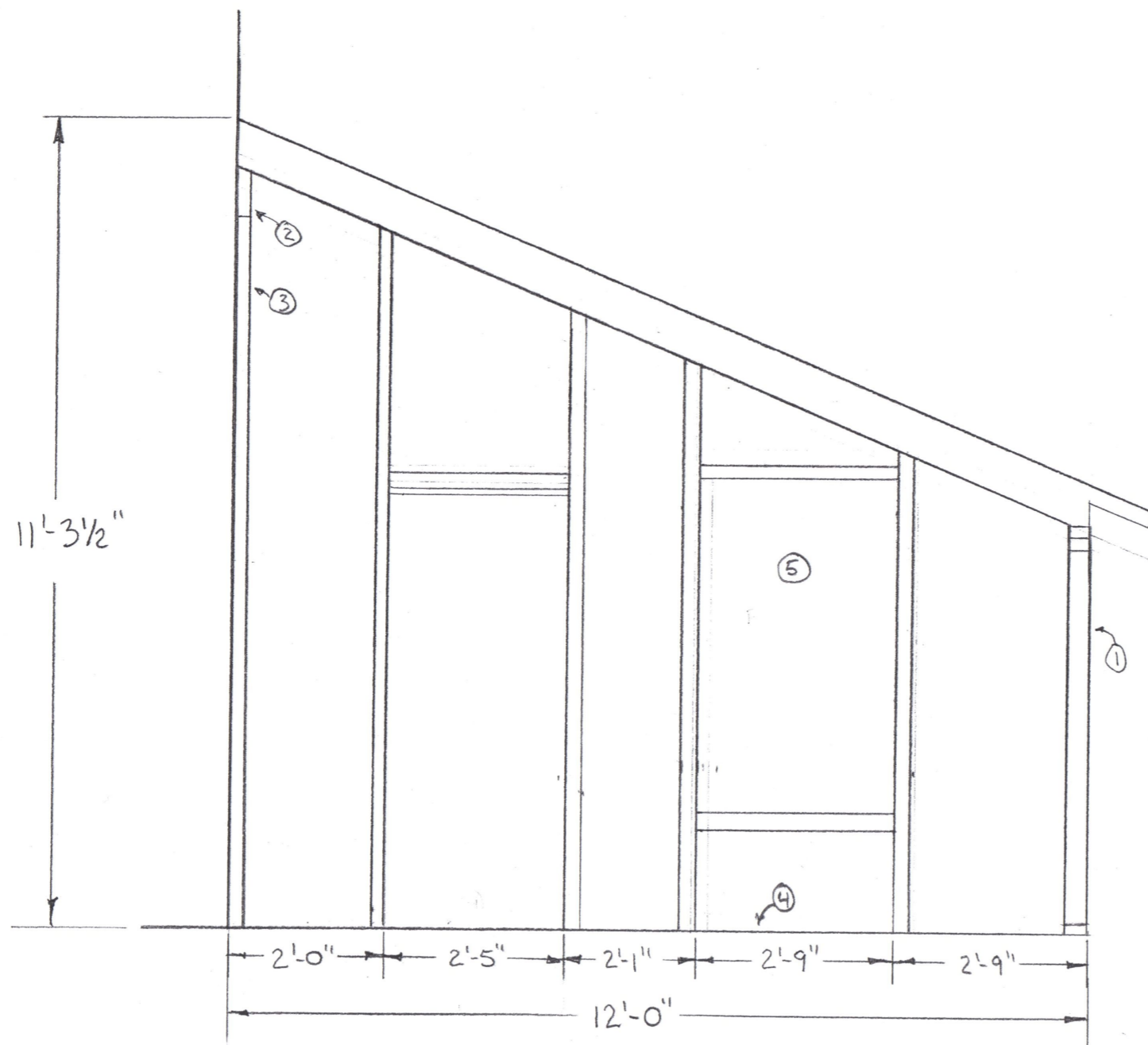
DATE: FEB 2013

REVISED 6/17/13

WALL A, 4-5 (FRONT RIGHT)  
FRAMING, AS FOUND

DRAWING NUMBER

60



# NOTES

1. WALL ①, CUT 4" OFF BOTTOM OF STUDS, ADD A SECOND TOP PLATE AND A BOTTOM PLATE
2. 2x8 SECURED W/ 6" TIMBER LAGS
3. 2x4'S ON FLAT 36" O.C. +/-
4. SILL TO BE ADDED
5. WINDOW HEADER 3 1/2" ABOVE DOOR HDR. R.O. 30" x 4'-6"

## CROWELL BARN

SCALE: 1/2" = 1 FOOT

APPROVED BY:

DRAWN BY TAN ELLISON

DATE: FEB 2013

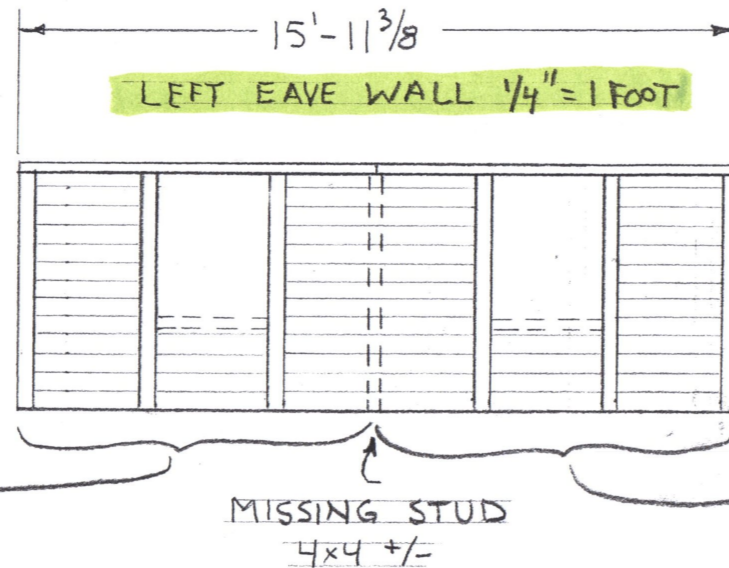
REVISED 6/17/13

WALL A 1-2 (FRONT LEFT)  
VIEWED FROM INSIDE

DIMENSIONS TO BE VERIFIED IN THE FIELD

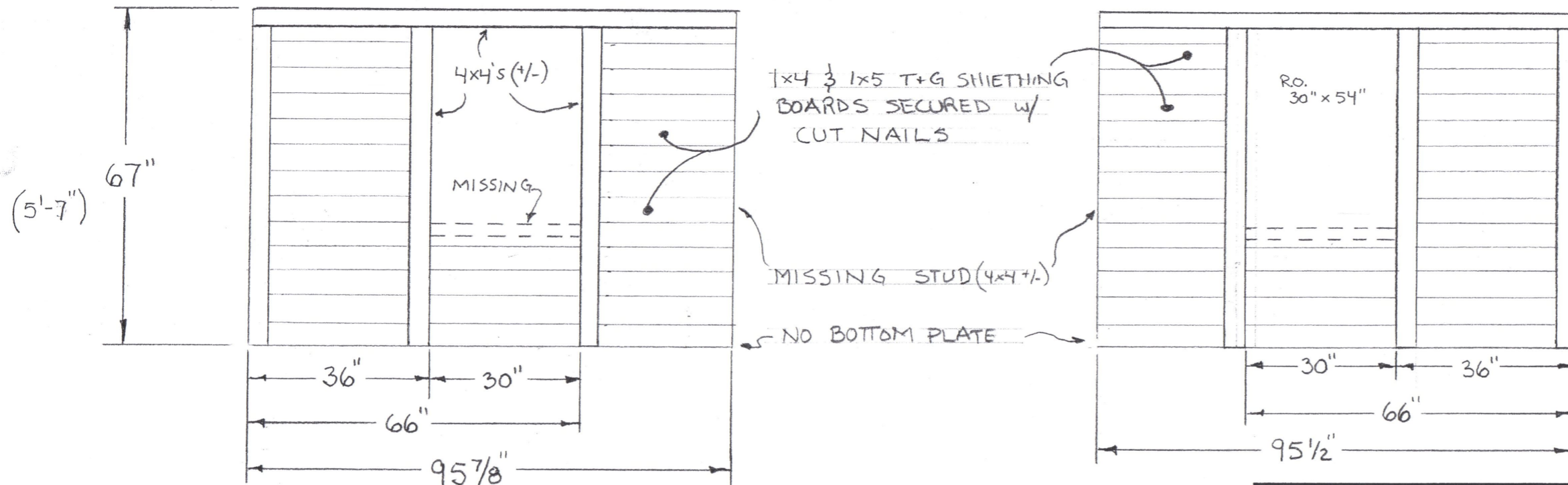
DRAWING NUMBER

7



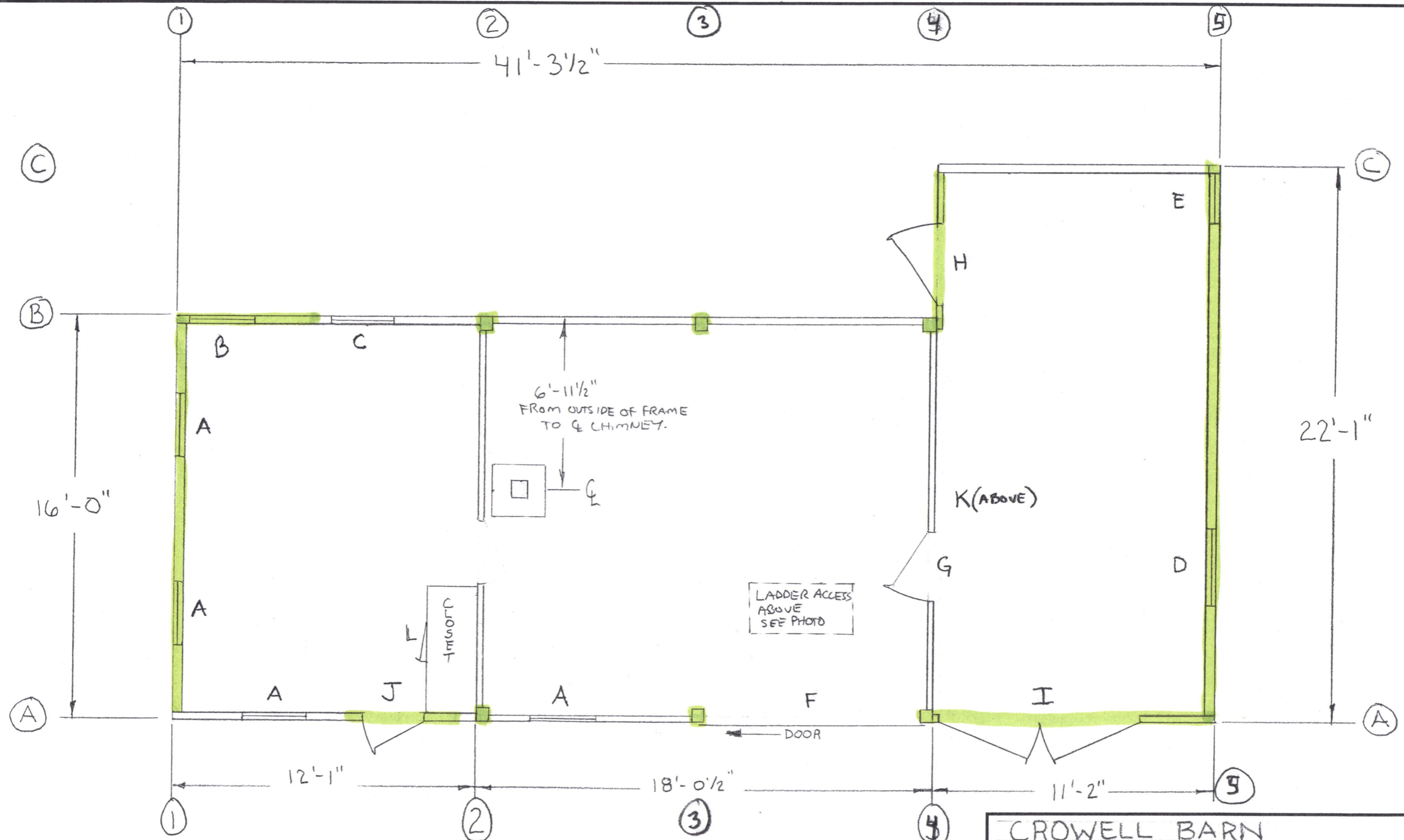
SECTION L-A  
1/2" = 1 FOOT

SECTION L-B  
1/2" = 1 FOOT



WALL 1

CROWELL BARN		
SCALE: 1/2" = 1 FOOT	APPROVED BY:	DRAWN BY IAN
DATE: 1/10/13		REVISED 6/7/13
LEFT SHED - EAVE WALL SECTIONS PRE-EXISTING (DRAWN W/ NEWER FRAMING REMOVED)		
VIEWED FROM INSIDE		DRAWING NUMBER (P-3) 8



# CROWELL BARN

SCALE: 1/4" = 1 FOOT

APPROVED BY:

DRAWN BY: IAN ELLISON

DATE: FEB 2013

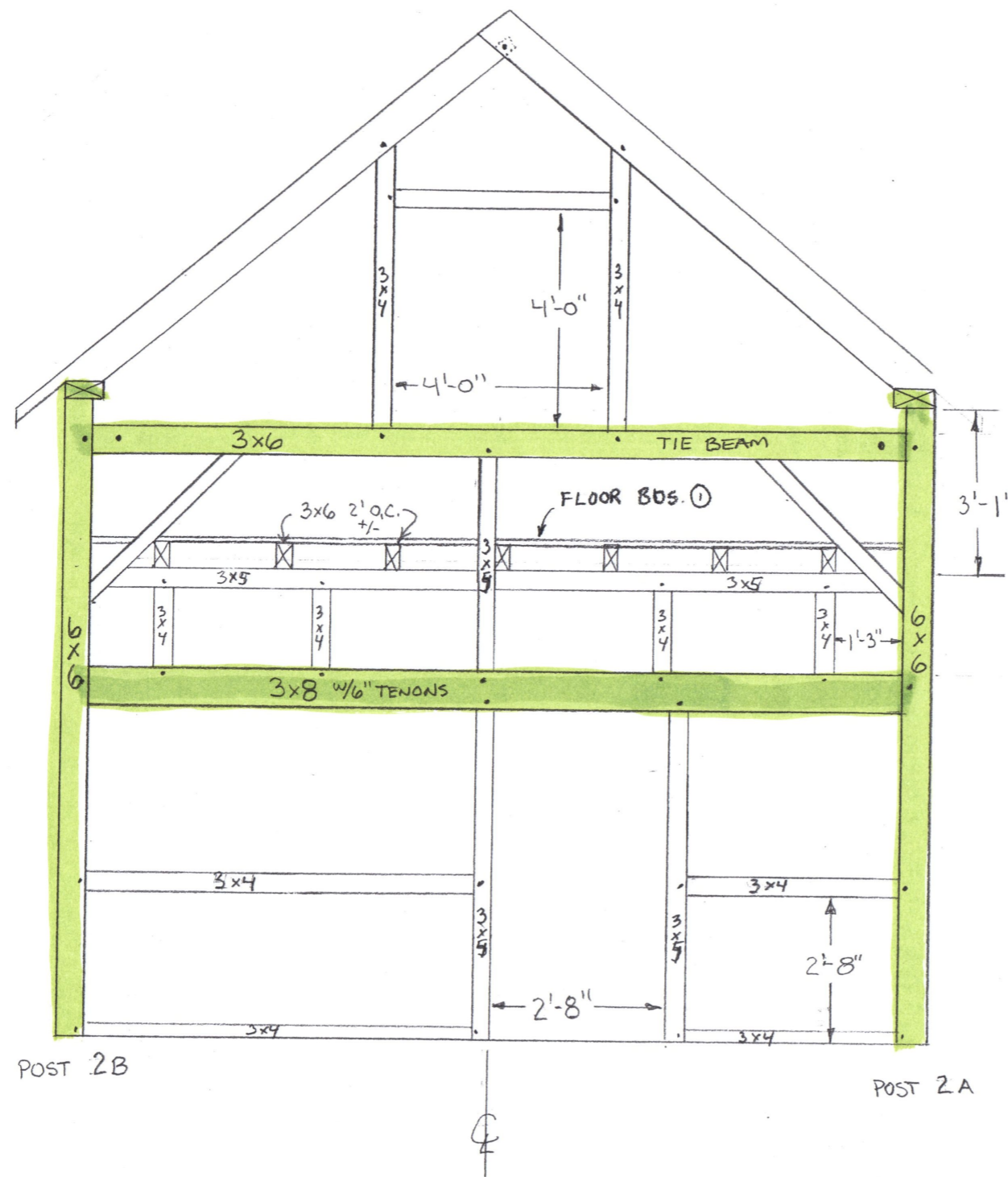
REVISED 6/17/13

PLAN VIEW INSULATION NOT SHOWN, FRAMING ONLY

WINDOW + DOOR SCHEDULE PAGE 19

DRAWING NUMBER

9



- USE 12" TIMBERLINK CONNECTOR @ TIE/POST
- NEW TIMBERS ABOVE TIE EXCEPT PLATES
- RECLAIMED OR ORIGINAL TIMBERS BELOW TIE
- MORTICE + TENON CONNECTIONS ON ALL POSTS, BEAMS + RAFTERS.
- SEE DETAIL PAGE 18
- USE TRUSS PLATES ON ALL BRACES ATTACH TO OUTER FACE ONLY.
- BOARDS ON WHOLE EXTERIOR OF TIMBERFRAMED BARN; WALL I, III, A + B. BOARDS ABOVE TIE MAY BE NEW.

① • **BOARDS: OLD 1x BDS ON 3x6 JOISTS**  
3/4 T+G PLYWOOD ON TOP.

- 4 OF THE SIX POST BOTTOMS NEED REPLACEMENT. OLD 6x6 STOCK TO BE USED, ATTACHED W/ 24" SCARVES PINNED AND EPOXIED, W/ UNDER-SQUINTEAD ADJUSTMENTS

ANY RECLAIMED MAT'L TO BE FROM SIMILAR STRUCTURES

- ALL PEGS MADE BY HAND, RIVEN NOT TURNED, BY TREES ON SITE.  
HARDWOOD

## CROWELL BARN

SCALE: 3/8" = 1 FT

APPROVED BY:

DRAWN BY IAN ELLISON

DATE: FEB 2013

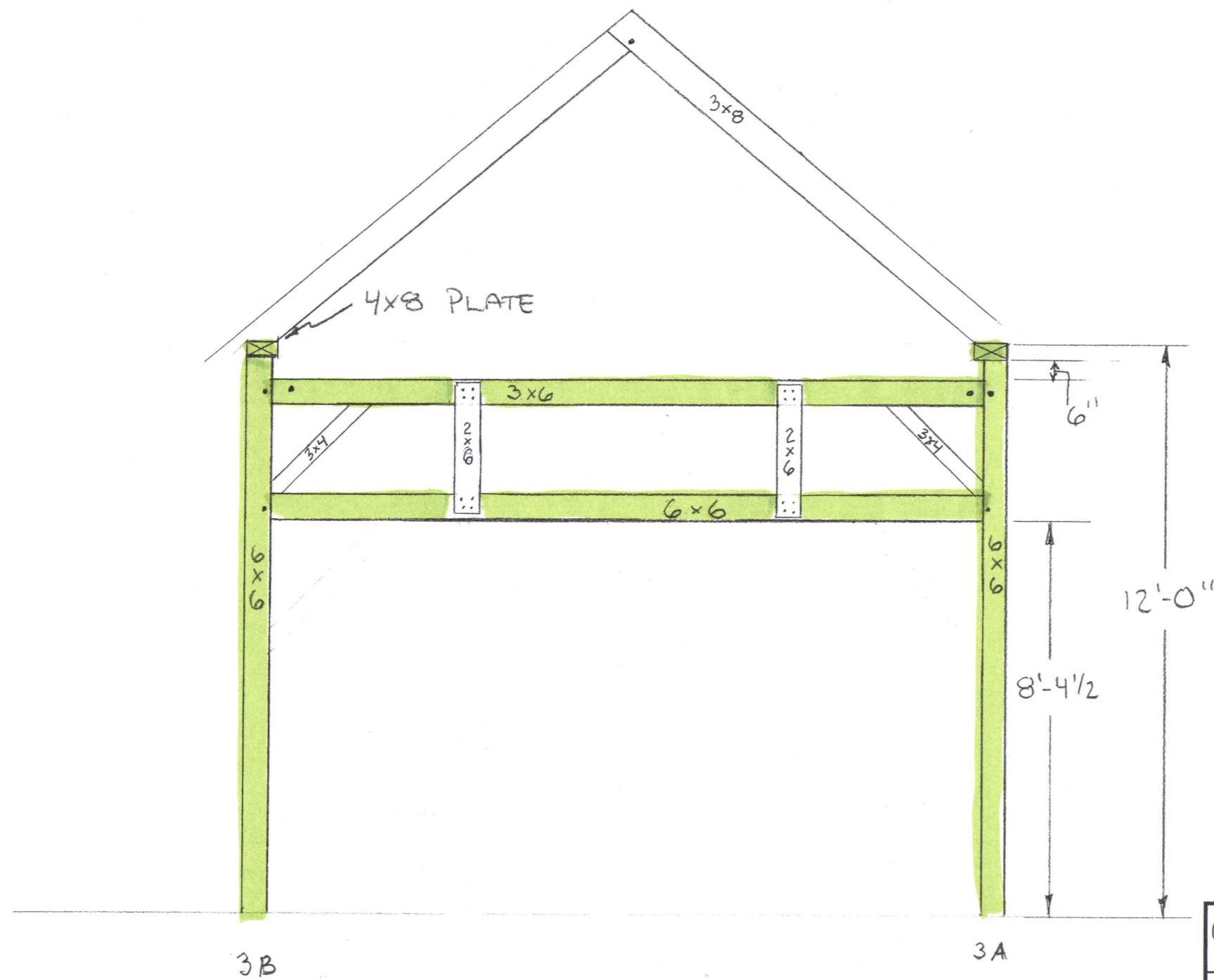
REVISED 6/17/13

TIMBERFRAMED SECTION

WALL 2

DRAWING NUMBER

10



- 12" TIMBERLINK @ TIE/POST CONNECTION
- 2x6'S IN TRUSS SECURED W/ CUT NAILS IN PRE-EXISTING LOCATIONS

CROWELL BARN

SCALE: 3/8" = 1 FT

APPROVED BY:

DRAWN BY: IAN ELLISON

DATE: 2/20/13

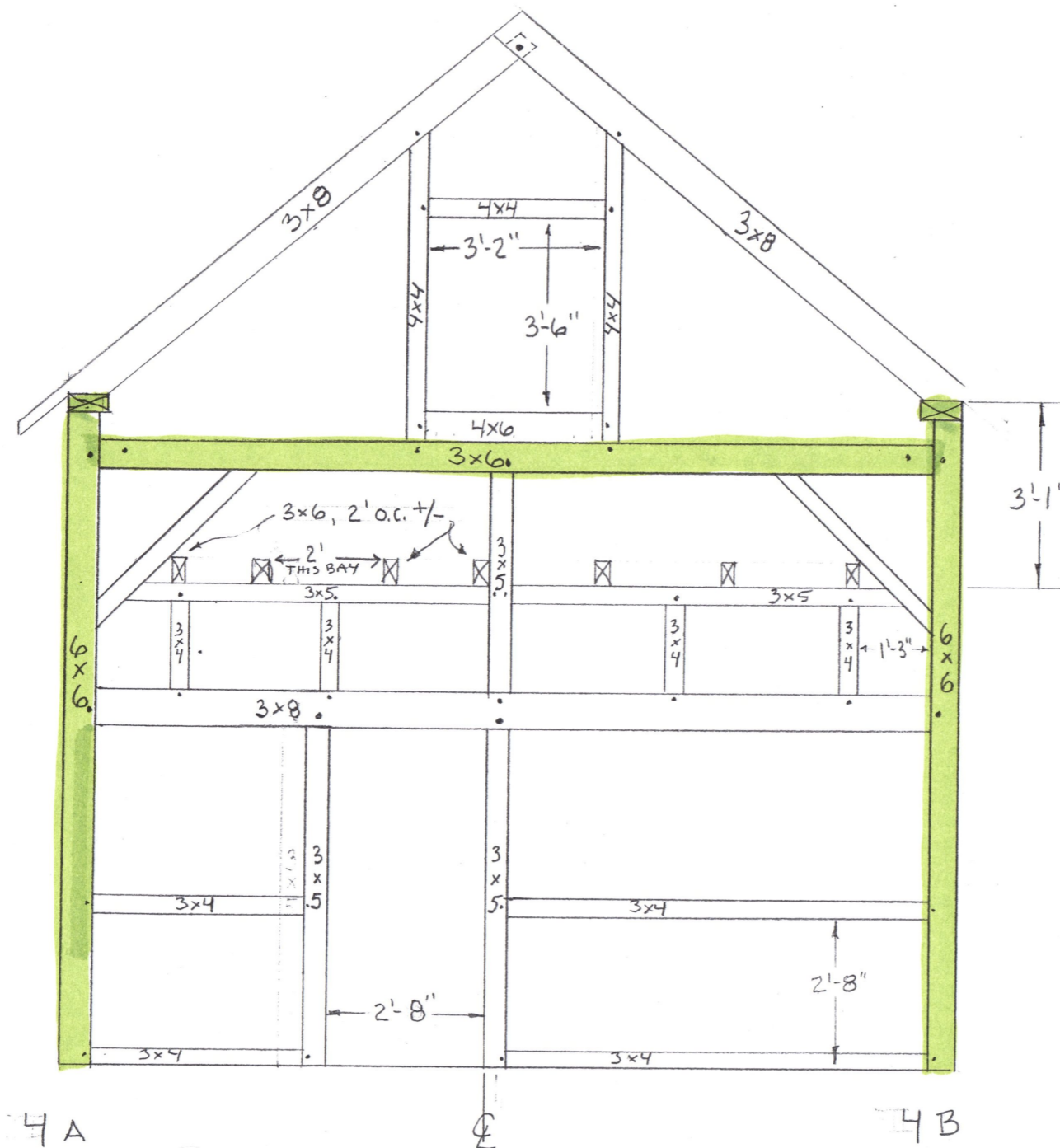
REVISED 6/17/13

TIMBERFRAMED SECTION

WALL 3.

DRAWING NUMBER

111



# CROWELL BARN

SCALE:  $\frac{3}{8} = 1 \text{ FT}$

APPROVED BY:

DRAWN BY IAN ELLISON

DATE: FEB 2013

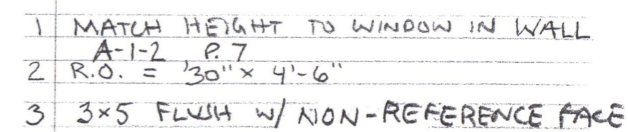
REVISED 6/17/13

TIMBERFRAMED SECTION

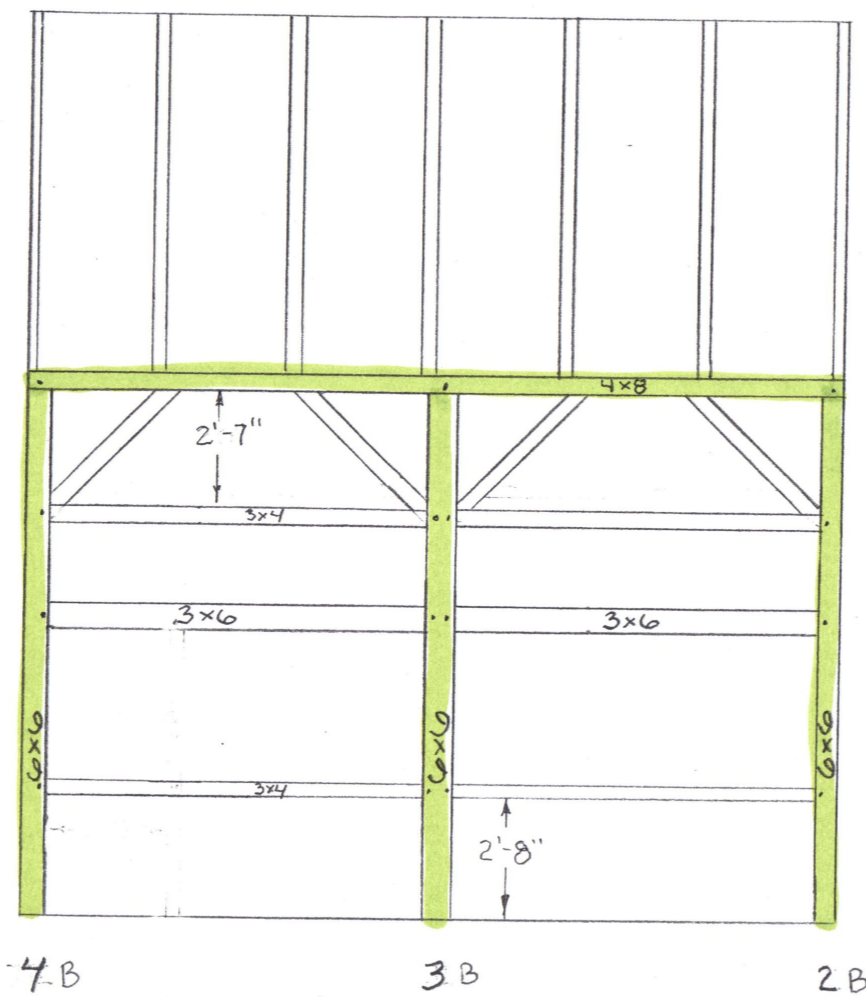
WALL 4

DRAWING NUMBER

12



CROWELL BARN			
SCALE: 1/4" = 1 Foot	APPROVED BY:		DRAWN BY: IAN ELLISON
DATE: 2/22/13			REVISED 6/7/13
TIMBERFRAMED SECTION			
FRONT WALL (WALL A)			DRAWING NUMBER 13



REAR (B)

CROWELL BARN

SCALE: 1/4" = 1 FOOT

APPROVED BY:

DRAWN BY IAN ELLISON

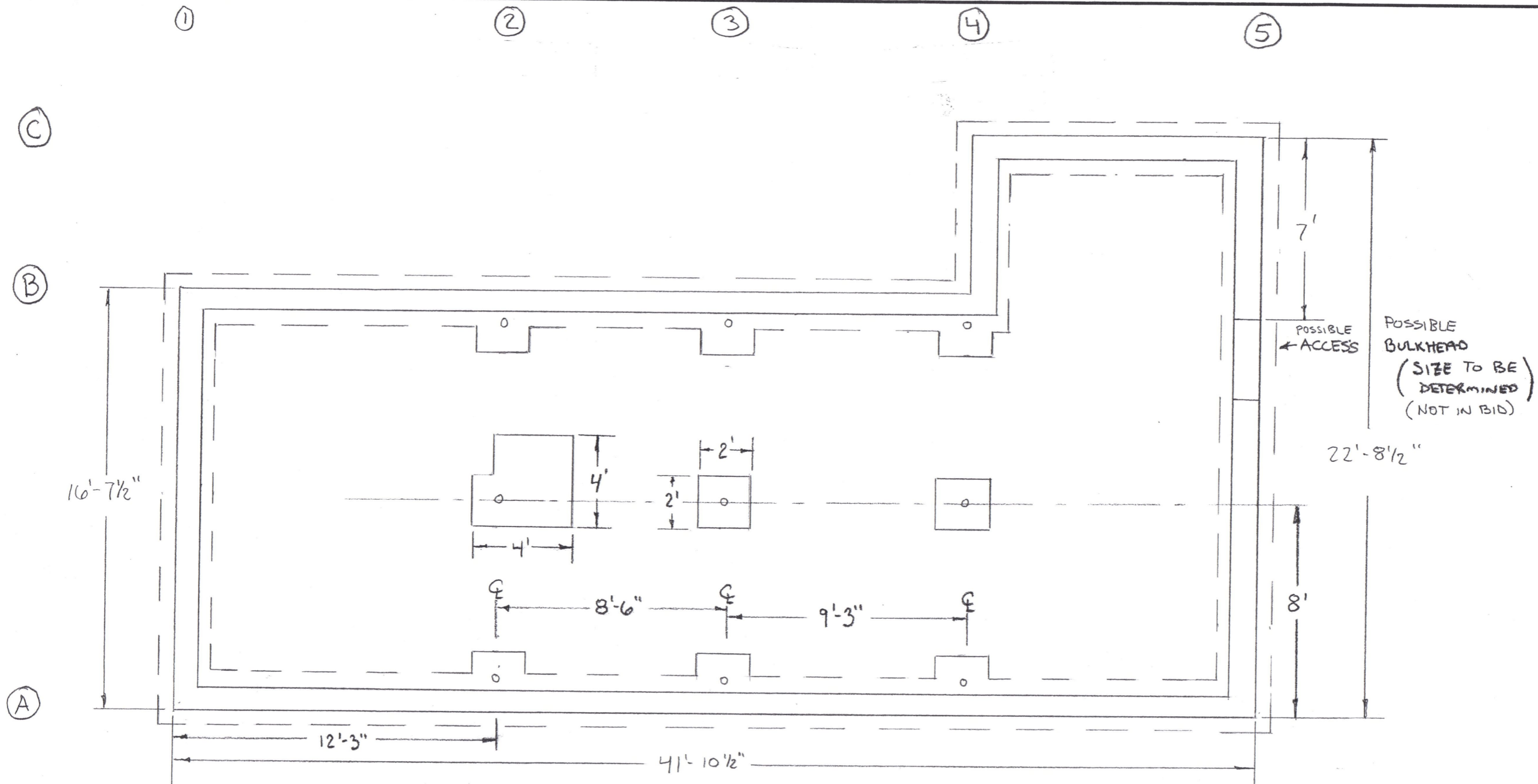
DATE: 2/23/13

REVISED 6/17/13

REAR TIMBER FRAMED WALL  
(WALL B)

DRAWING NUMBER

14



WALL THICKNESSES:

↔ (A, B & C) = 10 INCHES

↑ (1, 4 & 5) = 10 INCHES

CROWELL BARN

SCALE: 1/4" = 1 FOOT

APPROVED BY:

DRAWN BY IAN ELLISON

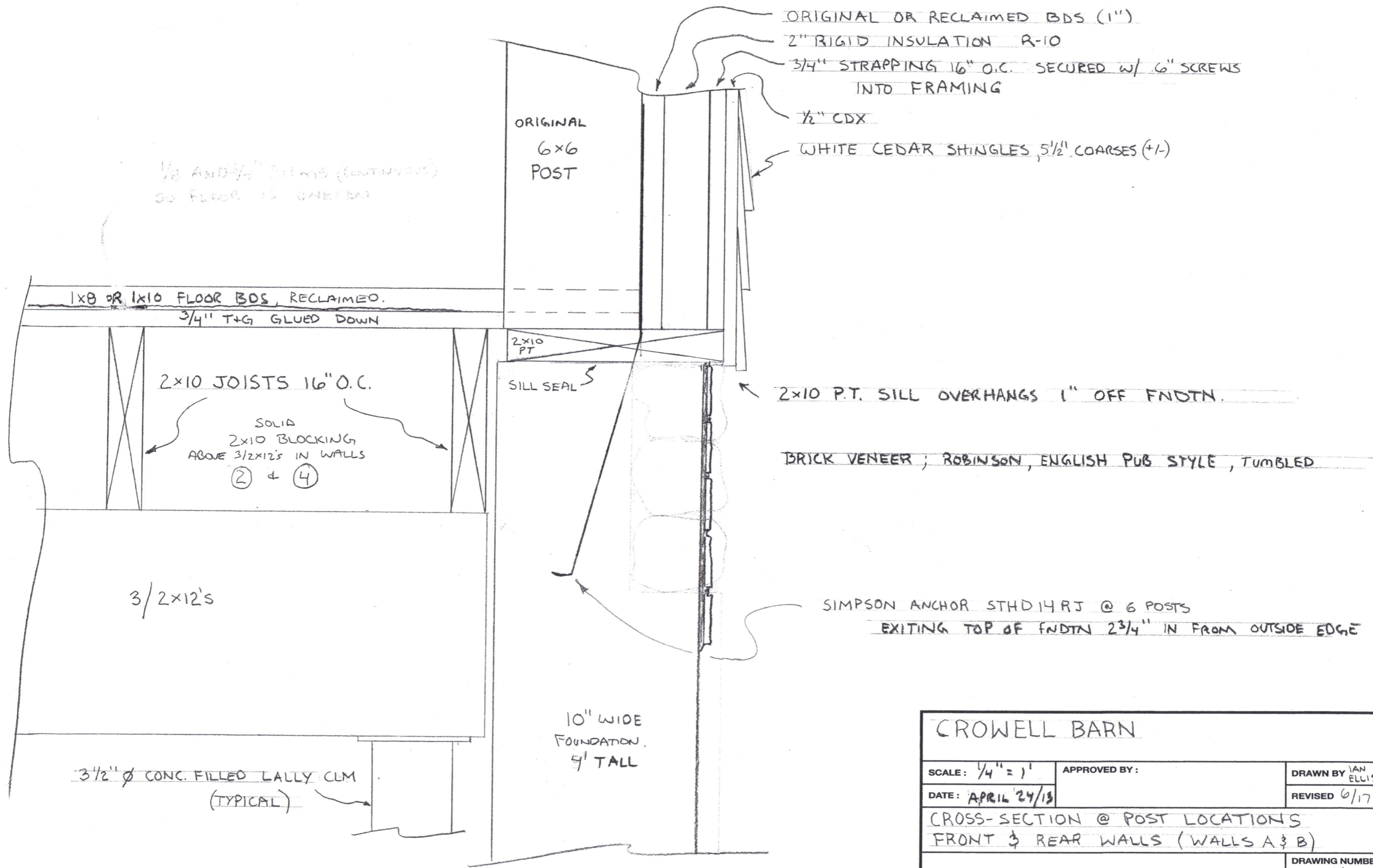
DATE: APRIL 25 2013

REVISED 6/17/13

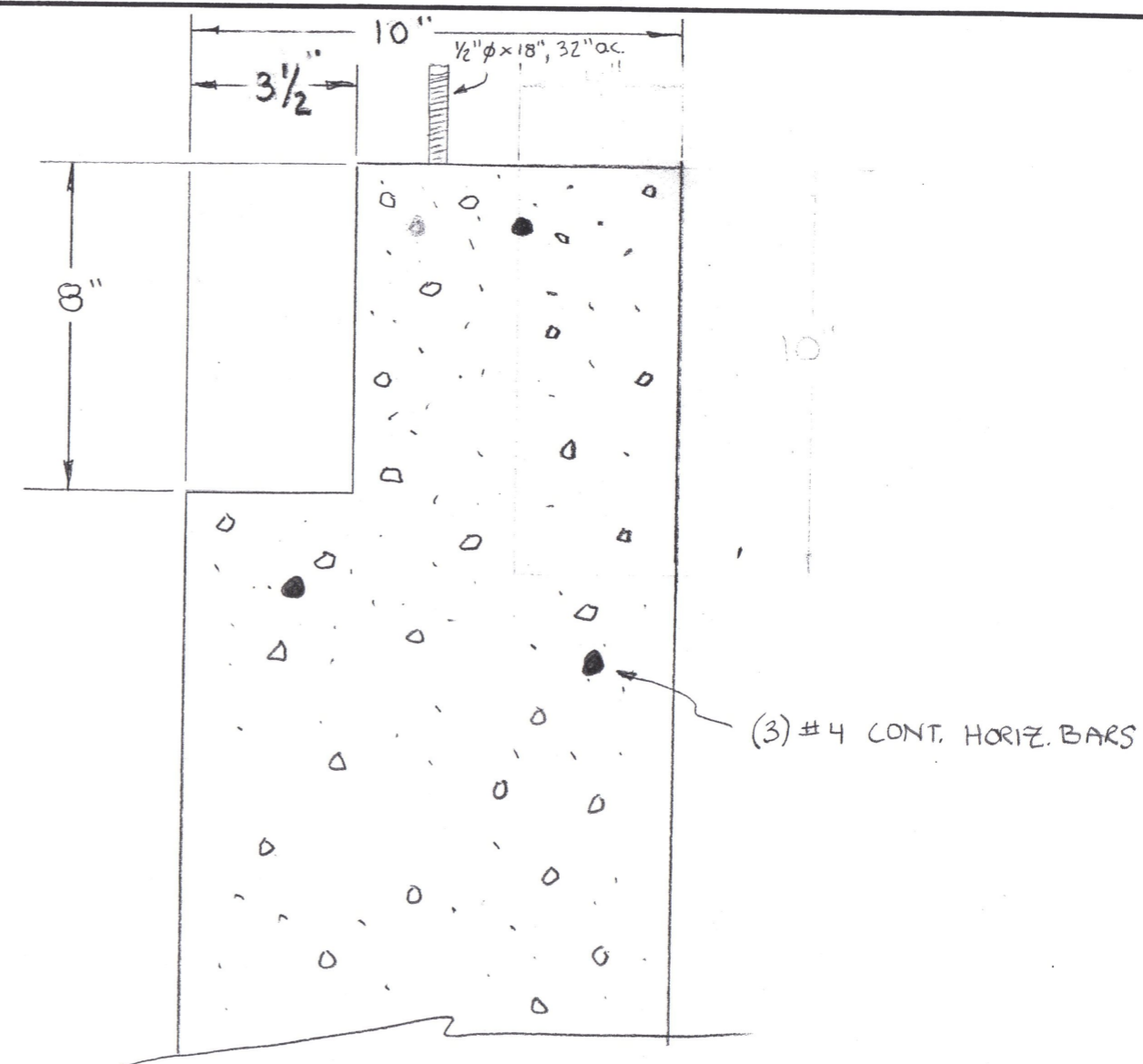
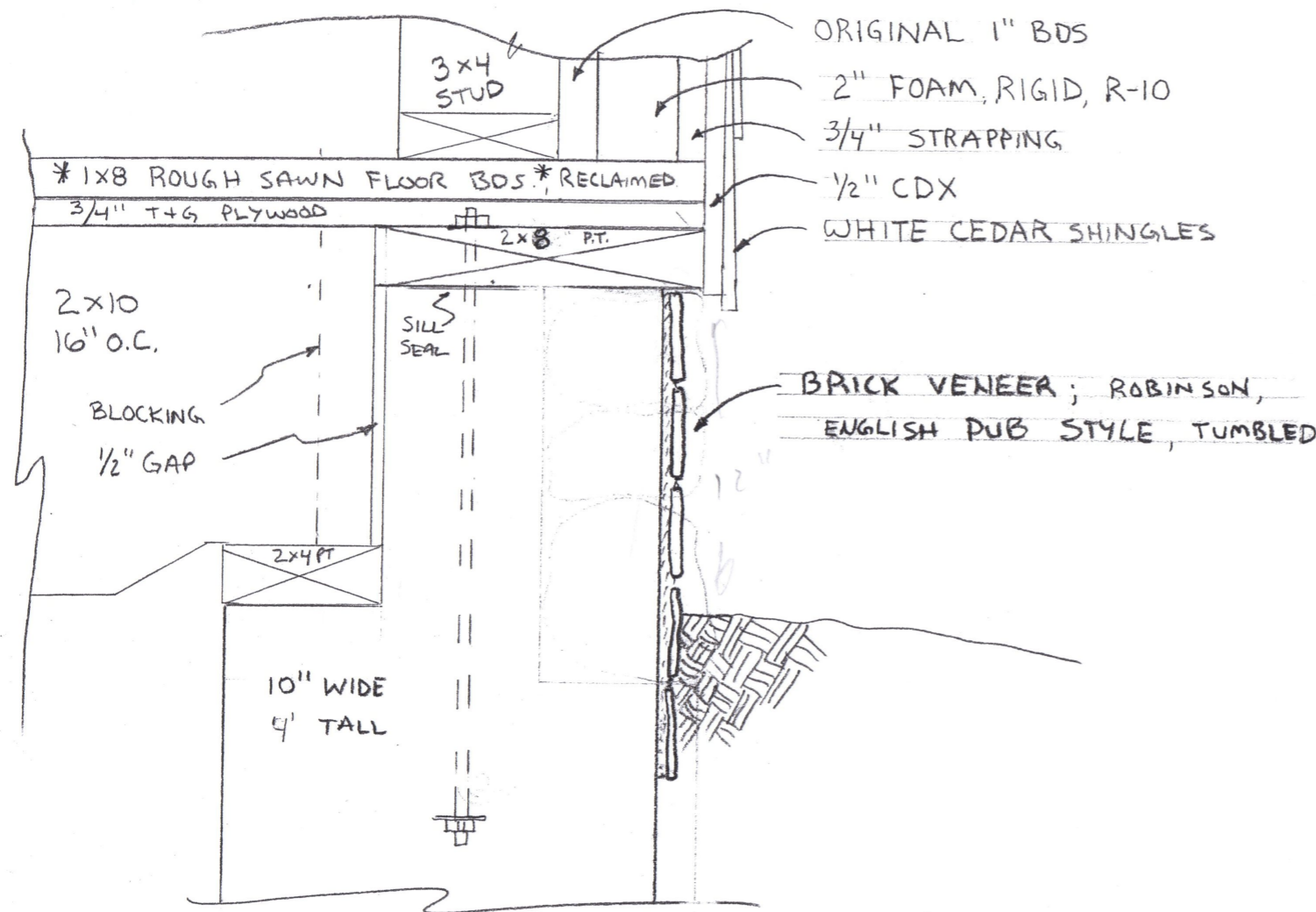
FOUNDATION PLAN

DRAWING NUMBER

15

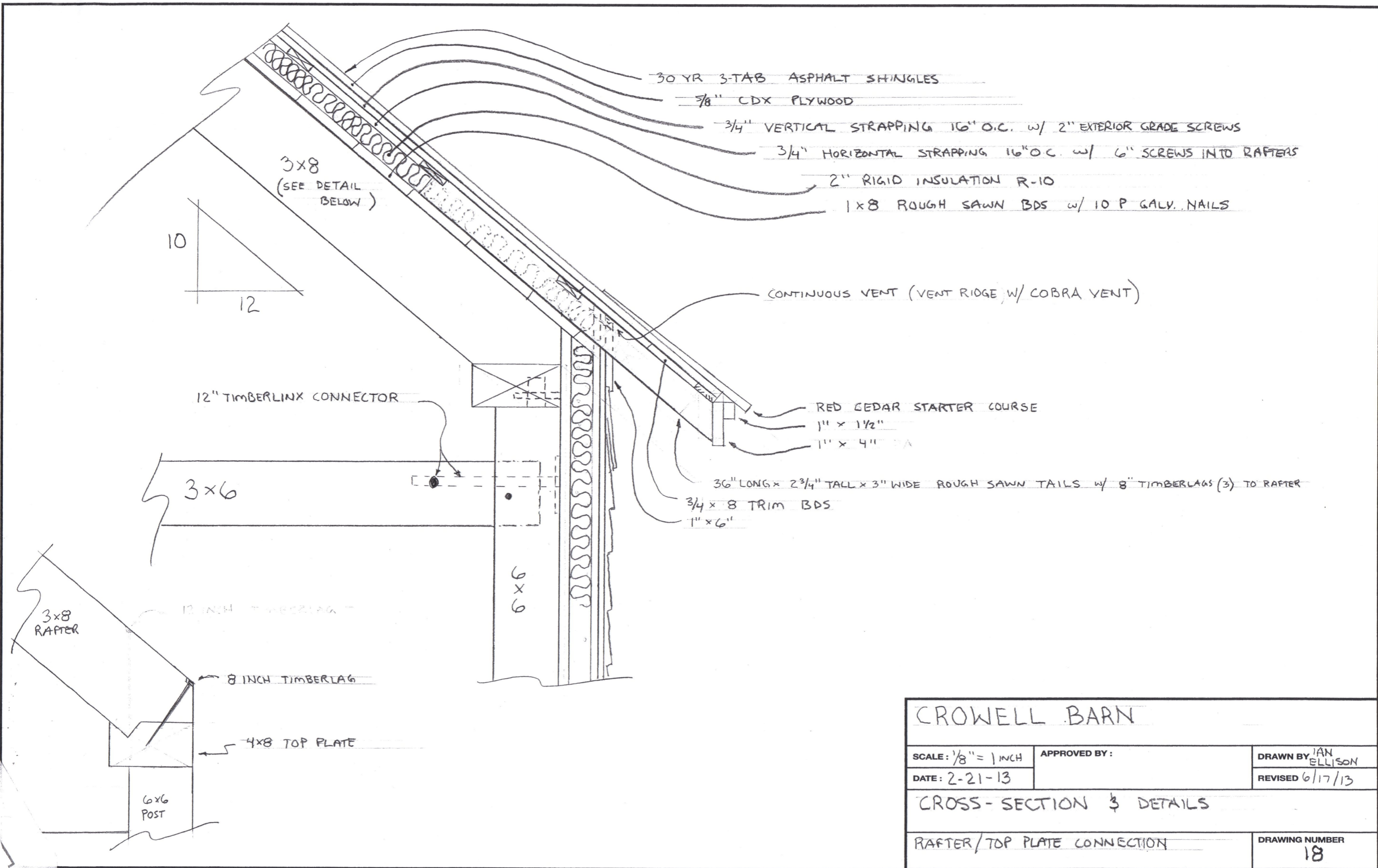


CROWELL BARN		
SCALE: 1/4" = 1'	APPROVED BY:	DRAWN BY IAN ELLISON
DATE: APRIL 24/13		REVISED 6/17/13
CROSS-SECTION @ POST LOCATIONS FRONT & REAR WALLS (WALLS A & B)		
		DRAWING NUMBER 16



\* ADD 1/8" - 1/4" CONT. STIMS ON PLYWOOD ABOVE 2x10 JOISTS TO MAKE WOODEN WORKSHOP FLOOR UNEVEN.

CROWELL BARN		
SCALE: 1/4" = 1 INCH	APPROVED BY:	DRAWN BY IAN ELLISON
DATE: APRIL 24 2013		REVISED 6/17/13
FOUNDATION DETAIL WALLS 1, 4(B+C) & 5		
		DRAWING NUMBER 17



CROWELL BARN		
SCALE: $\frac{1}{8}" = 1 \text{ INCH}$	APPROVED BY:	DRAWN BY: IAN ELLISON
DATE: 2-21-13		REVISED 6/17/13
CROSS-SECTION & DETAILS		
RAFTER/TOP PLATE CONNECTION		DRAWING NUMBER 18

## WINDOWS

FROM A SALVAGE YD.

PERIOD CORRECT

6/6 TRUE DIVIDED, SINGLE PANE

ALL WOOD, DOUBLE HUNG

TO FIT IN PRE-EXISTING OPENINGS

APPROX. ROUGH OPENING

A	30" x 54
B	29 1/4 x 54
C	27 x 30 FIXED
D	34 1/2 x 54
E	33 3/8 x 26 1/4 SIDE HINGED

## DOORS

INTERIOR: PINE T+G, w/CLENCHED NAILS

SLIDING: OLD PINE BOTH FACES  
w/ 1" RIGID INSULATION

SWING BARN DOORS (I) BUILT AS IN  
PHOTO w/ WINDOWS

DUTCH DOOR (H) SALVAGED OR MADE  
USE PHOTOS FOR ALL OTHER INFO.

LOFT DOOR (K) T+G BDS, Z-BACK

APPROX. ROUGH OPENINGS

F	9'-6" x 9'-0"
G	2'-8" x 6'-8"
H	3'-0" x 6'-8"
I	2 / 4'-0" x 93" (R.O. 8' x 93")
J	2'-6" x 6'-0"
K	3'-0" x 3'-4"
L	CLOSET DOOR - SEE PHOTOS - PINE

## CROWELL BARN

SCALE: —

APPROVED BY:

DRAWN BY JAN

DATE: APRIL 26/13

REVISED 6/17/13

## WINDOW & DOOR SCHEDULE

SEE P. 9 FOR LOCATIONS  
(P. 3+4)

DRAWING NUMBER

19