





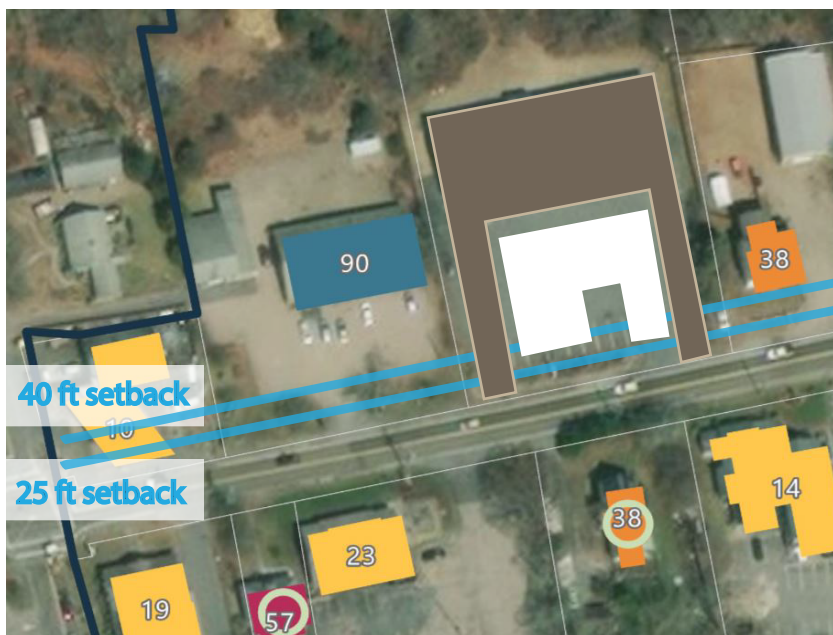
West Harwich DCPC

Sample Site Arrangements that would meet Potential New Building Setback, Facade Width, and Parking Location Requirements

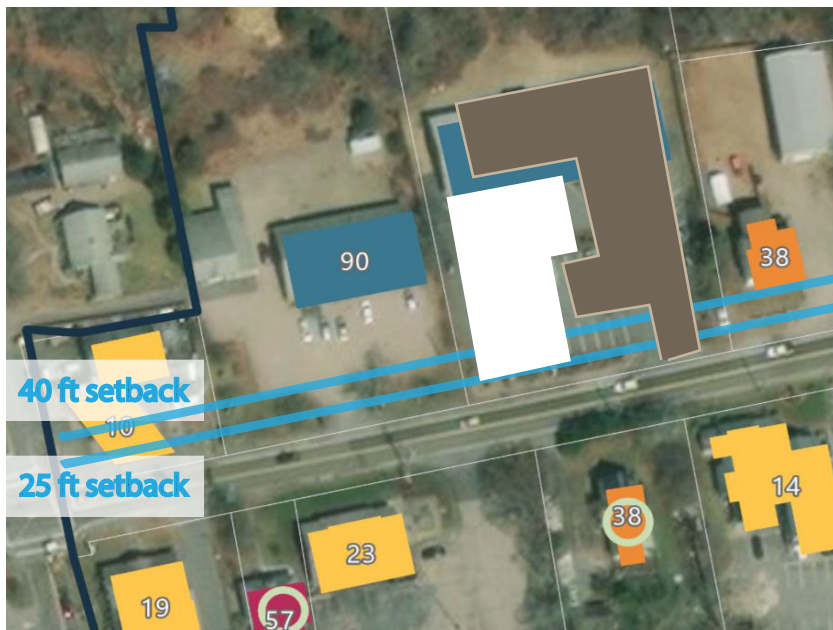
These graphics were developed to help the town evaluate new dimensional regulations for narrow and wide lots in the DCPC area and do not illustrate proposed new developments

Key:

-  Minimum/Maximum Building Setback Line
-  Potential New Building Footprint Potential
-  New Parking Area
-  Existing Building Footprints
(Numbers on buildings indicate the existing setback)



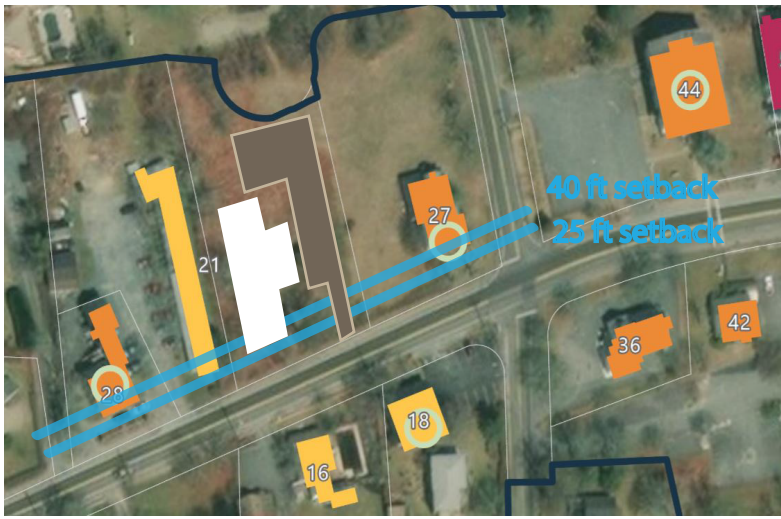
DRAFT 4-16-20



The information depicted on these maps and figures are for illustrative and planning purposes only. They are not adequate for legal boundary definition, regulatory interpretation, or parcel level analysis. They should not substitute for actual on-site survey, or supersede deed research.



CAPE COD
COMMISSION









West Harwich DCPC

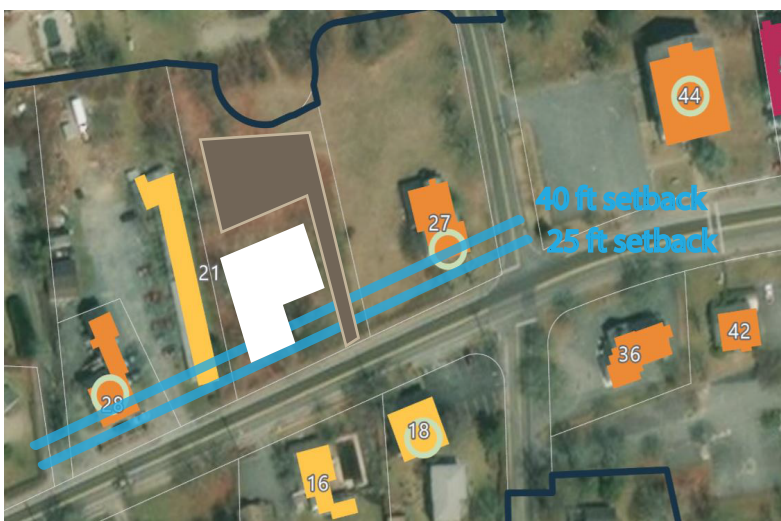
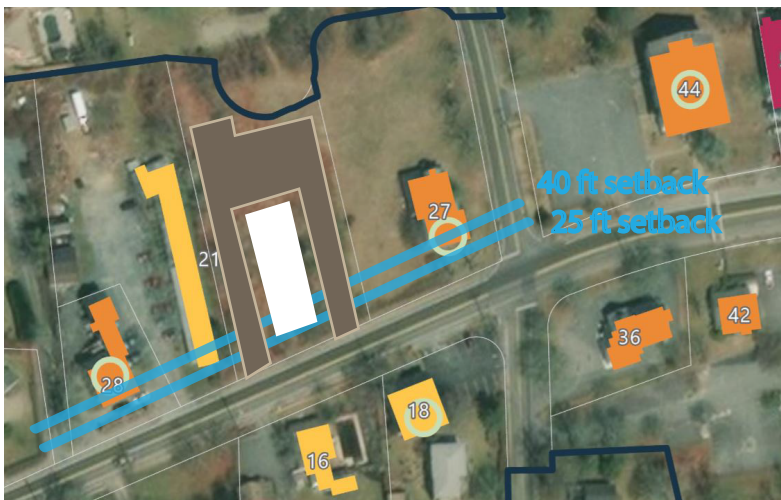
Sample Site Arrangements that would meet Potential New Building Setback, Facade Width, and Parking Location Requirements

These graphics were developed to help the town evaluate new dimensional regulations for narrow and wide lots in the DCPC area and do not illustrate proposed new developments

Key:

-  Minimum/Maximum Building Setback Line
-  Potential New Building Footprint Potential
-  New Parking Area
-  Existing Building Footprints
-  (Numbers on buildings indicate the existing setback)
-  (Numbers on buildings indicate the existing setback)

DRAFT 4-16-20



The information depicted on these maps and figures are for illustrative and planning purposes only. They are not adequate for legal boundary definition, regulatory interpretation, or parcel level analysis. They should not substitute for actual on-site survey, or supersede deed research.



CAPE COD
COMMISSION