



NO.	DATE	REVISION	BY

SEAL

DRAFT

PROJECT
PROPOSED DOCK AND SEAWALL IMPROVEMENTS
4 MILL POINT ROAD
SHEET TITLE
YAKAVONIS
HARWICH, MA

OVERALL SITE PLAN

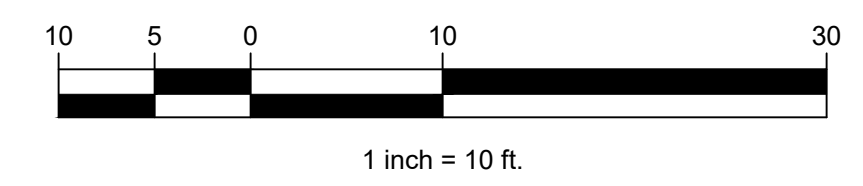
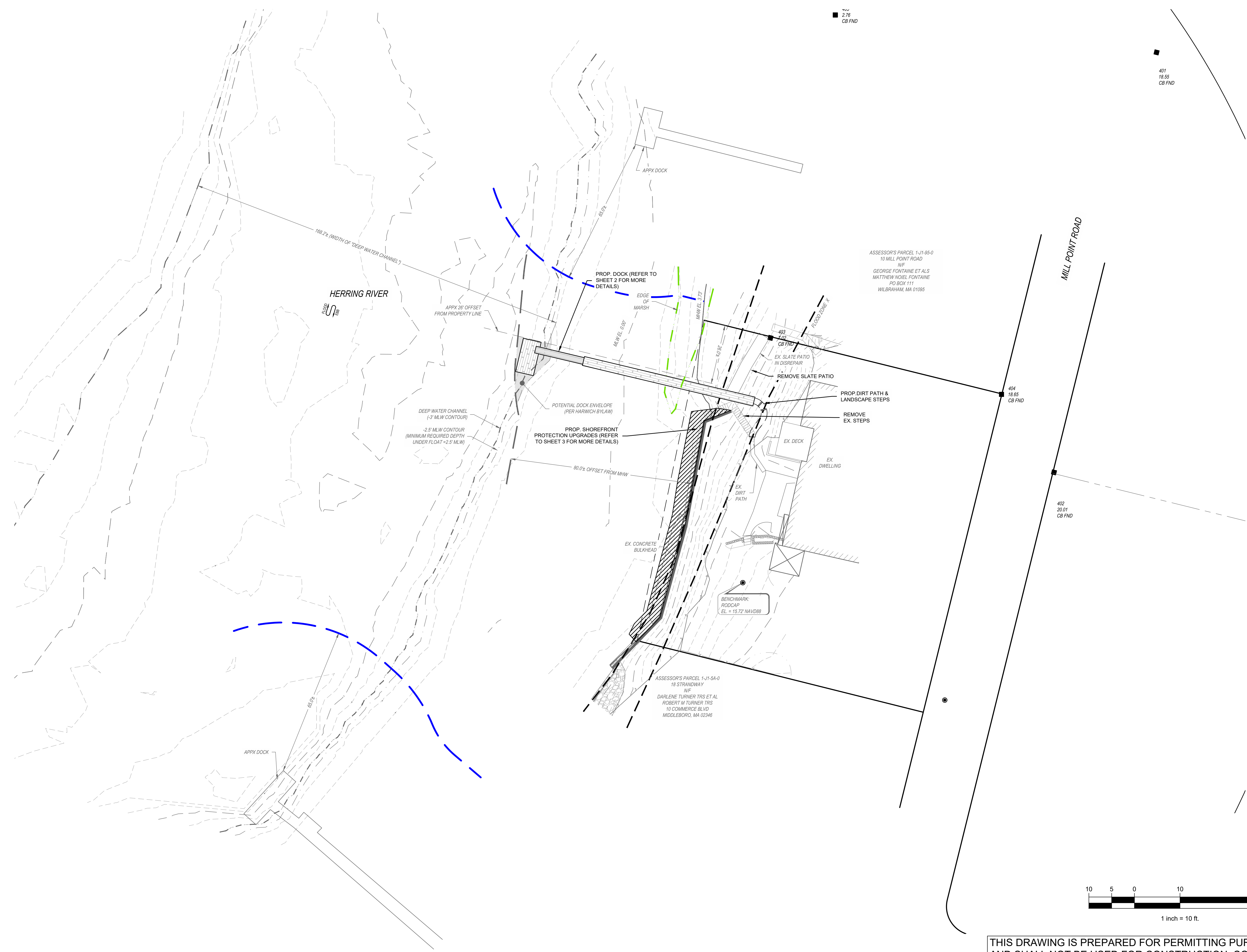
SCALE	AS NOTED
DRAWING FILE	C19564-MAR.dwg
DATE	03-07-2023
DRAWN BY	MJT
CHECKED BY	TDT

Coastal Engineering Co., Inc. © 2023

C-101

3 OF 5 SHEETS

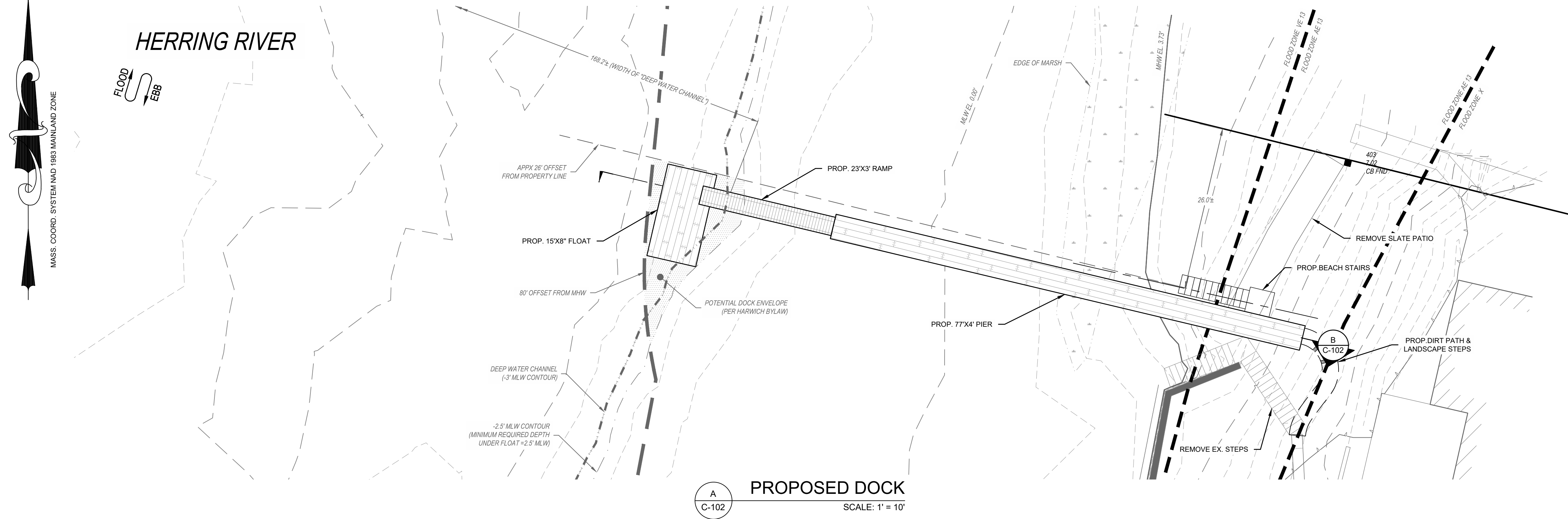
PROJECT NO. C19564.00



A
C-101

SITE OVERVIEW PLAN
SCALE: 1" = 20'

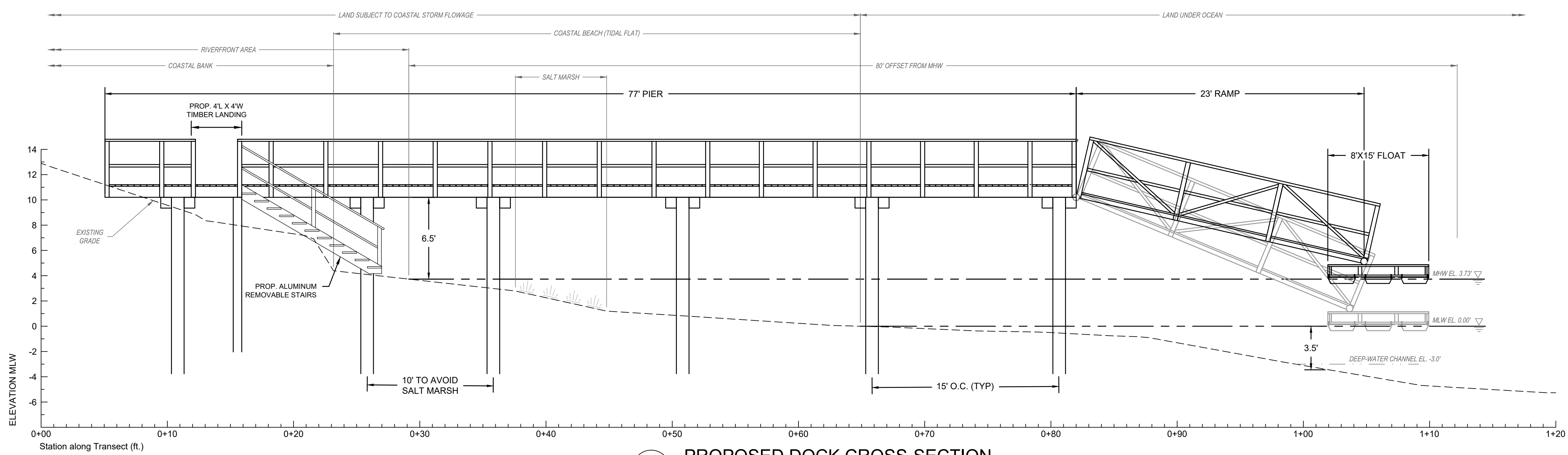
THIS DRAWING IS PREPARED FOR PERMITTING PURPOSES ONLY AND SHALL NOT BE USED FOR CONSTRUCTION. CONTRACTOR SHALL OBTAIN FINAL CONSTRUCTION DETAILS FROM THE ENGINEER PRIOR TO PREPARATION OF CONSTRUCTION BID AND BEFORE BEGINNING ANY WORK.



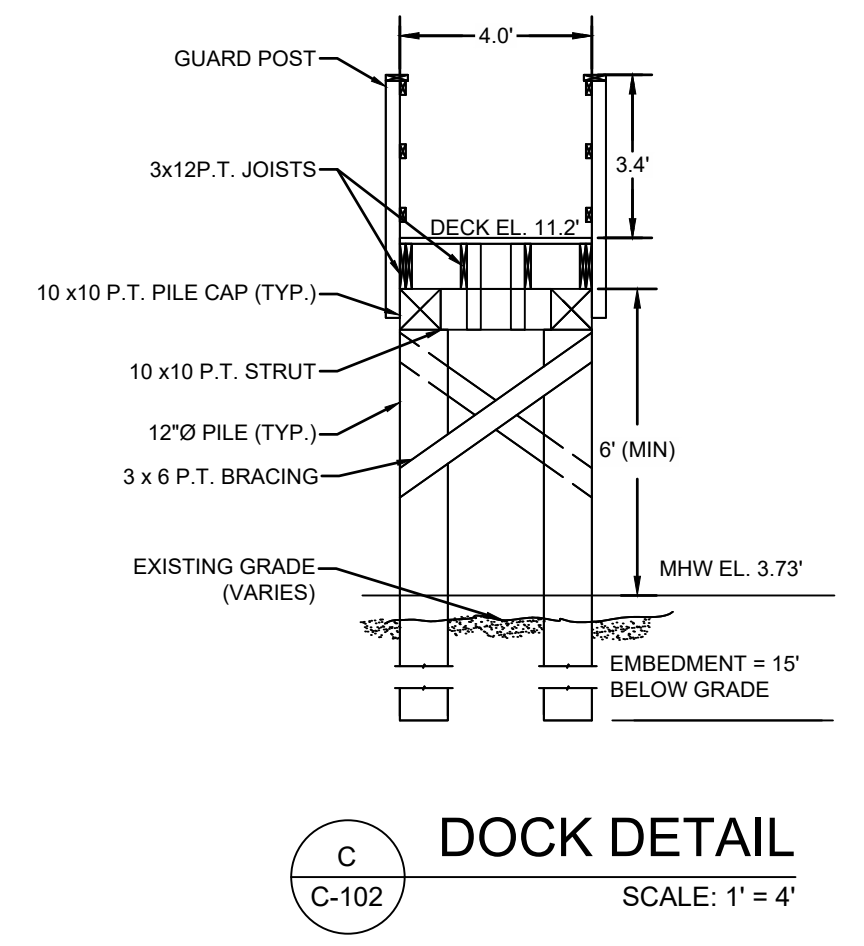
REGULATORY REQUIREMENTS

HARWICH WETLAND PROTECTION REGS		
REGULATION	REQUIREMENT	DESIGN
FLOAT SIZE	200 S.F. MAX	120 S.F.
WATER DEPTH	2.5' (MIN)	3.5'
SEAWARD EXTENTS	80' FROM MHW (MAX)	79.6'
CHANNEL LINE	MAX 50' INTO DEEP WATER CHANNEL	10'
OFFSET TO ADJACENT STRUC.	65' MIN	96.2'
2003 DEP SMALL DOCKS & PIERS		
SEAWARD EXTENT	25% WIDTH OF WATERWAY	15%
PROPERTY LINE	25' MIN	26'
PIER HEIGHT	5' ABOVE MHW (MIN)	6.5'
DEPTH	1.5' (BELOW FLOAT OR ALONG END OF PIER)	3.5'
PIER WIDTH	4' MAX	4.0'
DEPTH (FOR SHELLFISH AREAS)	2.5' FROM BOT. OF FLOAT @ MLW	3.0'

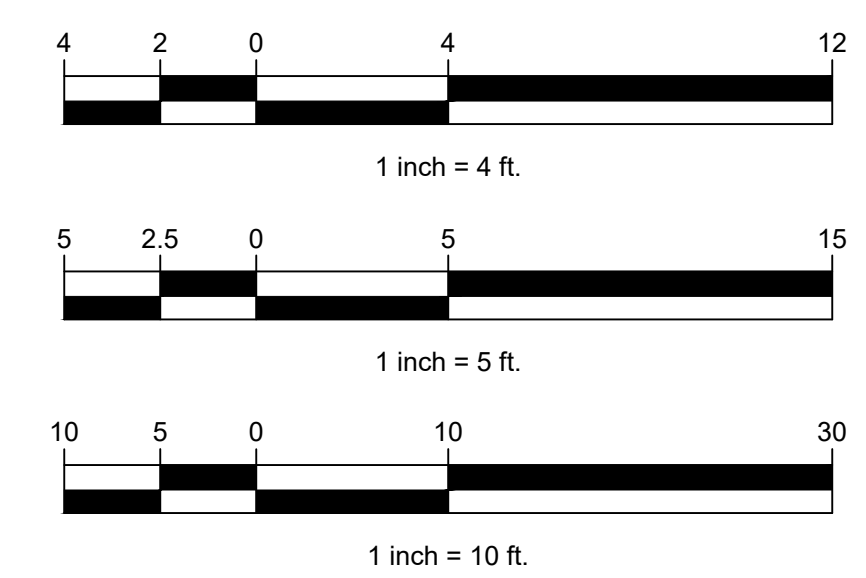
A
C-102
SCALE: 1" = 10'



B
C-102
SCALE: 1" = 5'



C
C-102
SCALE: 1" = 4'



THIS DRAWING IS PREPARED FOR PERMITTING PURPOSES ONLY AND SHALL NOT BE USED FOR CONSTRUCTION. CONTRACTOR SHALL OBTAIN FINAL CONSTRUCTION DETAILS FROM THE ENGINEER PRIOR TO PREPARATION OF CONSTRUCTION BID AND BEFORE BEGINNING ANY WORK.

NO.	DATE	REVISION	BY

SEAL

DRAFT

PROJECT: PROPOSED DOCK AND SEAWALL IMPROVEMENTS HARWICH, MA
4 MILL POINT ROAD
SHEET TITLE: PROPOSED DOCK PLAN VIEW, CROSS SECTION AND DETAILS

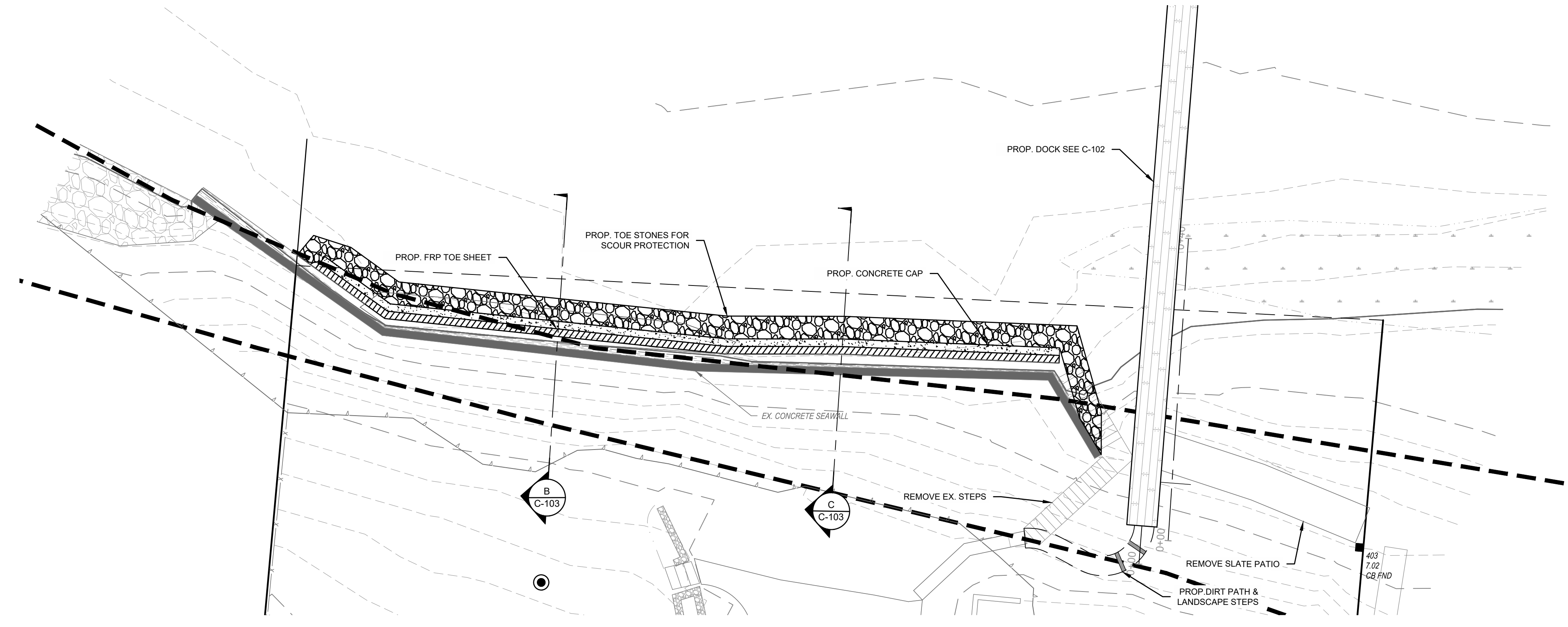
SCALE: AS NOTED

DRAWING FILE: C19564-MAR.dwg

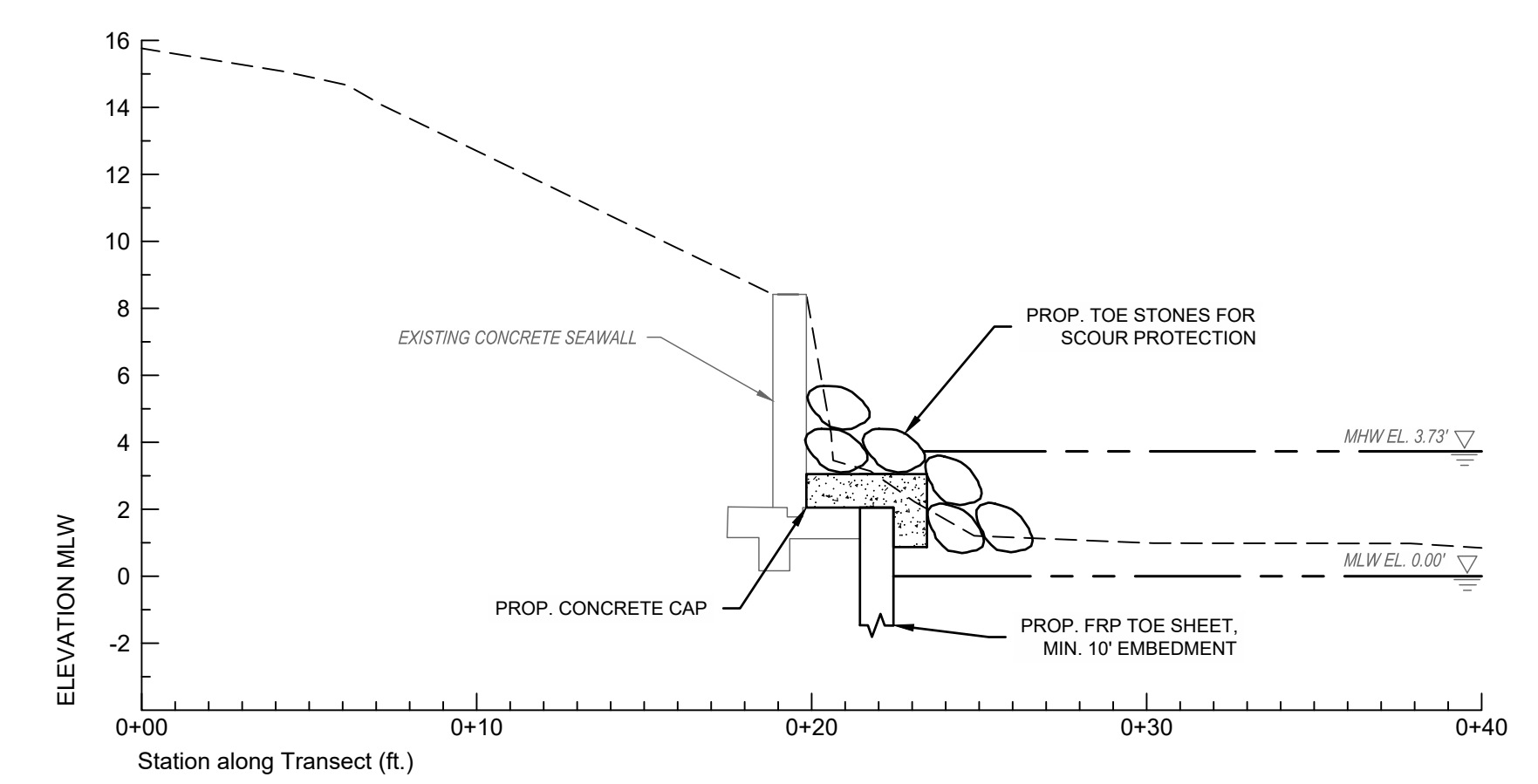
DATE: 03-07-2023

DRAWN BY: MJT

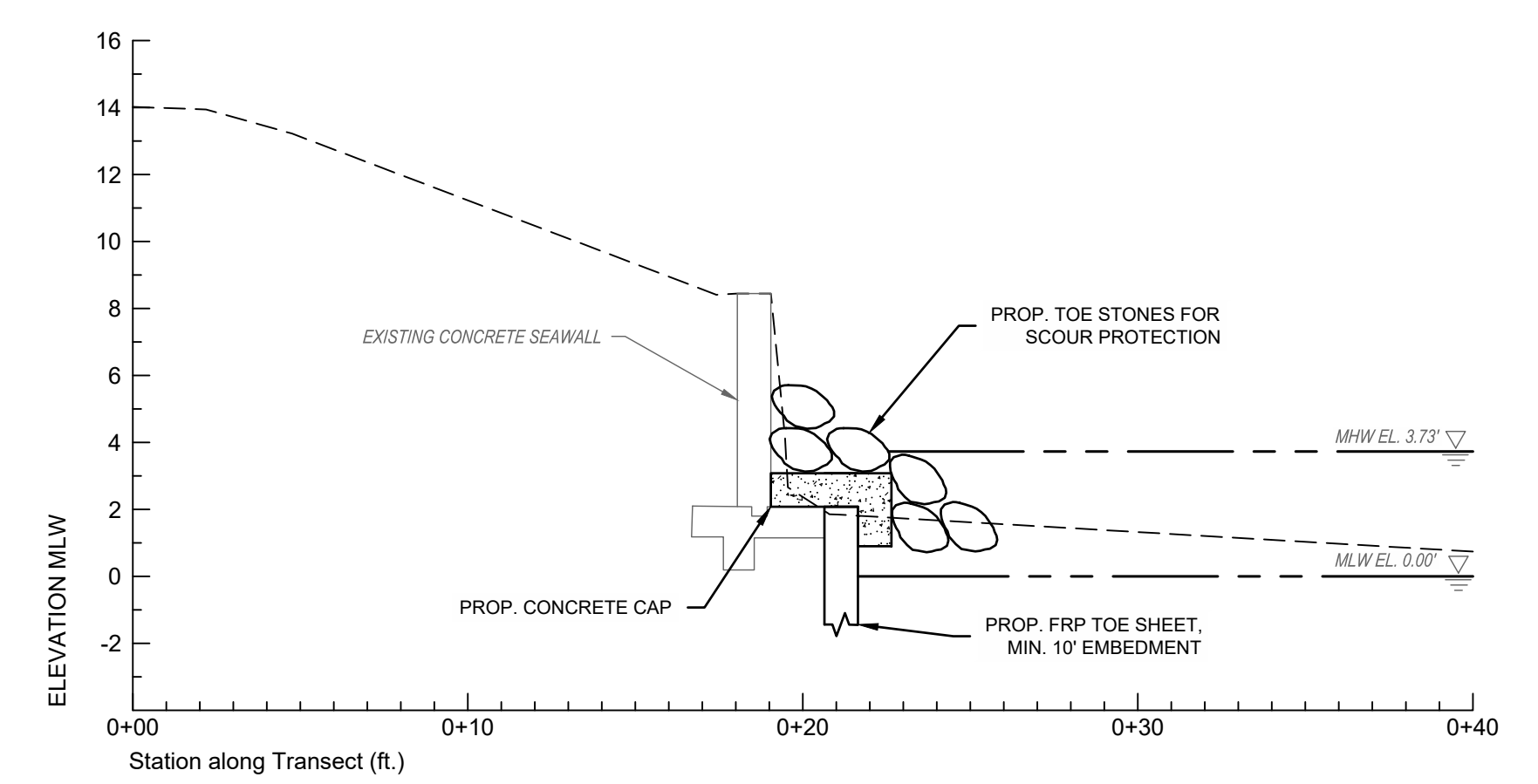
CHECKED BY: TDT



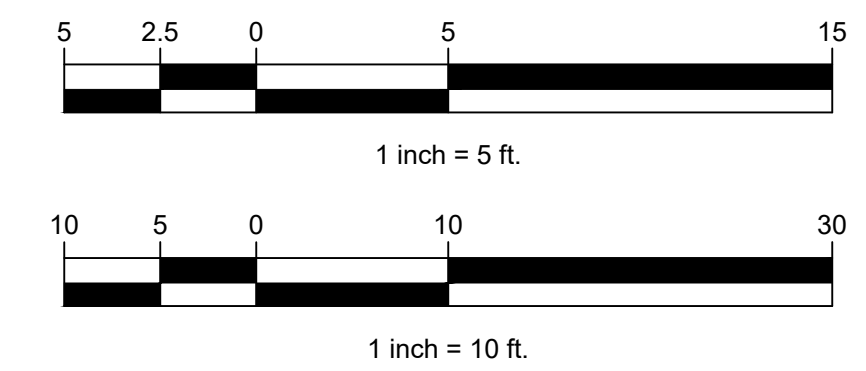
A
C-103 **PROPOSED CONCRETE SEAWALL IMPROVEMENTS**
SCALE: 1" = 10'



B
C-103 **PROPOSED SEAWALL IMPROVEMENTS**
SCALE: 1" = 5'



C
C-103 **PROPOSED SEAWALL IMPROVEMENTS**
SCALE: 1" = 5'



THIS DRAWING IS PREPARED FOR PERMITTING PURPOSES ONLY AND SHALL NOT BE USED FOR CONSTRUCTION. CONTRACTOR SHALL OBTAIN FINAL CONSTRUCTION DETAILS FROM THE ENGINEER PRIOR TO PREPARATION OF CONSTRUCTION BID AND BEFORE BEGINNING ANY WORK.

NO.	DATE	REVISION	BY

SEAL

DRAFT

PROJECT: **PROPOSED DOCK AND SEAWALL IMPROVEMENTS**
HARWICH, MA
4 MILL POINT ROAD
YAKAVONIS
SHEET TITLE: **PLAN SHOWING CONCRETE SEAWALL IMPROVEMENTS**

SCALE: AS NOTED
DRAWING FILE: C19564-MAR.dwg
DATE: 03-07-2023
DRAWN BY: MJT
CHECKED BY: TDT

C-103
5 OF 5 SHEETS
PROJECT NO. C19564.00

Coastal Engineering Co., Inc. © 2023