



City and Town Notification for Roadway Work

MassDOT will be conducting work in your community in the near future. The following project information is being forwarded to you for distribution to affect City/Town Departments.

Project Location (City/Town): SANDWICH to EASTHAM Route 6 (Mid-Cape Highway)

Estimated Start Date of Work: February 22 2018

Project Type: Fabrication and Installation of Ground Mounted Guide and Traffic Signs along a Section of Route 6 (Mid-Cape Highway).

Resident Engineer and Contact Information: Richard McKenzie 774-292-2017 cell

Description of Work Fabrication and Installation of regulatory signs along a Section of Route 6 (Mid-Cape Highway).secondary roadways. Exit 9 Dennis to Orleans Rotary

Contractor and Contact Information: Liddell Brothers, Inc. (781) 293-2100 office
Superintendent Josh Liddell 781-884-7404

Hours of Operation (Day/Night): Monday thru Friday 7:00 am to 3:30 pm
Work on Rt 6 secondary roadways/ ramps
Starting March 5th nights with approved detours 9pm to 5 am Rt 6 exit 9
Dennis to Orleans rotary. Replacing signage on RT 6, ramps and secondary
roadways.

Description of Traffic Management: Day work; No lanes closures, work on shoulders, ramps and secondary roadways accompanied by police officer.
Night shift Exit 9 Dennis to Orleans Rotary with Detour.

Estimated Duration of Work: February 22, 2018 to May 24, 2018

Additional Information: Approved detour plans attached to email notification

DETOUR SIGNS

ROUTE 6 EASTBOUND DETOURS	ROUTE 6 WESTBOUND DETOURS
EXIT 9 TO 10	EXIT 10 TO 9
DETOUR RIGHT	DETOUR LEFT
DETOUR LEFT	DETOUR RIGHT
DETOUR LEFT	DETOUR RIGHT
DETOUR LEFT	DETOUR LEFT
DETOUR RIGHT	DETOUR RIGHT
DETOUR LEFT	DETOUR RIGHT
DETOUR LEFT	DETOUR RIGHT
END DETOUR	END DETOUR
EXIT 10 TO 11	EXIT 11 TO 10
DETOUR LEFT	DETOUR RIGHT
DETOUR RIGHT	DETOUR LEFT
DETOUR RIGHT	DETOUR LEFT
END DETOUR	END DETOUR
EXIT 11 TO 12	EXIT 12 TO 11
DETOUR RIGHT	DETOUR RIGHT
DETOUR RIGHT	DETOUR LEFT
DETOUR RIGHT	DETOUR LEFT
END DETOUR	END DETOUR
EXIT 12 TO ROTARY	ROTARY TO EXIT 12
DETOUR RIGHT	DETOUR (SLIGHT RIGHT)
END DETOUR	END DETOUR

TOTALS:

DETOUR RIGHT SIGNS = 15 EA

DETOUR LEFT SIGNS = 12 EA

END DETOUR = 8 EA

DETOUR SLIGHT RIGHT = 1 EA

SAFETY SETUPS

TOTAL REQUIREMENTS FOR TYPICAL SAFETY SET-UP

2 MESSAGE BOARDS

2 ROAD CLOSED AHEAD SIGNS

2 POLICE OFFICER AHEAD SIGNS

2 DETOUR AHEAD SIGNS

2 SQUEEZE RIGHT SIGNS

2 ARROW BOARDS

2 ROAD CLOSED SIGNS W/ DETOUR RIGHT ARROW FOR ON ROUTE 6 NEAR EXIT RAMP

8 TYPE III BARRICADES (4 ON ROUTE 6, 1 ON EACH RAMP ENTRANCE)

2 CRASH TRUCKS

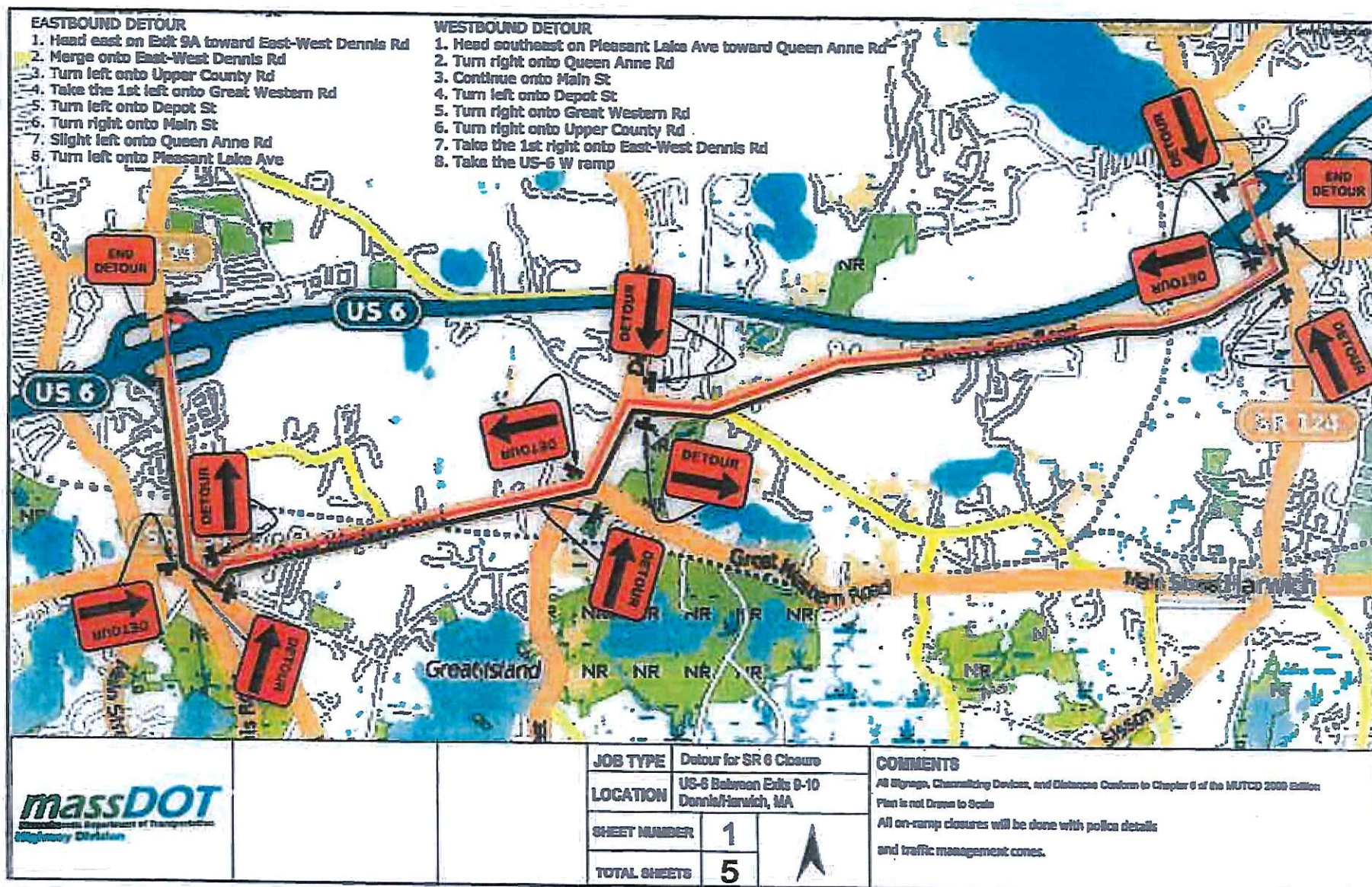
6 POLICE DETAILS

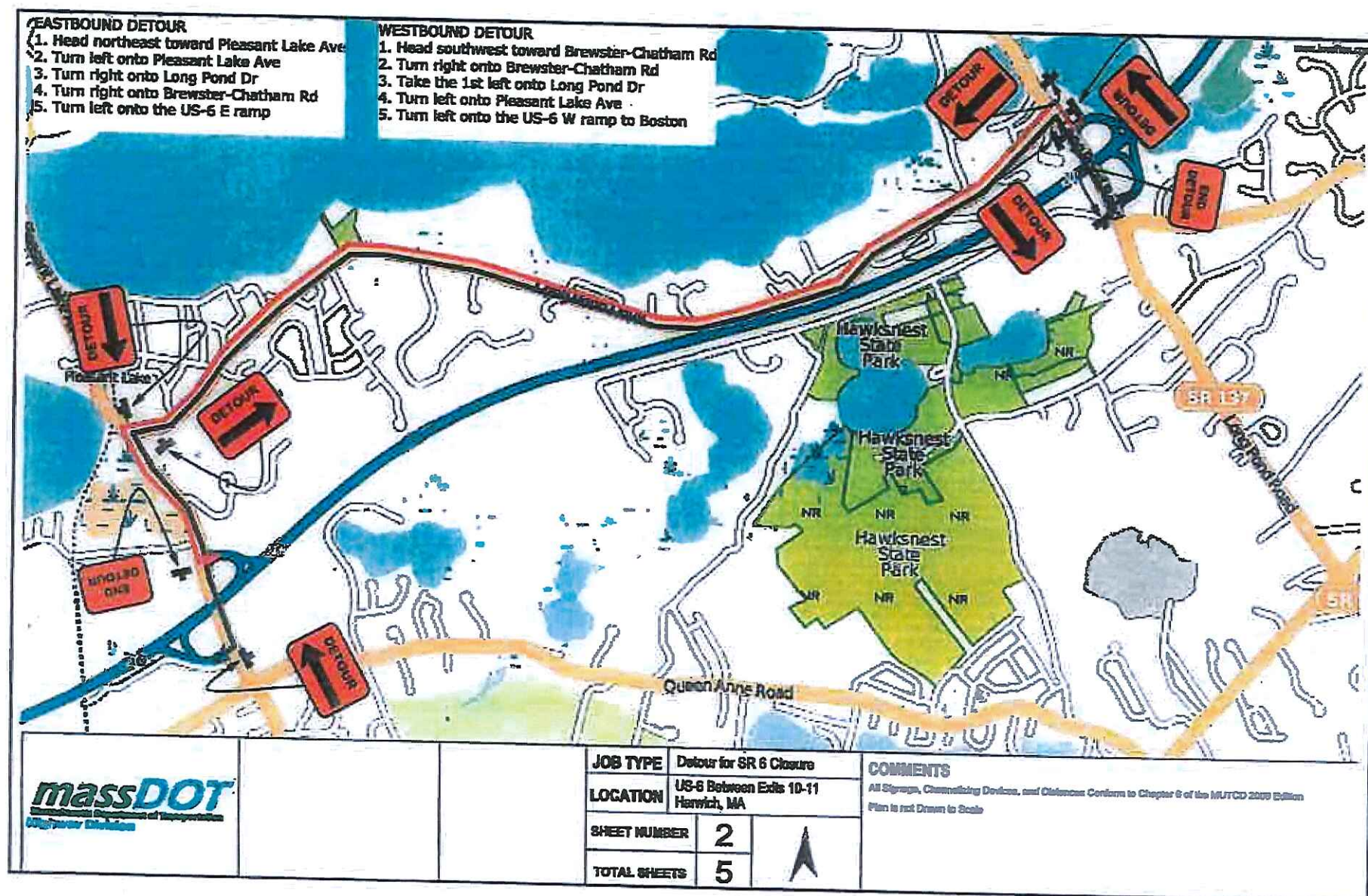
2 LIGHT TOWERS FOR SAFETY SET-UP AT EXITS

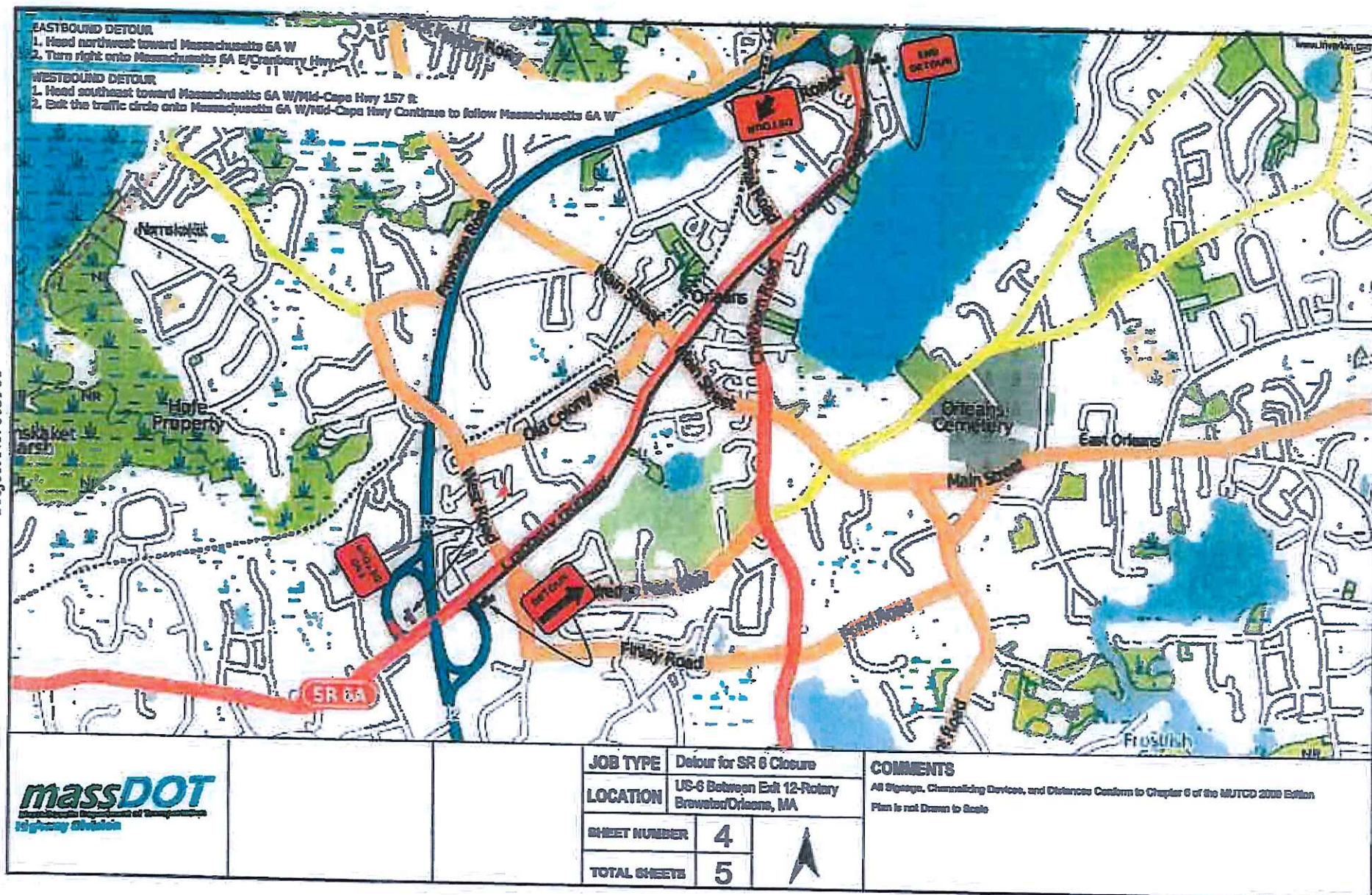
DRUMS FOR SAFETY SET-UP (10 FLASHING DRUMS MIN FOR BEGINNING OF TAPERS)

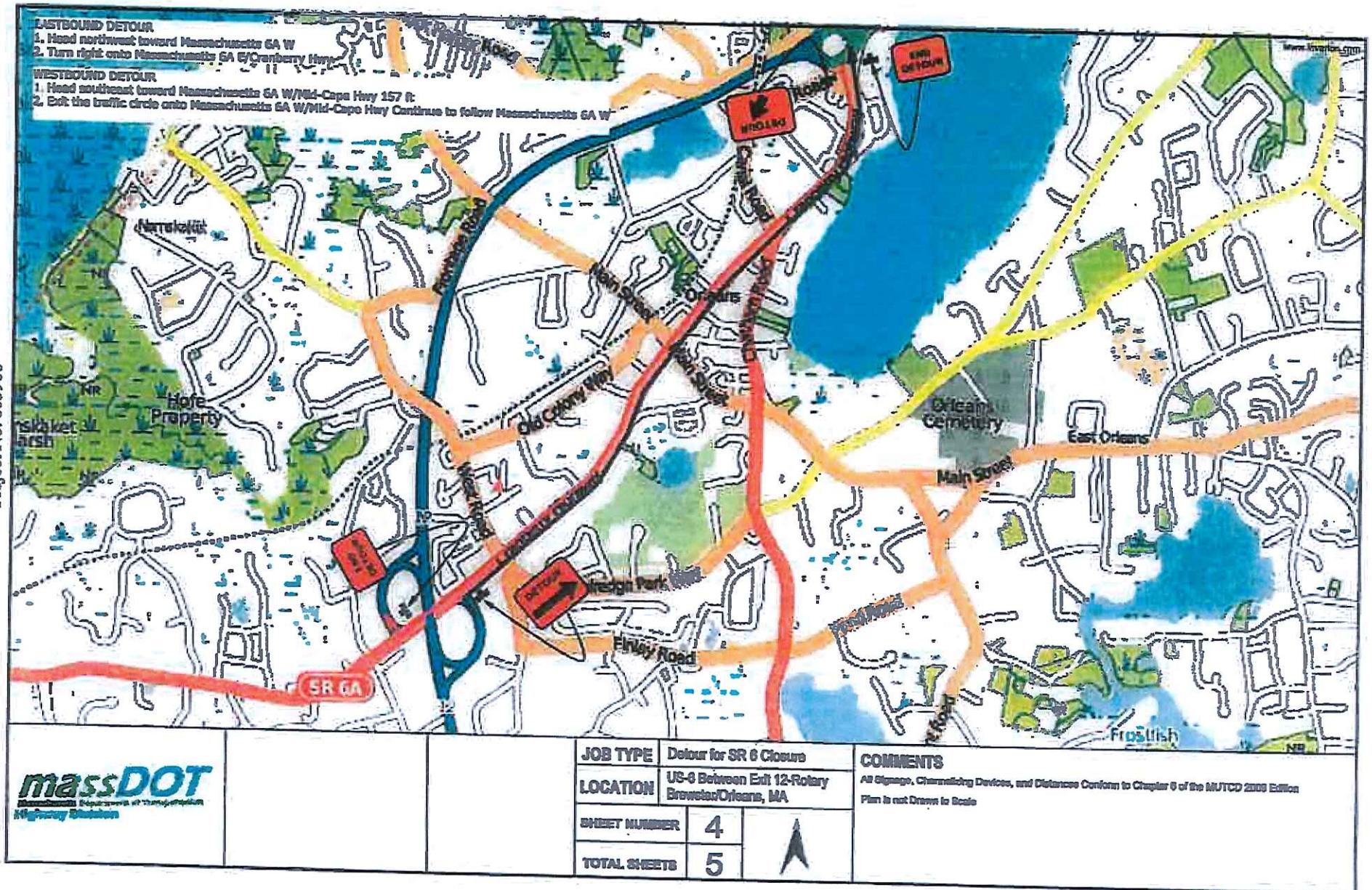
4 ROAD CLOSED SIGNS FOR ACCESS AT ALL RAMP ENTRANCES

4 DETOUR RIGHT OR LEFT SIGNS (DEPENDENT ON SITUATION FOR ENTRANCE TO RAMP)



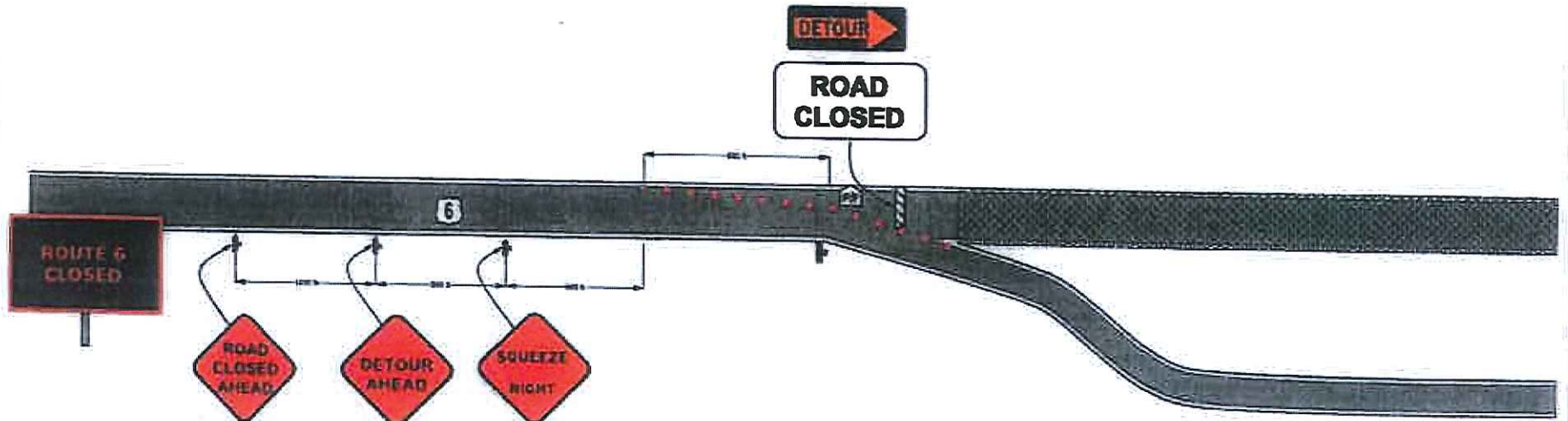




[illegible]

Legend

.....	CLOSED ROAD TRAFFIC
XXXXXX	WORK AREA
PC	POLICE OR FLAGGER DETAIL
P	PEM LOCATION
Variable Message Board	VARIABLE MESSAGE BOARD



massDOT
Massachusetts Department of Transportation
Highway Division

JOB TYPE	Typical Closure at Off Ramps	
LOCATION	US-6 Off Ramps Between Exits 9 and 12	
SHEET NUMBER	5	▲
TOTAL SHEETS	5	

COMMENTS

All Signs, Channelizing Devices, and Distances Conform to Chapter 6 of the MUTCD 2003 Edition
Plan is not Drawn to Scale
Variable Message Board placed one mile prior to closed section of Route 6