

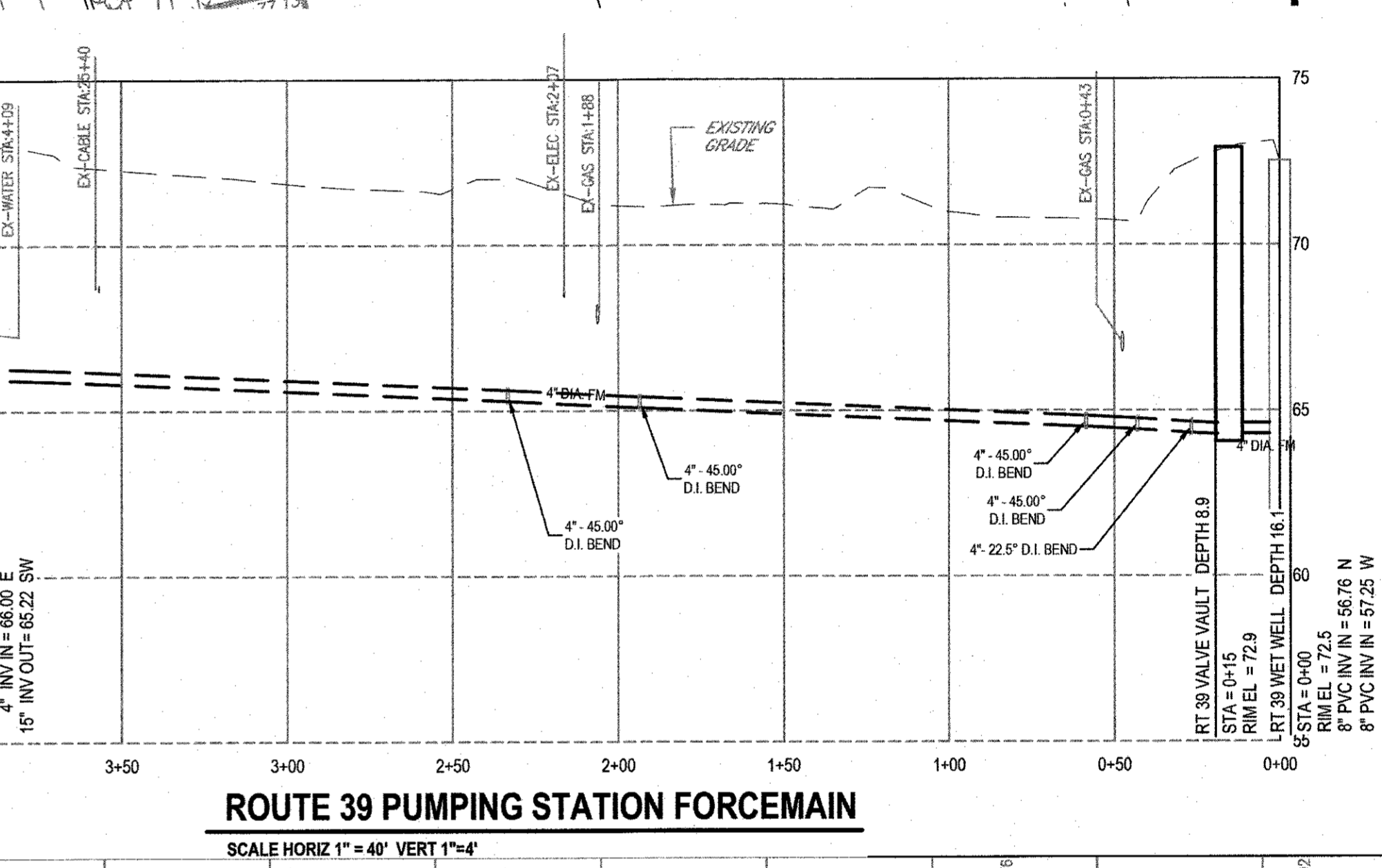
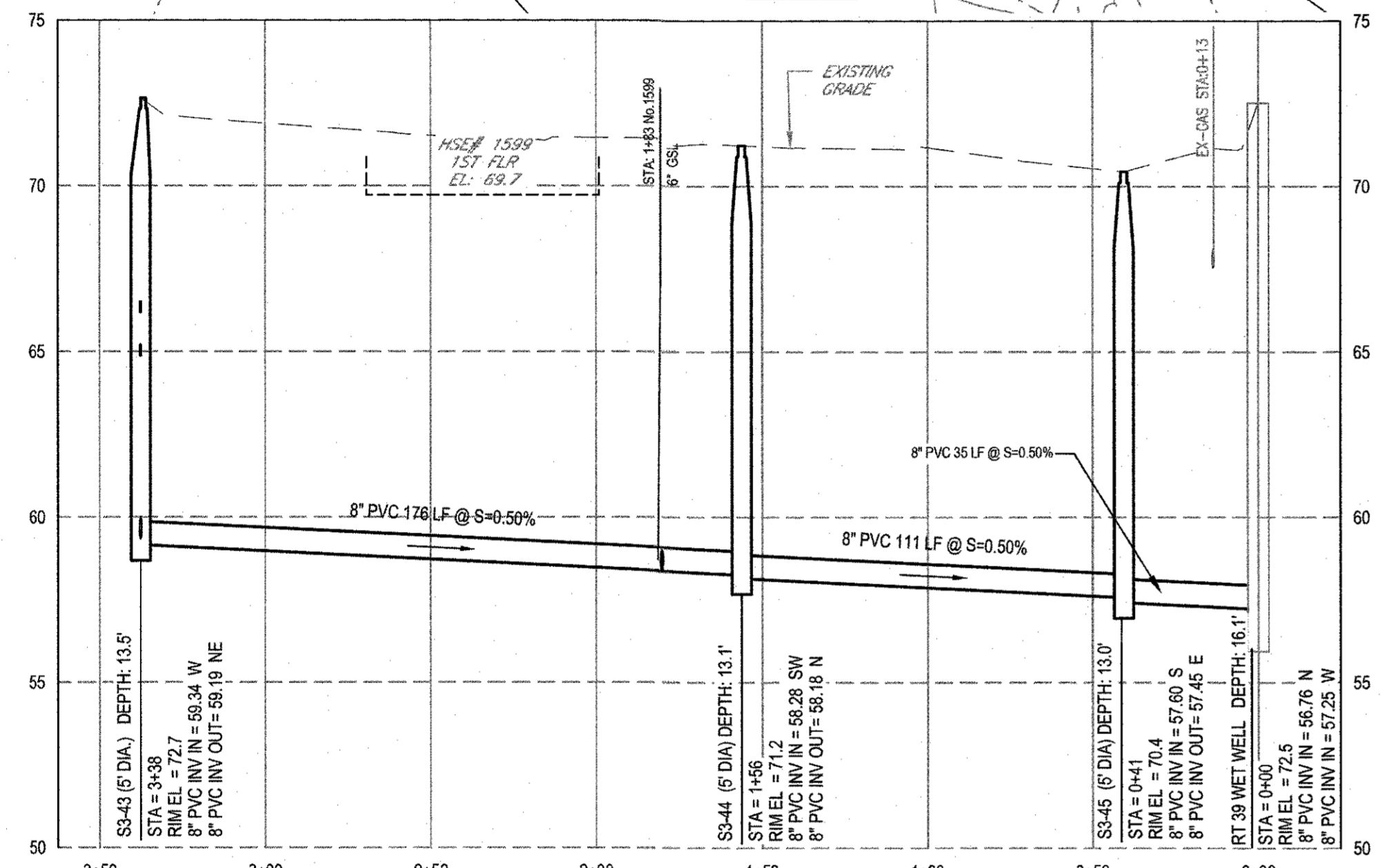
ORLEANS-HARWICH ROAD (ROUTE 39)

NOTE: NO SEPTIC ELEVATION INFORMATION. HOUSE #1626 MAY REQUIRE GRINDER PUMP FOR CONNECTION. REFER TO GENERAL NOTES.

NOTE: NO SEPTIC ELEVATION INFORMATION. HOUSE #1626 MAY REQUIRE GRINDER PUMP FOR CONNECTION. REFER TO GENERAL NOTES.

FOR CONTINUATION SEE SHEET C003

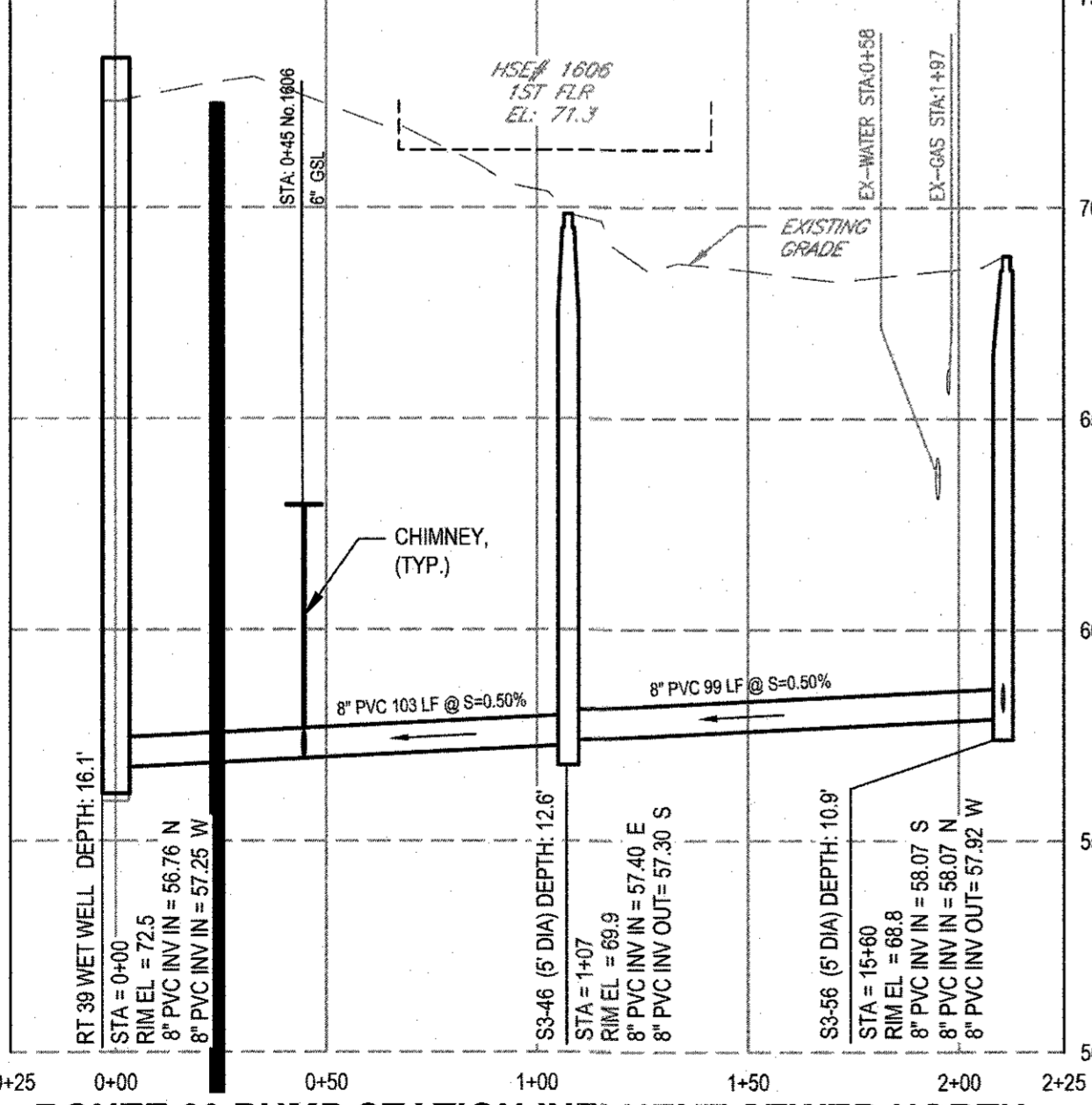
FOR CONTINUATION SEE SHEET C012



FOR CONTINUATION SEE SHEET C012

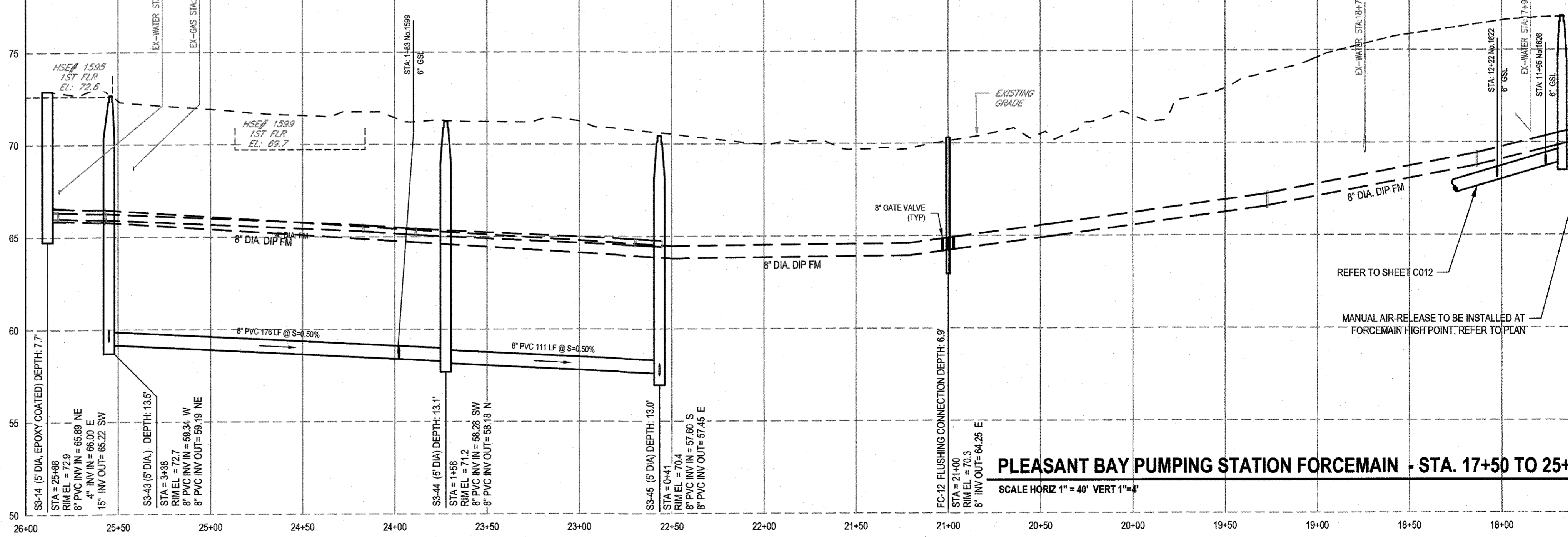
ROUTE 39 PUMP STATION INFLUENT SEWER SOUTH

SCALE HORIZ 1" = 40' VERT 1" = 4'



ROUTE 39 PUMP STATION INFLUENT SEWER NORTH

SCALE HORIZ 1" = 40' VERT 1" = 4'

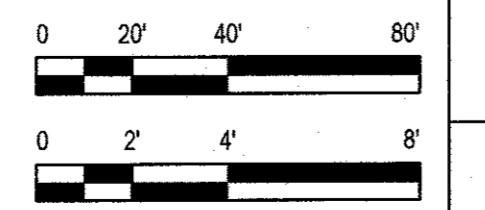


PLEASANT BAY PUMPING STATION FORCE MAIN - STA. 17+50 TO 25+87

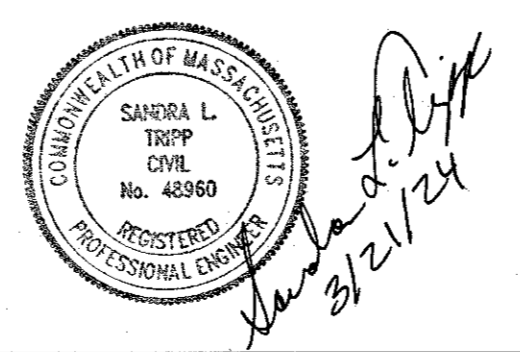
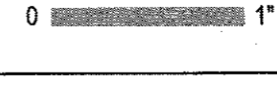
SCALE HORIZ 1" = 40' VERT 1" = 4'

FOR CONTINUATION SEE SHEET C012

NOTE: UNDERGROUND FACILITIES, STRUCTURES, AND UTILITIES HAVE BEEN PLOTTED FROM AVAILABLE SURVEYS AND RECORDS, AND THEREFORE THEIR LOCATIONS MUST BE CONSIDERED APPROXIMATE ONLY. THERE MAY BE OTHERS, THE EXISTENCE OF WHICH IS PRESENTLY NOT KNOWN. ANYONE USING UTILITY INFORMATION AND DATA PROVIDED HEREIN SHALL CALL DIG SAFE AT 811 SEVENTY TWO (72) HOURS, 3 BUSINESS DAYS IN ADVANCE TO VERIFY THE LOCATION OF UTILITIES PRIOR TO START OF CONSTRUCTION.



Bar is one inch on original size sheet



GHD Inc.
1545 Iyannough Road
Hyannis MA 02601 USA
T 1 774 470 1630 F 1 774 470 1631 W www.ghd.com

Conditions of Use
This document and the ideas and designs incorporated herein, as an instrument of professional service, is the property of GHD. This document may only be used by GHD's client (and any other person who GHD has agreed can use this document) for the purpose for which it was prepared and must not be used by any other person or for any other purposes.



Client **TOWN OF HARWICH, MASSACHUSETTS**

Project **PHASE 3 HARWICH SEWER EXTENSION PROJECT CONTRACT 1-E**

Project No. **12577255**

Date **MARCH 2024**

Scale **AS SHOWN**

ORLEANS-HARWICH ROAD (ROUTE 39) / ROUTE 39 PUMP STATION - PLAN & PROFILES

Sheet **C004**