

HARWICH PLANNING BOARD
APPROVAL NOT REQUIRED

Date _____

No determination of compliance with zoning requirements has been made or is intended.

RECORD OWNERS AND APPLICANTS:

27 SOUNDVIEW LLC

Jane C. Ayoub

REFERENCES:

Assr's. Map 26 Pcl. L1-9
Dd. Bk. 32390 Pg. 9
Assr's. Map 26 Pcl. L1-10
Dd. Bk. 24459 Pg. 254
Pl. Bk. 125 Pg. 19

LEGEND:

- CB FND - Concrete bound found
- - - Split rail fence
- ▣ Catch basin

ZONE:

R-M

PLAN NOTE:

This plan shows a division of Lot 9 and Lot 10,
Pl. Bk. 125 Pg. 19.

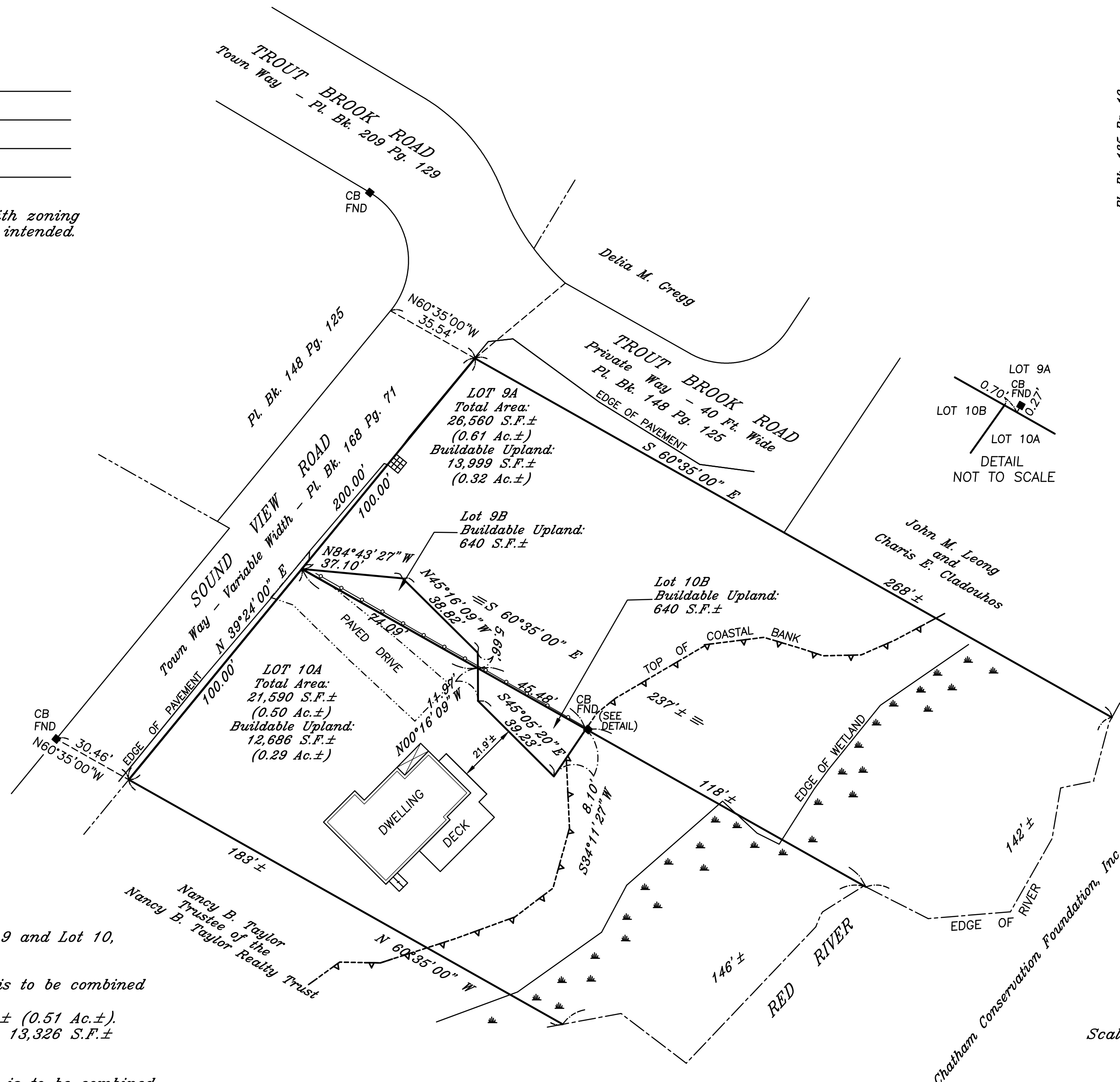
Lot 9B is not a buildable lot but is to be combined
with Lot 10A.
Total combined area - 22,230 S.F.± (0.51 Ac.±).
Total combined buildable upland - 13,326 S.F.±
(0.31 Ac.±).

Lot 10B is not a buildable lot but is to be combined
with Lot 9A.
Total combined area - 27,200 S.F.± (0.62 Ac.±).
Total combined buildable upland - 14,639 S.F.±
(0.34 Ac.±).

I certify that this plan has been prepared in
conformity with the rules and regulations of the
registers of deeds.

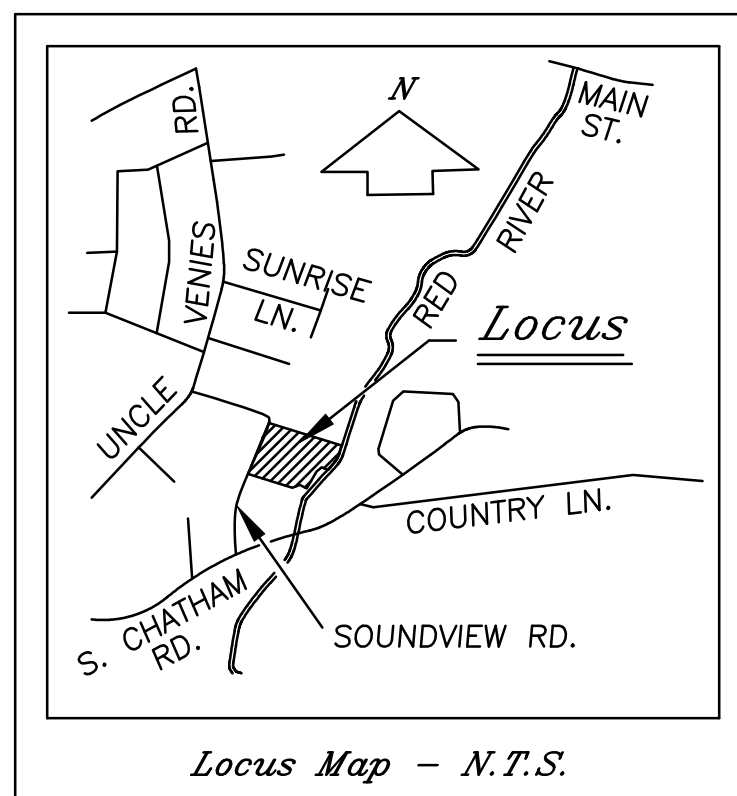
Professional Land Surveyor

Date



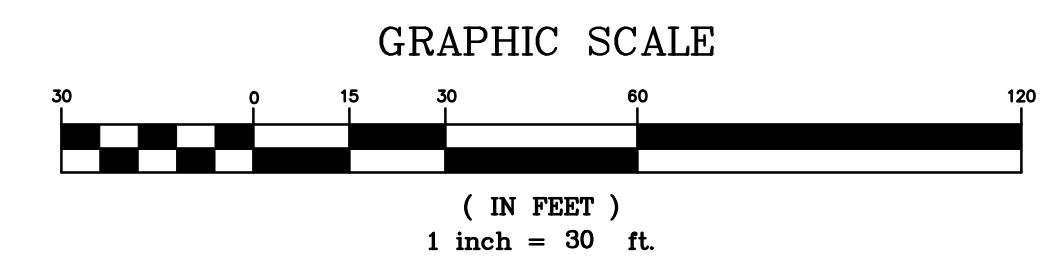
Pl. Bk. 125 Pg. 19

Reserved for Registry Use



Division of Land
in
Harwich, MA
prepared for
27 SOUNDVIEW LLC
and
Jane C. Ayoub

Scale: 1" = 30' Date: November 7, 2022



Ryder & Wilcox, Inc.
P.E. & P.L.S.
So. Orleans, MA