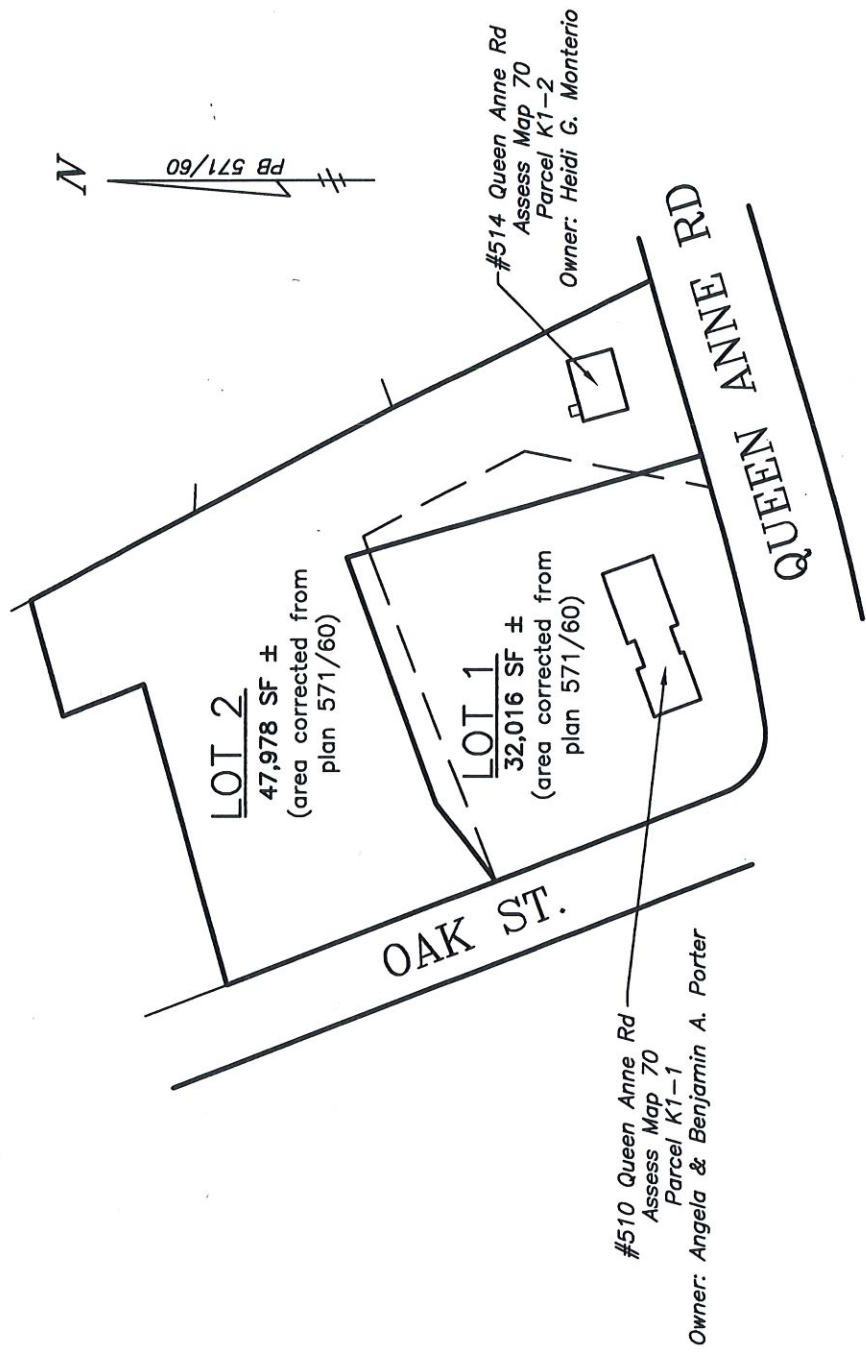


RECEIVED
OCT 10 2023
By



"APPROVAL NOT REQUIRED" PLAN
PLAN OF LAND IN HARWICH, MASS.

PREPARED FOR

Heidi Montero and Angela & Benjamin Porter

PLAN BY: Moran Engineering Associates
941 Main Street
South Harwich, Mass. 02661

DATE: 7/18/2023

SCALE: 1" = 100'

