

PROJECT:

575 Route 28
Harwich Port, MA

COPYRIGHT:
THE USER ACKNOWLEDGES THAT THE ARCHITECT'S DOCUMENTS ARE INSTRUMENTS OF PROFESSIONAL SERVICE AND ARE BY COMMON COPYRIGHT. THIS DOCUMENT IS THE PROPERTY OF THE ARCHITECT AND SHALL NOT BE MODIFIED, AMENDED, OR ALTERED IN ANY WAY. IT IS ISSUED FOR INFORMATION PURPOSES ONLY. THE USER AGREES TO HOLD HARMLESS, INDEMNIFY AND DEFEND THE ARCHITECT AGAINST ANY AND ALL DAMAGES, CLAIMS, AND LOSSES, INCLUDING DEFENSE COSTS, ARISING OUT OF ANY USE, REUSE OR COPYING OF THIS DOCUMENT.

NOTE: **PLANNING BOARD
SUBMISSION
05-19-22**



DRAWING TITLE:

LANDSCAPE PLAN

REVISIONS

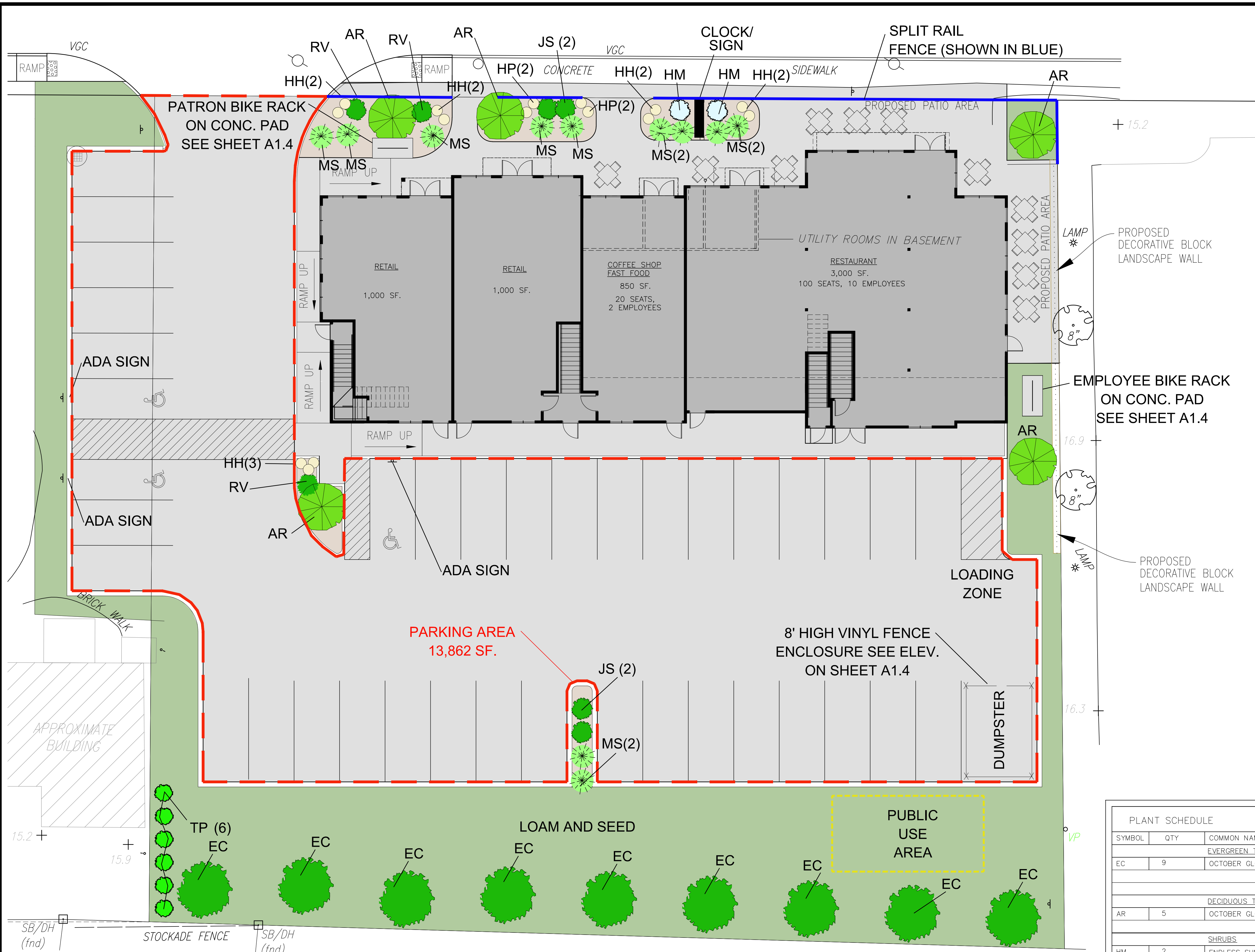
NO.	DATE	DESCRIPTION
△	07-13-22	GENERAL
△	08-12-22	GENERAL

DATE OF ISSUE: **05-19-22**

DRAWN BY: **MRH** CHECKED BY: **GBS**

DRAWING NUMBER:

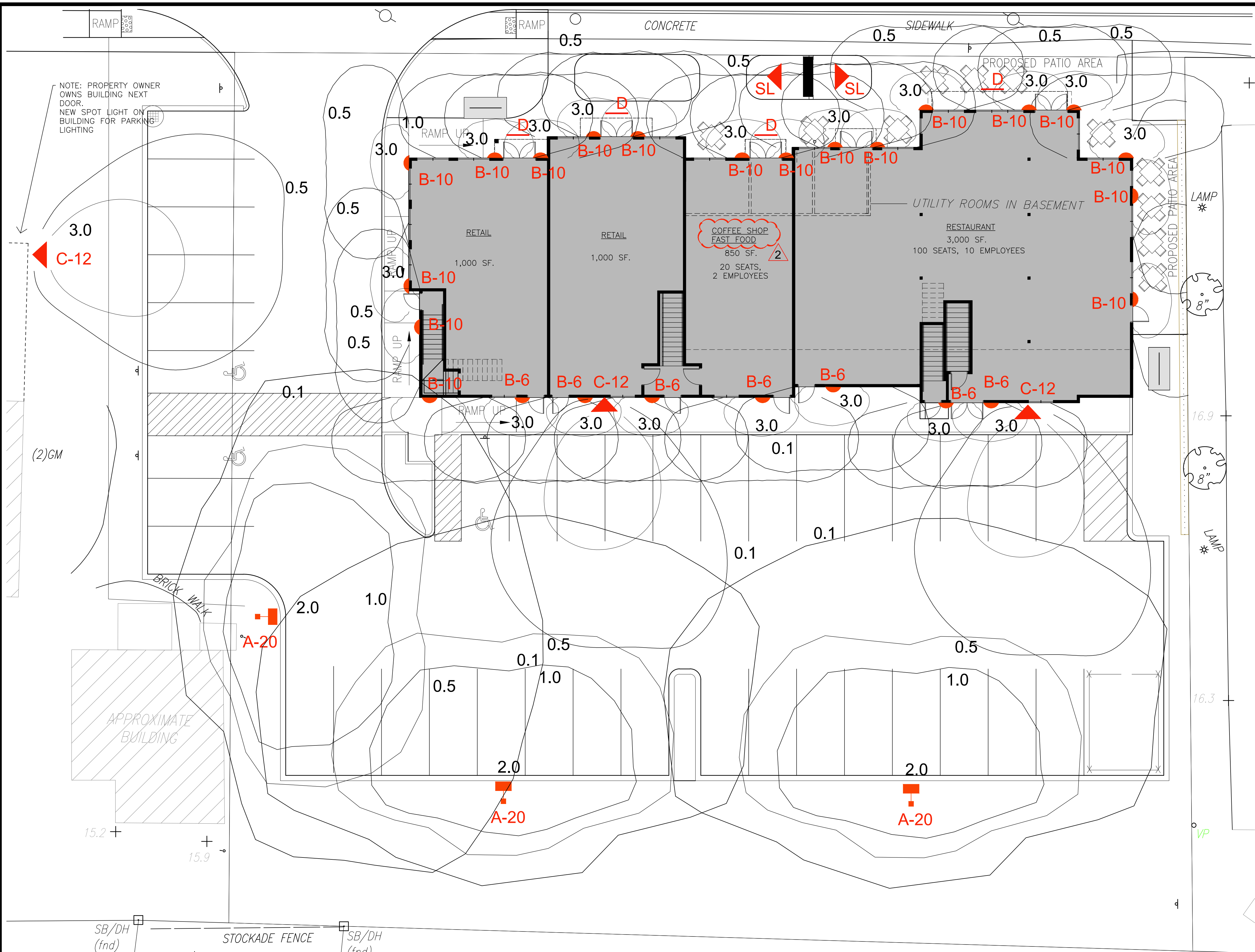
L1.0



1 LANDSCAPE PLAN
L1.0 SCALE: 1" = 10'-0"

PARKING AREA - LANDSCAPE ISLANDS
REQUIRED - 13,862 SF. X 10% = 1,386 SF.
PROVIDED - 248 SF. (1.7%)

PLANT SCHEDULE					
SYMBOL	QTY	COMMON NAME	SIZE	SPACING	COMMENTS
EVERGREEN TREES					
EC	9	OCTOBER GLORY SWAMP MAPLE	3" CAL	20' O.C.	PARKING SCREEN
DECIDUOUS TREES					
AR	5	OCTOBER GLORY SWAMP MAPLE	3" CAL		INT. LANDSCAPE
SHRUBS					
HM	2	ENDLESS SUMMER HYDRANGEA	#5		INT. LANDSCAPE
JS	4	SEAGREEN JUNIPER	2'-2.5' SPR		INT. LANDSCAPE
RV	4	SWAMP AZALEA	2.5'-3' HT		INT. LANDSCAPE
TP	6	DARK AMERICAN ARBORVITAE	4'-6"		PLANTING SCREEN
ORNAMENTAL GRASSES					
MS	11	MOURNING LIGHT MAIDEN GRASS	#3		INT. LANDSCAPE
PERENNIALS AND ANNUALS					
HH	11	HAPPY RETURNS DAYLILLY	#1		INT. LANDSCAPE
HP	4	PANDORAS BOX DAYLILLY	#1		INT. LANDSCAPE



d#series

TYPE A



TYPE B



TYPE C



TYPE SL

RESCOM ARCHITECTURAL, INC

RESIDENTIAL & COMMERCIAL ARCHITECTURE

118 WATERHOUSE ROAD
BOURNE, MA 02532

PHONE: (508) 759-9828
FAX: (508) 759-9802

www.rescomarch.com

PROJECT:

575 Route 28
Harwich Port, MA

COPYRIGHT:
THE USER ACKNOWLEDGES THAT THE ARCHITECT'S DOCUMENTS ARE INSTRUMENTS OF PROFESSIONAL SERVICE AND ARE BY COMMON COPYRIGHT. THIS DOCUMENT IS THE PROPERTY OF THE ARCHITECT AND SHALL NOT BE MODIFIED, AMENDED, OR ALTERED IN ANY WAY. IT IS ISSUED FOR INFORMATION PURPOSES ONLY. THE USER AGREES TO HOLD HARMLESS, INDEMNIFY AND DEFEND THE ARCHITECT AGAINST ANY AND ALL DAMAGES, CLAIMS, AND LOSSES, INCLUDING DEFENSE COSTS, ARISING OUT OF ANY USE, REUSE OR COPYING OF THIS DOCUMENT.

NOTE: **PLANNING BOARD SUBMISSION**
05-19-22



DRAWING TITLE:

LIGHTING PLAN

REVISIONS

NO.	DATE	DESCRIPTION
△	07-13-22	GENERAL
△	08-12-22	GENERAL

DATE OF ISSUE: 05-19-22

DRAWN BY: MRH CHECKED BY: GBS

DRAWING NUMBER:

L1.1

1 LIGHTING PLAN
L1.1 SCALE: 1" = 10'-0"



TENANT SIGN LIGHTS

LIGHT FIXTURE SCHEDULE							
SYMBOL	LABEL	MANUFACTURER	DESCRIPTION	REMARKS	LAMP	WATTAGE	LUMENS
■	A	LITHONIA LIGHTING	AREA POLE LIGHT D-SERIES T4M	CUT OFF SHIELD	LED	54	6,327
◐	B	PROGRESS LIGHTING	WALL MOUNTED, WET LOCATION, TRADITIONAL FORM	GLASS, BLACK FINISH	LED	9	623
▲	C	WAC LIGHTING	ENDURACE DOUBLE SPOT LIGHT	DUAL HEAD, BLACK FINISH	LED	30	965
—	D	USLED LINEARSTAR	OUTDOOR LED SIGN LIGHTING & WALL WASHER	4' LENGTH	LED	14.8	1,507
◑	SL	MPL	MULTIPURPOSE AREA LIGHT-LED	FREE STANDING SIGN LIGHT	LED	15	1600

MA MAINLAND STATE PLANE GRID (MAD 1983)

PROJECT:

575 Route 28
Harwich Port, MA

COPYRIGHT:

THE USER ACKNOWLEDGES THAT THE ARCHITECT'S DOCUMENTS ARE INSTRUMENTS OF PROFESSIONAL SERVICE AND ARE BY COMMON COPYRIGHT. THIS DOCUMENT IS THE PROPERTY OF THE ARCHITECT AND SHALL NOT BE MODIFIED, AMENDED, OR ALTERED IN ANY WAY. IT IS ISSUED FOR INFORMATION PURPOSES ONLY. THE USER AGREES TO HOLD HARMLESS, INDEMNIFY AND DEFEND THE ARCHITECT AGAINST ANY AND ALL DAMAGES, CLAIMS, AND LOSSES, INCLUDING DEFENSE COSTS, ARISING OUT OF ANY USE, REUSE OR COPYING OF THIS DOCUMENT.

NOTE: **PLANNING BOARD
SUBMISSION
05-19-22**



DRAWING TITLE:

**SECOND
FLOOR PLAN**

REVISIONS

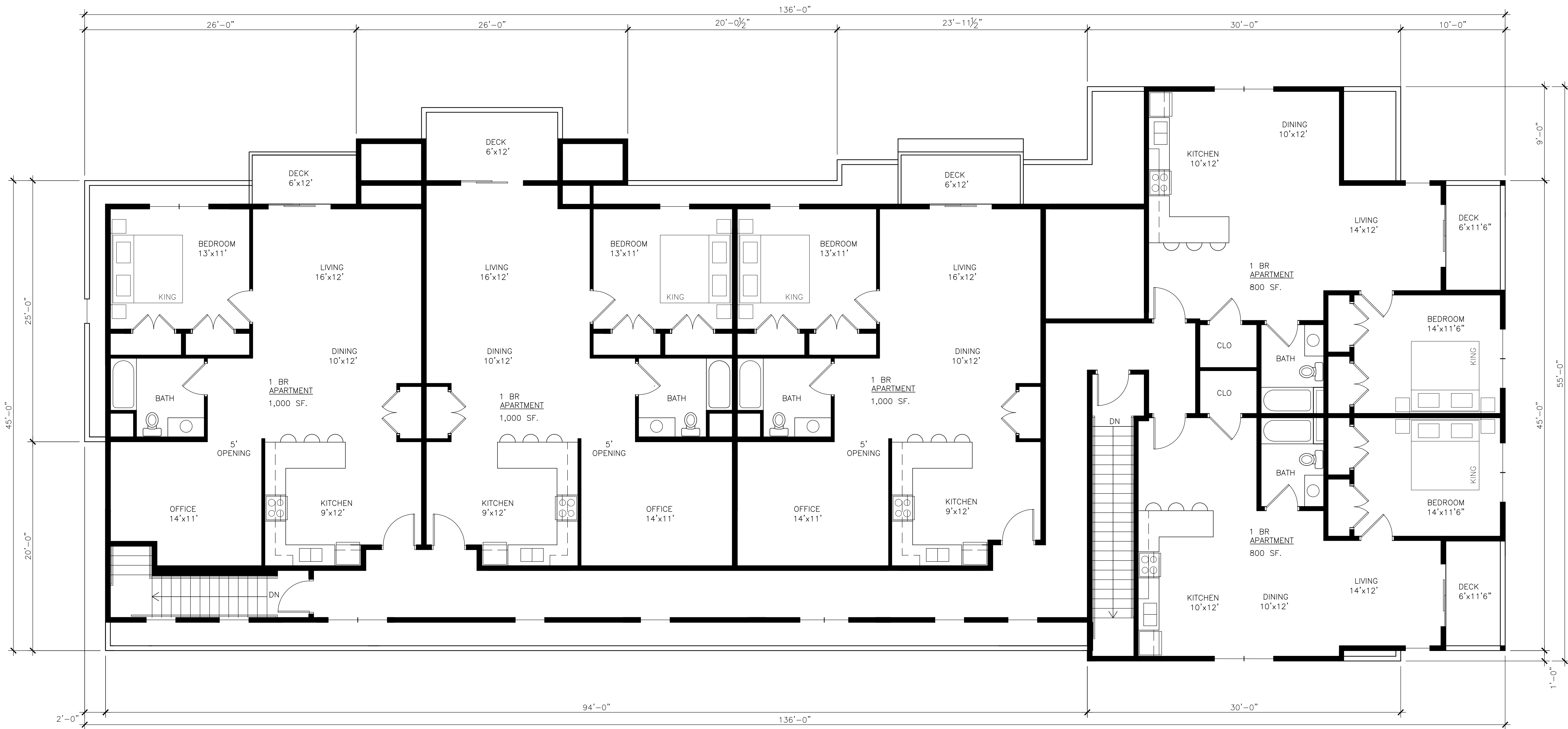
NO.	DATE	DESCRIPTION
△	06-06-22	GENERAL
△	08-12-22	GENERAL

DATE OF ISSUE **05-19-22**

DRAWN BY: **MRH** CHECKED BY: **GBS**

DRAWING NUMBER:

A1.1



1 SECOND FLOOR
A1.1 SCALE: 3/16"=1'-0"

FIRST FLOOR	6,485 SF.
SECOND FLOOR	5,455 SF.
TOTAL	11,940 SF. GROSS



PROJECT:

575 Route 28
Harwich Port, MA

COPYRIGHT:
THE USER ACKNOWLEDGES THAT THE ARCHITECT'S DOCUMENTS ARE INSTRUMENTS OF PROFESSIONAL SERVICE AND ARE BY COMMON COPYRIGHT. THIS DOCUMENT IS THE PROPERTY OF THE ARCHITECT AND SHALL NOT BE MODIFIED, AMENDED, OR ALTERED IN ANY WAY. IT IS ISSUED FOR INFORMATION PURPOSES ONLY. THE USER AGREES TO HOLD HARMLESS, INDEMNIFY AND DEFEND THE ARCHITECT AGAINST ANY AND ALL DAMAGES, CLAIMS, AND LOSSES, INCLUDING DEFENSE COSTS, ARISING OUT OF ANY USE, REUSE OR COPYING OF THIS DOCUMENT.

NOTE: **PLANNING BOARD
SUBMISSION
05-19-22**



DRAWING TITLE:

**BUILDING
ELEVATIONS**

REVISIONS

NO.	DATE	DESCRIPTION
△ 1	08-12-22	GENERAL

DATE OF ISSUE: 05-19-22

DRAWN BY: MRH CHECKED BY: GBS

DRAWING NUMBER:

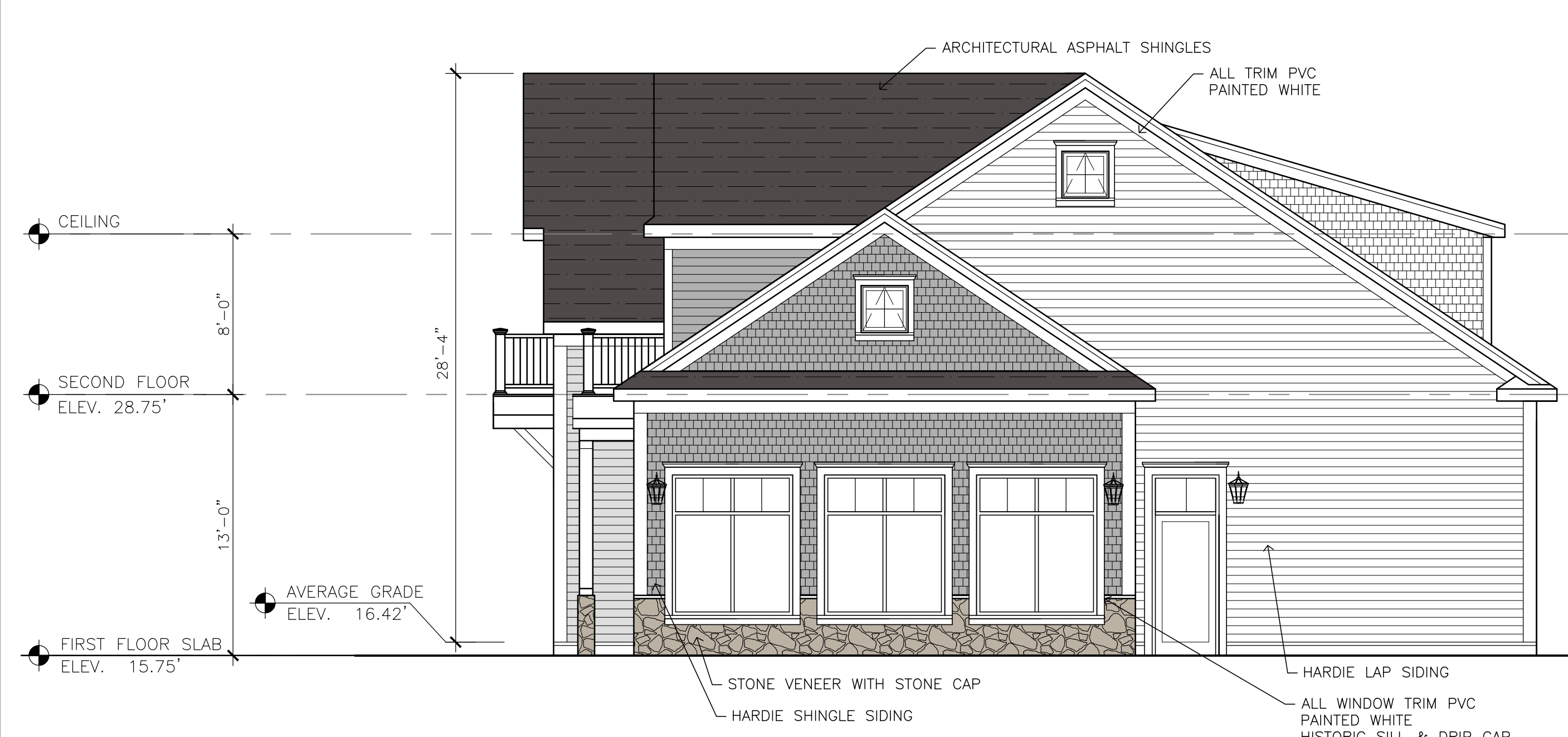
A1.3



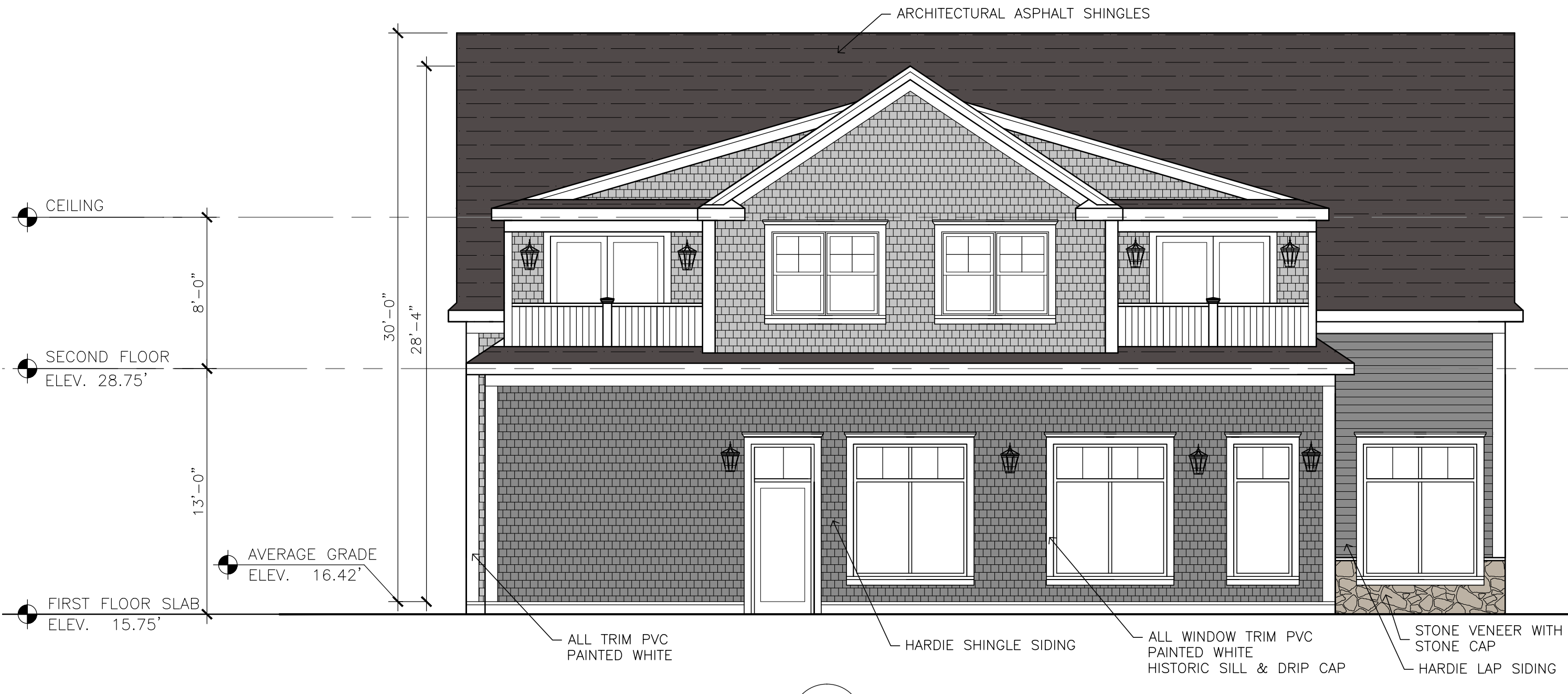
1 FRONT STREET ELEVATION (NORTH)
A1.3 SCALE: 3/16"=1'-0"



2 REAR PARKING ELEVATION (SOUTH)
A1.3 SCALE: 3/16"=1'-0"



3 LEFT ELEVATION (WEST)
A1.3 SCALE: 3/16"=1'-0"



4 RIGHT ELEVATION (EAST)
A1.3 SCALE: 3/16"=1'-0"