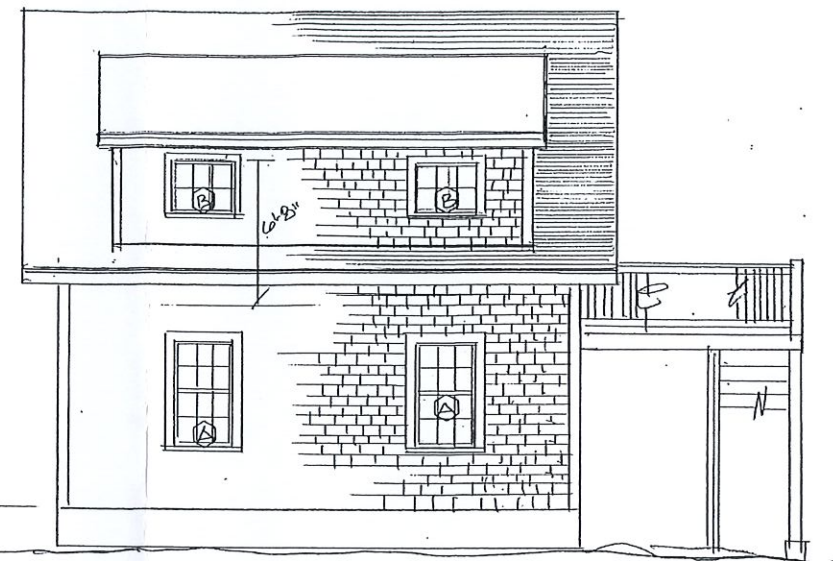
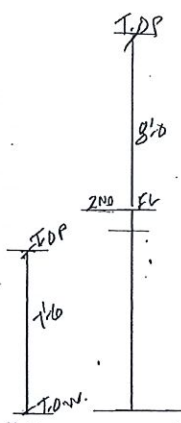


388 BANK STREET PROPOSAL #1  
 GEORGE LONGO DESIGN INC. 603-7448220

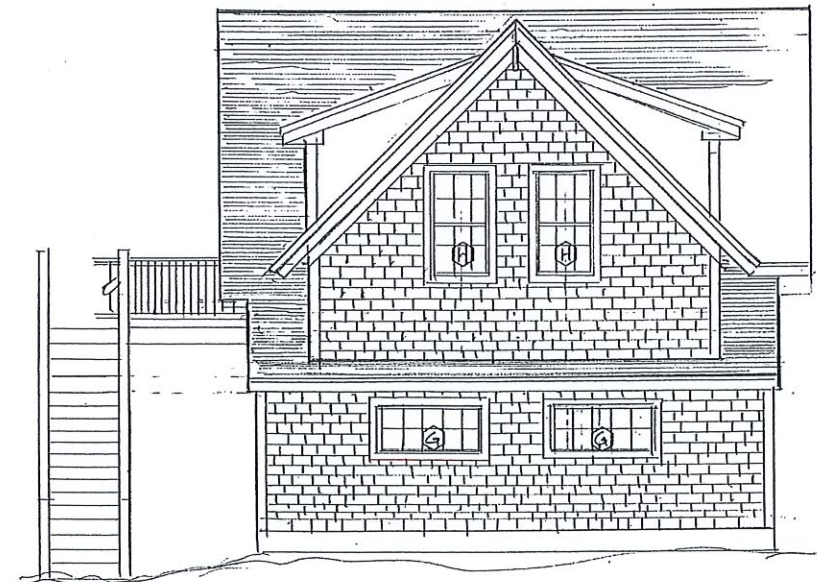
RECEIVED  
 TOWN CLERK  
 HARWICH, MA  
 2022 DEC 29 P 1:10



WEST ELEVATION  
 1/4"=1'-0"



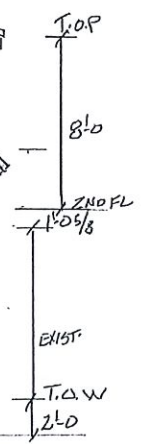
NORTH ELEVATION  
 1/4"=1'-0"



SOUTH ELEVATION  
 1/4"=1'-0"

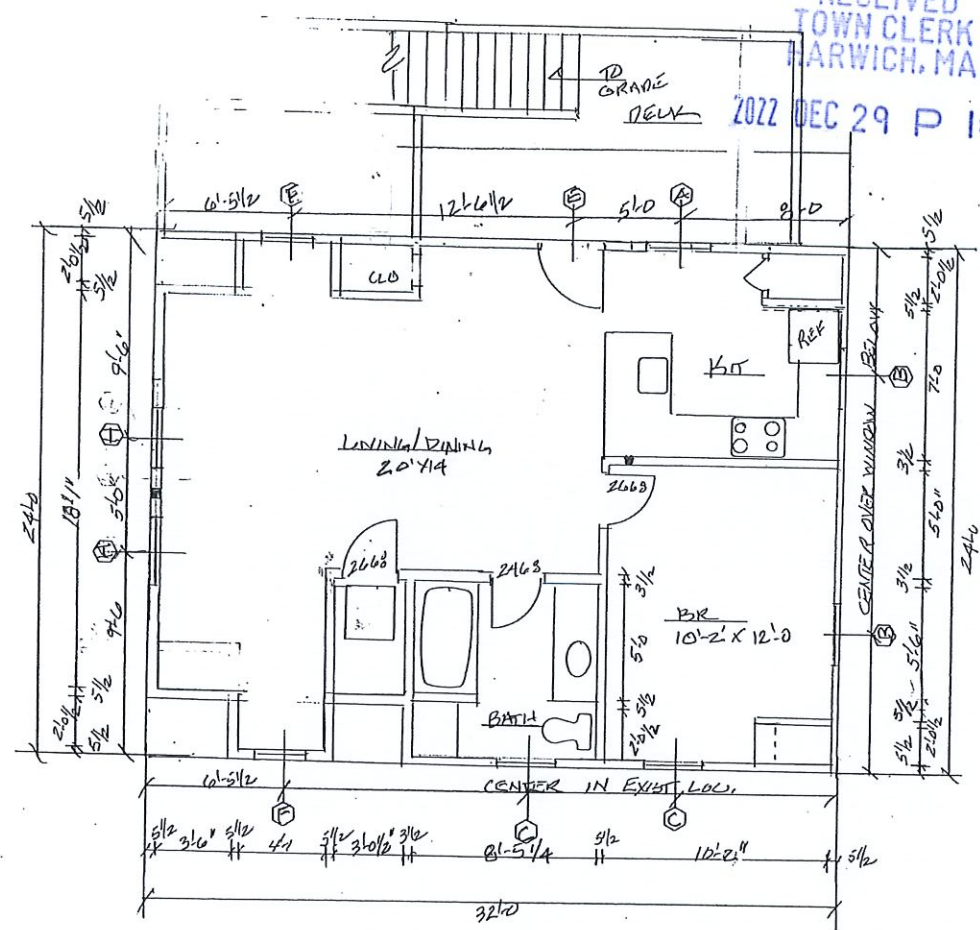


EAST ELEVATION  
 1/4"=1'-0"

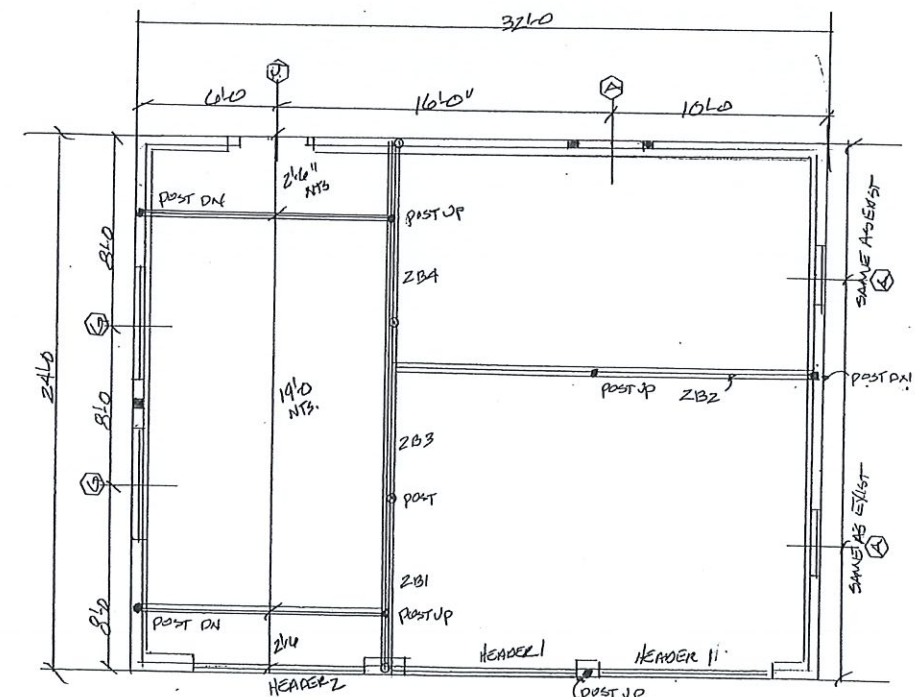


GENERAL NOTES:  
 ALL LOCAL CODES SHALL BE FOLLOWED.  
 STRUCTURAL ENGINEERING BY OTHERS.  
 EXIST. MEASUREMENTS TO BE FIELD VERIFIED.  
 THIS PLAN HAS EXIST. BARN RAISED 2'± TO ALLOW FOR 2ND FLOOR ABOVE STEP APP.

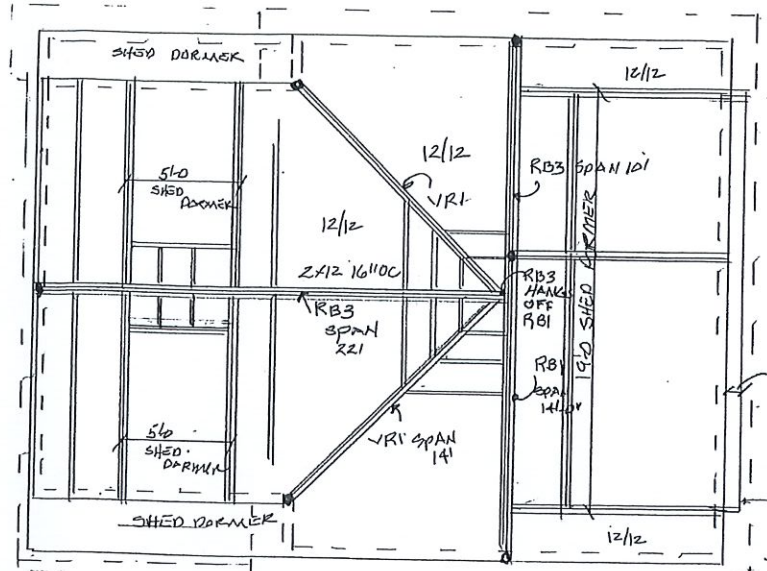
RECEIVED  
TOWN CLERK  
HARWICH, MA  
2022 DEC 29 P 1:10



SECOND FLOOR PLAN  
1/4" = 1'-0"

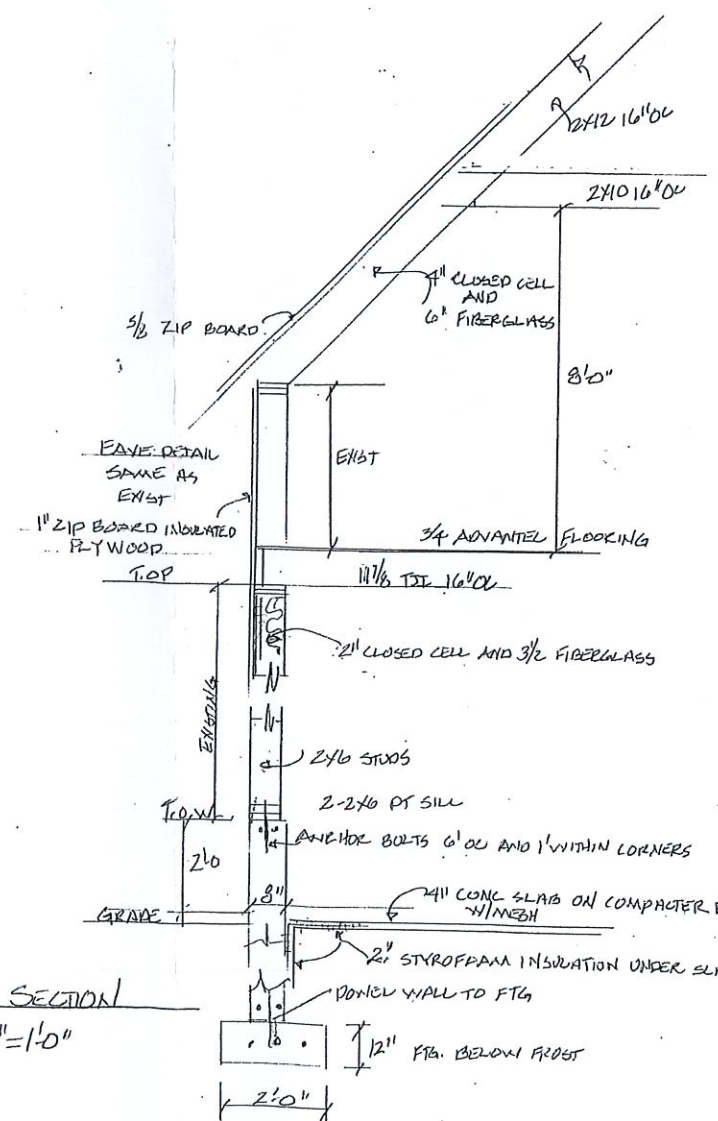


1st FLOOR 1/4" = 1'-0" & 2nd FLOOR FRAMING

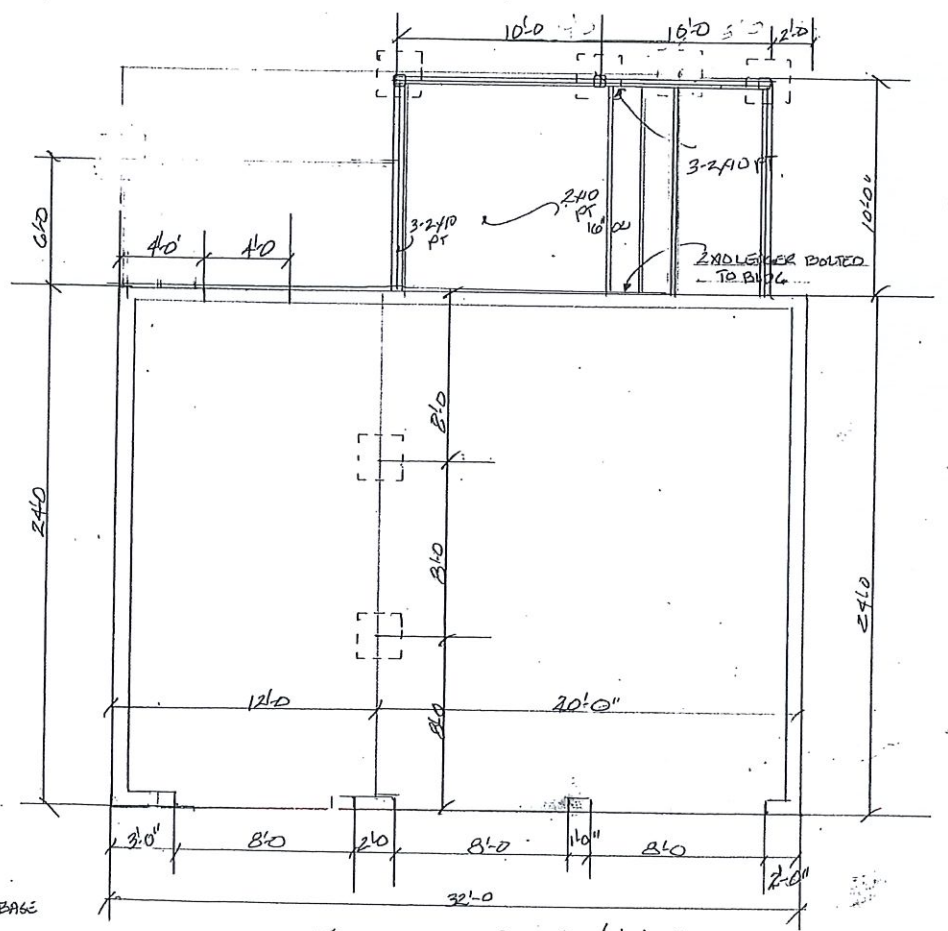


ROOF PLAN 1/4" = 1'-0"

- WINDOW/EXTERIOR DOOR
- ⊕ ANDERSEN WPH 2846 R.O 2'-10 1/8" X 4'-2 3/8"
  - ⊖ A 281 R.O 2'-8" X 2'-4 9/8"
  - ⊙ CX 145 WITH CHECK RAIL R.O 2'-8" X 4'-5 3/8"
  - ⊕ FWH 3163 AR R.O 3'-1" X
  - ⊖ WPH 2832 R.O 2'-2 1/8" X 3'-4 7/8"
  - ⊙ WTR 4011 R.O 4'-11 7/8" X 2'-1 1/2"
  - ⊕ WHP 2846 R.O 2'-10 1/8" X 4'-3 3/8"
  - ⊖ 3068 9 LITE FIBER GLASS DOOR



WALL SECTION  
1/2" = 1'-0"



FOUNDATION PLAN 1/4" = 1'-0"

388 BANK ST. HARWICH, MA