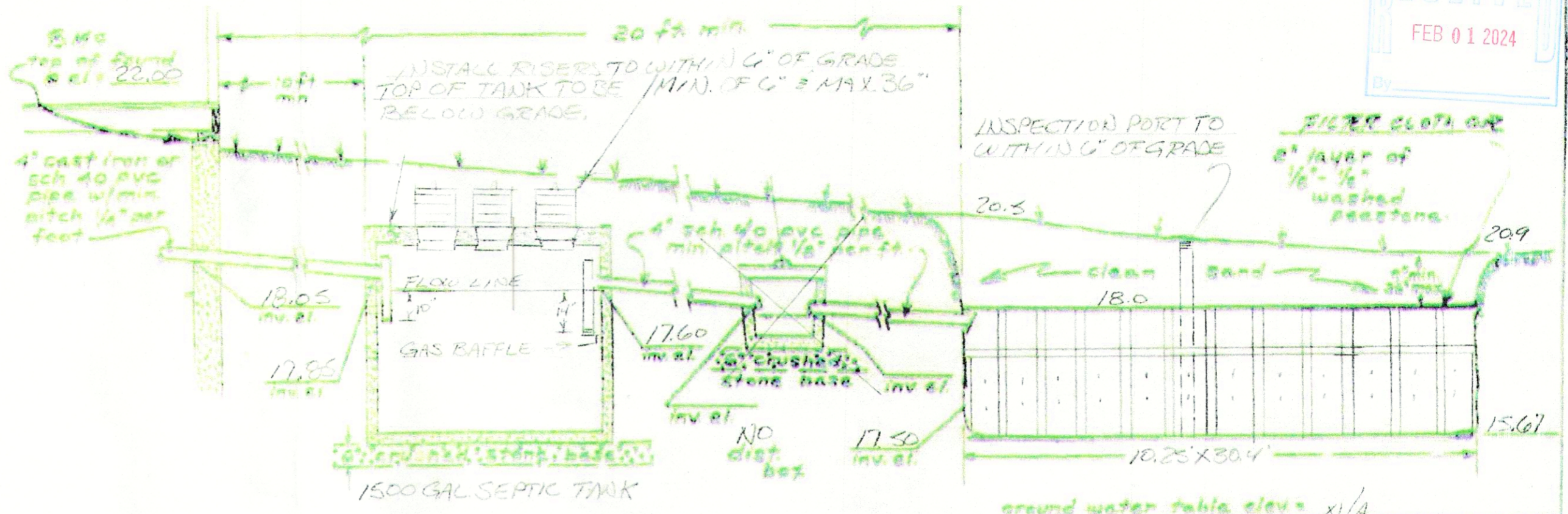


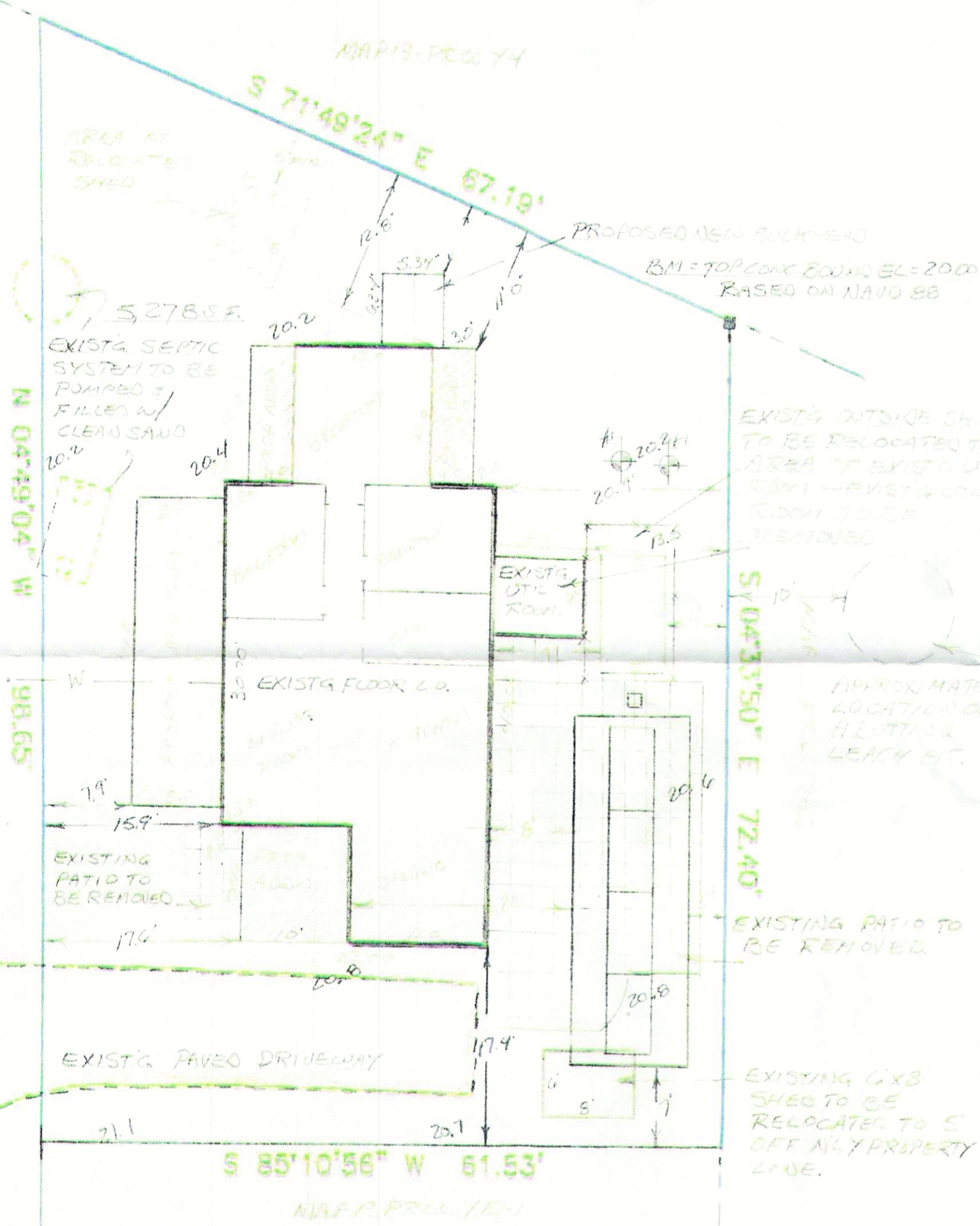
RH-2	REQUIRED	EXISTING	PROPOSED
	40000 S.F.	5,278 S.F.	5,278 S.F.
	150'	98.65'	98.65'
	25'	15.90'	
	20'	12.8 ± 17.4	
	20'		
AGE	30%		
	35%		

PANEL # 25001606125-EFF 7/16/2011
 DESIGNED BY: EDWARD J. & CAROL FLEMING
 100 W. HOLDEN, MA 01520
 BK 1188Y PG 338 & L.C. CERT. 151119



SEWAGE SYSTEM PROFILE
 not to scale

ground water table elev = N/A
 bottom test hole elev = 9.6
 S.A.S TO CONSIST OF (4) INFILTRATOR
 3050 UNITS w/ 3" STONE ON SIDES &
 1" ENDS.



DESIGN DATA

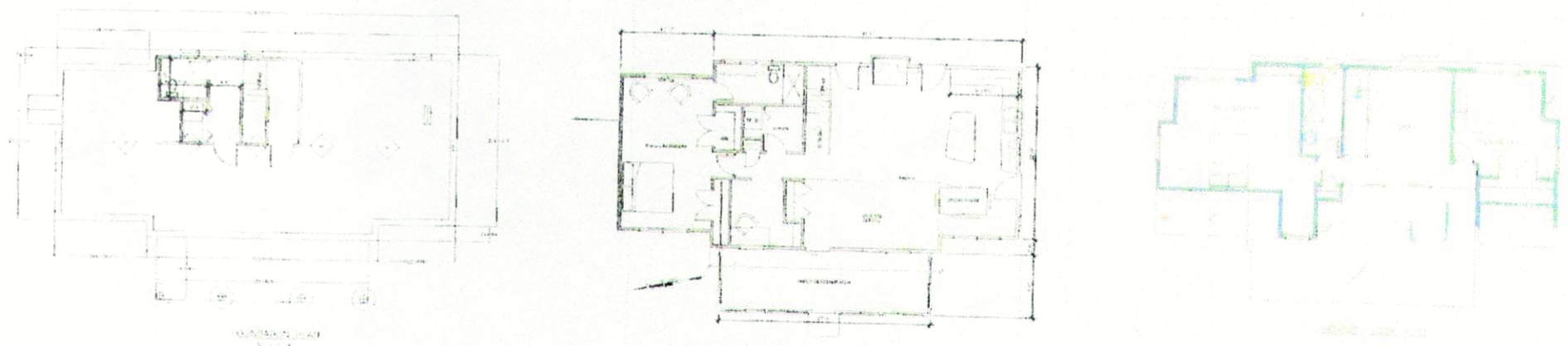
NUMBER OF BEDROOMS:	3
GARAGE DISPOSAL UNIT:	N/A
TOTAL ESTIMATED FLOW (110 GAL/BR/DAY x 3 BR):	330 GAL/DAY
REQ SEPTIC TANK CAPACITY:	660 GAL
ACTUAL SEPTIC TANK SIZE:	1500 GAL
LEACHING AREA REQUIREMENTS:	
SIDEWALL: $74(210.25 - 30.7)18 = 110.1$ GAL	
+ BOTTOM: $24(225)(35.4) = 230.6$ "	
TOTAL LEACHING CAPACITY:	340.7 GAL
RESERVE LEACHING CAPACITY:	N/A GAL

TEST HOLE LOG

TEST DATE: SEPT 5 2023
 WITNESSED BY: CHRIS SCHNEIDER
 PERCOLATION RATE: 42 MIN/INCH
 PERFORMED BY: DAVID MASON, CSE

	HOLE 1	HOLE 2
1'	10YR3/4	10YR3/4
2'	10YR3/4	10YR3/4
3'	10YR3/4	10YR3/4
4'	10YR3/4	10YR3/4
5'	10YR3/4	10YR3/4
6'	10YR3/4	10YR3/4
7'	10YR3/4	10YR3/4
8'	10YR3/4	10YR3/4
9'	10YR3/4	10YR3/4
10'	10YR3/4	10YR3/4
11'	10YR3/4	10YR3/4
12'	10YR3/4	10YR3/4
13'	10YR3/4	10YR3/4
14'	10YR3/4	10YR3/4
15'	10YR3/4	10YR3/4
16'	10YR3/4	10YR3/4
17'	10YR3/4	10YR3/4
18'	10YR3/4	10YR3/4
19'	10YR3/4	10YR3/4
20'	10YR3/4	10YR3/4
21'	10YR3/4	10YR3/4
22'	10YR3/4	10YR3/4
23'	10YR3/4	10YR3/4
24'	10YR3/4	10YR3/4
25'	10YR3/4	10YR3/4
26'	10YR3/4	10YR3/4
27'	10YR3/4	10YR3/4
28'	10YR3/4	10YR3/4
29'	10YR3/4	10YR3/4
30'	10YR3/4	10YR3/4
31'	10YR3/4	10YR3/4
32'	10YR3/4	10YR3/4
33'	10YR3/4	10YR3/4
34'	10YR3/4	10YR3/4
35'	10YR3/4	10YR3/4
36'	10YR3/4	10YR3/4
37'	10YR3/4	10YR3/4
38'	10YR3/4	10YR3/4
39'	10YR3/4	10YR3/4
40'	10YR3/4	10YR3/4
41'	10YR3/4	10YR3/4
42'	10YR3/4	10YR3/4
43'	10YR3/4	10YR3/4
44'	10YR3/4	10YR3/4
45'	10YR3/4	10YR3/4
46'	10YR3/4	10YR3/4
47'	10YR3/4	10YR3/4
48'	10YR3/4	10YR3/4
49'	10YR3/4	10YR3/4
50'	10YR3/4	10YR3/4
51'	10YR3/4	10YR3/4
52'	10YR3/4	10YR3/4
53'	10YR3/4	10YR3/4
54'	10YR3/4	10YR3/4
55'	10YR3/4	10YR3/4
56'	10YR3/4	10YR3/4
57'	10YR3/4	10YR3/4
58'	10YR3/4	10YR3/4
59'	10YR3/4	10YR3/4
60'	10YR3/4	10YR3/4
61'	10YR3/4	10YR3/4
62'	10YR3/4	10YR3/4
63'	10YR3/4	10YR3/4
64'	10YR3/4	10YR3/4
65'	10YR3/4	10YR3/4
66'	10YR3/4	10YR3/4
67'	10YR3/4	10YR3/4
68'	10YR3/4	10YR3/4
69'	10YR3/4	10YR3/4
70'	10YR3/4	10YR3/4
71'	10YR3/4	10YR3/4
72'	10YR3/4	10YR3/4
73'	10YR3/4	10YR3/4
74'	10YR3/4	10YR3/4
75'	10YR3/4	10YR3/4
76'	10YR3/4	10YR3/4
77'	10YR3/4	10YR3/4
78'	10YR3/4	10YR3/4
79'	10YR3/4	10YR3/4
80'	10YR3/4	10YR3/4
81'	10YR3/4	10YR3/4
82'	10YR3/4	10YR3/4
83'	10YR3/4	10YR3/4
84'	10YR3/4	10YR3/4
85'	10YR3/4	10YR3/4
86'	10YR3/4	10YR3/4
87'	10YR3/4	10YR3/4
88'	10YR3/4	10YR3/4
89'	10YR3/4	10YR3/4
90'	10YR3/4	10YR3/4
91'	10YR3/4	10YR3/4
92'	10YR3/4	10YR3/4
93'	10YR3/4	10YR3/4
94'	10YR3/4	10YR3/4
95'	10YR3/4	10YR3/4
96'	10YR3/4	10YR3/4
97'	10YR3/4	10YR3/4
98'	10YR3/4	10YR3/4
99'	10YR3/4	10YR3/4
100'	10YR3/4	10YR3/4

- NOTES**
- 1) ALL WORKMANSHIP AND MATERIALS SHALL CONFORM TO D.E.P. TITLE 5 AND THE TOWN OF HARWICH RULES AND REGULATIONS FOR SUBSURFACE DISPOSAL OF SANITARY SEWAGE.
 - 2) COMPLIANCE WITH ZONING REGULATIONS SHALL BE DETERMINED BY BUILDING INSPECTOR / COMMISSIONER.
 - 3) EXISTING AND FINAL GRADES SHALL REMAIN ESSENTIALLY THE SAME.
 - 4) INSTALLER TO VERIFY LOCATION OF ALL UTILITIES, INVERTS, & SEPTIC COMPONENTS PRIOR TO CONSTRUCTION.
 - 5) ALL SYSTEM COMPONENTS TO BE MARKED WITH MAGNETIC TAPE FOR RELOCATION PRIOR TO BACKFILL.



PROPOSED NEW FLOOR PLANS
 DATE APPROVED: _____
 _____, B.D. OF HEALTH
 _____, AGENT

SITE PLAN
 Scale: 1" = 10'

- LEGEND**
- top existing spot elev = 0.0
 - existing contour = 0.0
 - top prop 2nd floor elev = 2.0
 - prop 1st floor contour = 0.0
 - test hole location = 4

SITE PLAN OF PROPOSED CONSTRUCTION
 LOCATION: #41 ZYLPHA ROAD, HARWICH PORT, MA
 REFERENCE: ASSESSOR'S MAP 12, PERCL 791 - PL BK 79 PG 33-L.C. 30320-B
 PREPARED FOR: EDWARD J. & CAROL A. FLEMING
 SCALE: AS SHOWN DATE: SEPT 21, 2023
 REV. 10/12/23-S. + REV. 11/3/23-d.f.

DAN A. SPEAKMAN CONSTRUCTION
 LAND SURVEYING & TITLE I ENGINEERING DIV.
 15 SPEAK WAY, N. HARWICH, MA
 508-232-5565

Professional seals for Dan A. Speakman and David B. Mason, Commission of Health of Massachusetts.