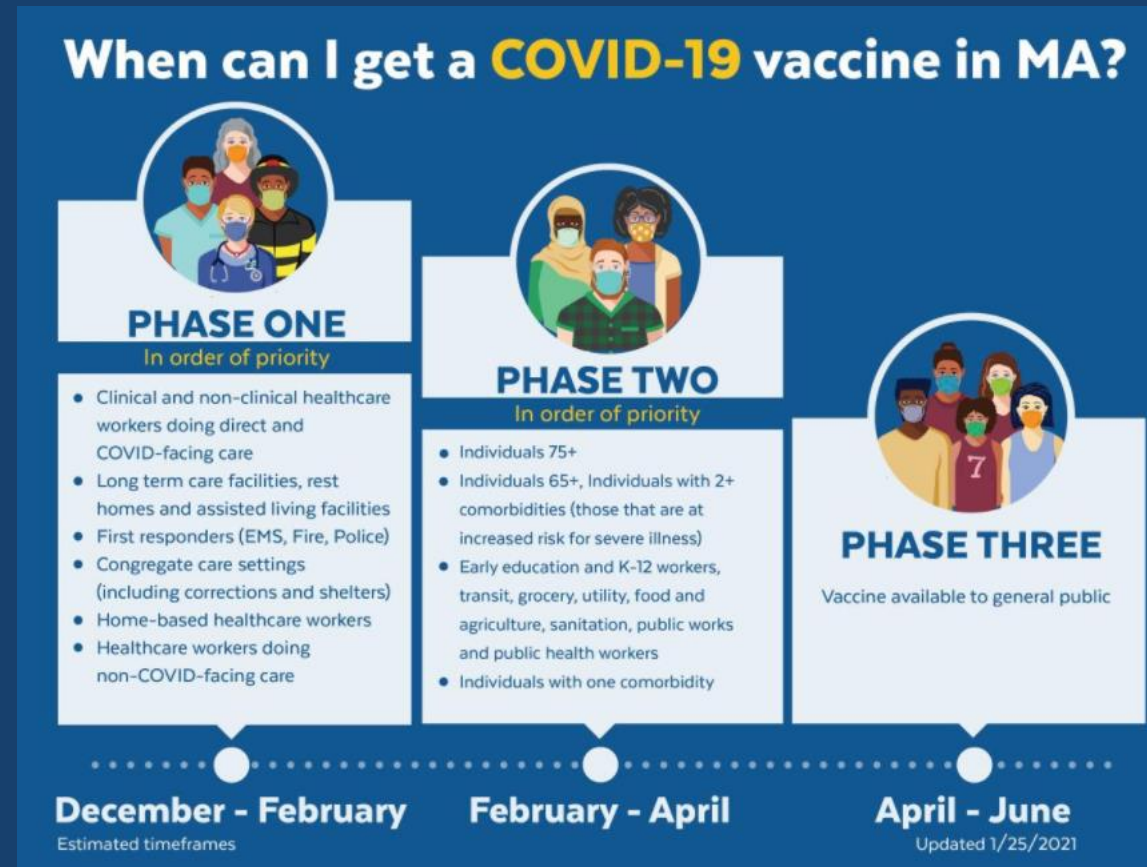


# COVID-19 VACCINE UPDATE

January 28, 2021

# WHERE WE ARE NOW-JAN. 28, 2021

- Currently finishing up Phase One groups



- Phase two will begin on February 1st

# PHASE ONE

## All phase one groups are eligible now

- Groups include:
- Both COVID and NON-COVID facing Health care workers
- First Responders
- Long-term Care staff and residents
- Home-based health care workers
- Congregate Care residents and staff

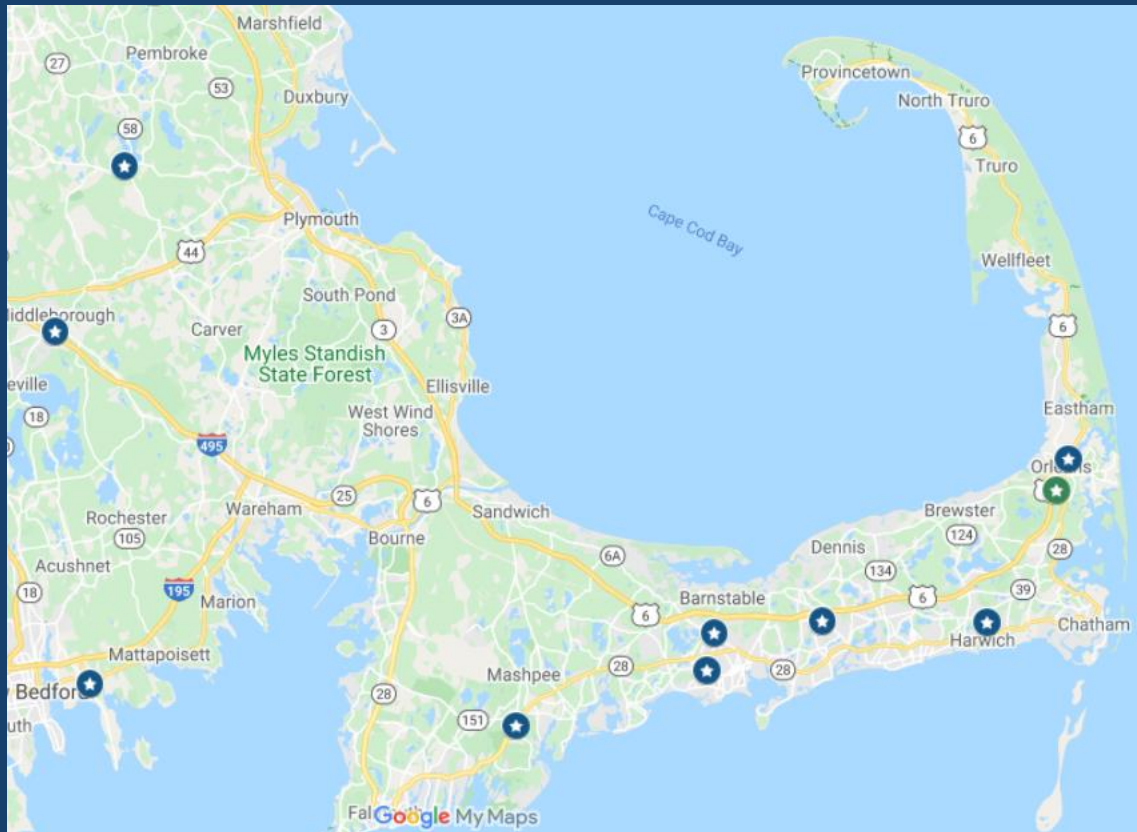
## More information:

- For a detailed list of eligible professionals and residents, please visit:
- <https://www.mass.gov/info-details/when-can-i-get-the-covid-19-vaccine#phase-1->

# HOW DO PHASE ONE RESIDENTS GET A VACCINE

- Appointments are required for any vaccination site
- Check with your employer to see if they are offering shots “in-house”
- Go online and find a vaccination site:
- <https://www.mass.gov/info-details/covid-19-vaccine-locations-for-individuals-in-phase-1>
- Download the self-attestation Form and bring it with you to the clinic
- <https://www.mass.gov/doc/covid-19-massachusetts-vaccination-attestation-form-english-1262021/download>

# PHASE ONE VACCINATION SITE MAP



Green stars are REGIONAL clinics

Blue stars are PHARMACIES

Red stars are MASS VACCINATION SITES

Yellow stars are local/restricted sites

# PHASE TWO

BEGINS FEBRUARY 1, 2021

# PHASE TWO GROUPS IN ORDER OF PRIORITY

## Group one:

- Individuals age 75 +

## Group Two:

- Individuals age 65+
- individuals with 2+ comorbidities (only those conditions listed as at *increased* risk for severe illness )

Cancer

Chronic kidney disease

COPD (chronic obstructive pulmonary disease)

Down Syndrome

Heart conditions, such as heart failure, coronary artery disease, or cardiomyopathies

Immunocompromised state (weakened immune system) from solid organ transplant

Obesity (body mass index [BMI] of 30 kg/m<sup>2</sup> or higher but < 40 kg/m<sup>2</sup>)

Severe Obesity (BMI ≥ 40 kg/m<sup>2</sup>)

Pregnancy

Sickle cell disease

Smoking

Type 2 diabetes mellitus

# HOW DO PHASE TWO RESIDENTS GET A VACCINE

- Appointments are required for any vaccination site
- Go online and find a vaccination site:
  - <https://www.mass.gov/covid-19-vaccine>
- Download the self-attestation Form to bring to the site with you
  - <https://www.mass.gov/doc/covid-19-massachusetts-vaccination-attestation-form-english-1262021/download>



# PHASE TWO GROUPS CONTINUED

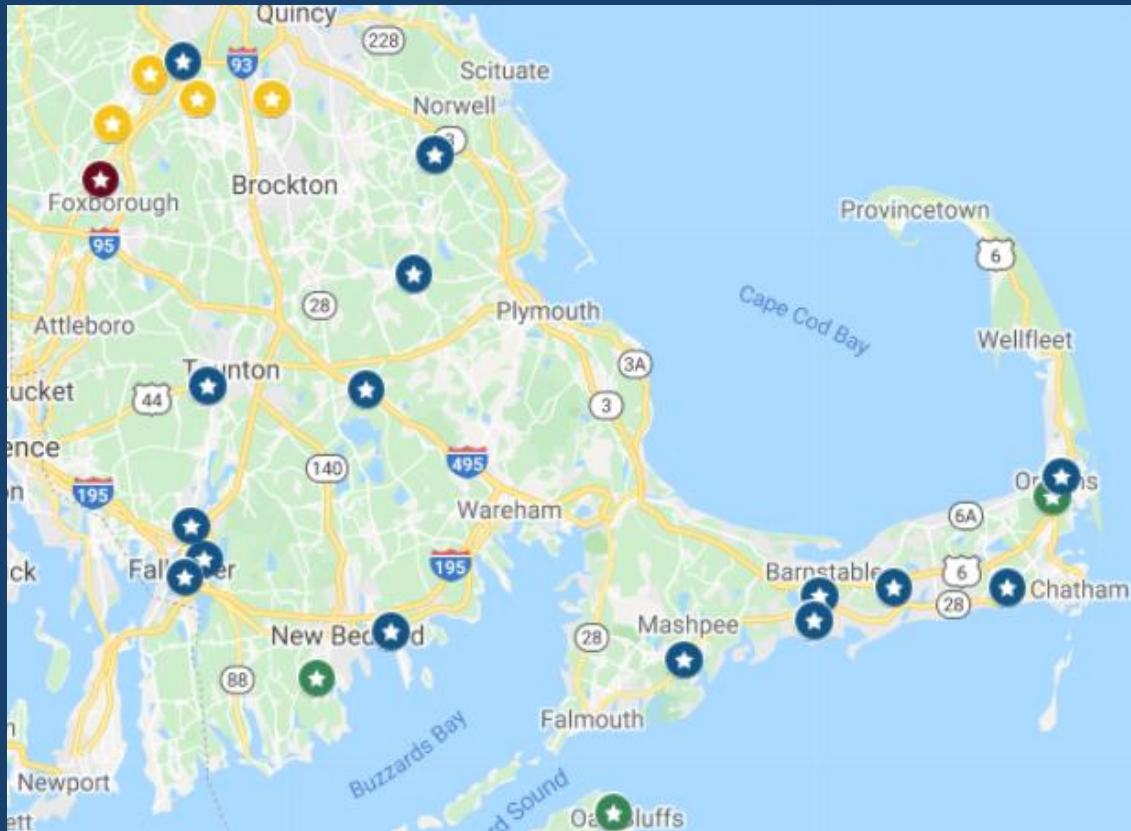
- Vaccination sites for Phase 2 will be shown on the vaccine map as soon as possible. Sites are added frequently, so check back often.

<https://www.mass.gov/covid-19-vaccine>

- Once the first two priority groups in Phase Two have been given vaccinations, the next priority group will be eligible.

- <https://www.mass.gov/info-details/when-can-i-get-the-covid-19-vaccine>

# PHASE TWO VACCINATION SITE MAP



Green stars are REGIONAL clinics

Blue stars are PHARMACIES

Red stars are MASS VACCINATION SITES

Yellow stars are local/restricted sites

# VACCINE APPOINTMENTS

- Stop and Shop-both Harwich and Orleans
  - <https://sit.stopandshop.com/pages/ss-pharmacy>
- CVS-South Yarmouth
  - <https://www.cvs.com/immunizations/covid-19-vaccine>
- Regional Clinics and Mass Vaccination Sites
  - <http://maimmunizations.org/>

# TOWN RUN CLINICS

- The Town of Harwich and Barnstable County are both ready, willing and able to run vaccine clinics for COVID. We have a plan and plenty of people to staff the clinics. The reason we are not able to schedule clinics at this point is due to vaccine allocation.
- The Town of Harwich uses both Barnstable County and the VNA to provide vaccines to our residents. These entities are our “providers”. The Department of Public Health has put a cap on vaccine allocations to providers due to limited availability. Each provider is capped at 100 doses of the Moderna Vaccine or 975 doses of the Pfizer vaccine PER WEEK.
- Barnstable County will first hold regional clinics and then as more vaccine becomes available, town specific clinics will be held. This is not expected until March.

# PHASE TWO CONTINUED-IN ORDER OF PRIORITY

- Early education, K-12, transit, grocery, utility, food and agriculture, restaurant and cafe workers;
- Employees across the food, beverages, agriculture, consumer goods, retail, and foodservice sectors;
- Meatpackers;
- Sanitation, public works and public health workers;
- Vaccine development workers;
- Food pantry workers and volunteers;
- Transit/transportation: Uber/Lyft/ride share services/pharmacy delivery drivers, workers in the passenger ground transportation industry (e.g. paratransit for people with Disabilities, food delivery, non-urgent medical transport), Massport workers other than police;
- Convenience store workers (under grocery workers);
- Water and wastewater utility staff
- Court system workers (judges, prosecutors, defense attorney, clerks), other than court officers who are listed under first responders
- Medical supply chain workers
- Funeral directors and funeral workers
- Shipping port and terminal workers

# PHASE TWO-CONTINUED

- Court system workers (judges, prosecutors, defense attorney, clerks), other than court officers who are listed under first responders
- Medical supply chain workers
- Funeral directors and funeral workers
- Shipping port and terminal workers
  
- The last group in Phase Two includes:
  - Individuals with one [co-morbid condition](#)

# QUESTIONS AND CONCERNS

How to get more information

# ANSWERS TO SOME FAQ'S

You do not have to be a Massachusetts resident to go to a **Mass vaccination** site.

If the Town holds an individual clinic, residency will be required.

Regional Clinics will have residency restrictions.

Private clinics may have their own eligibility restrictions.

You will be turned away at a clinic site if you are not currently eligible, even if you have an appointment.

A self-attestation form is required to self-certify eligibility within each Phase.

The vaccine is free. Insurance information may be obtained to bill for administrative costs. There is no co-pay or fee to those getting the vaccine.



# HELP LINE AND WEBSITES

Most questions can be answered by visiting the [mass.gov/covid-19-vaccine](https://mass.gov/covid-19-vaccine) website.

Phases and eligibility

Clinic Site Locations

Frequently Asked Questions

Vaccine safety information

Regional Vaccine information can be found at

[barnstablecounty.org/covid-19/covid-19\\_vaccine\\_information](https://barnstablecounty.org/covid-19/covid-19_vaccine_information)

Local vaccine availability will be posted on [Harwich-ma.gov](https://harwich-ma.gov)

If you still don't find an answer to your question, please call the County Help Line at (774) 330-3001 or

The Harwich Health Department can be reached at [health@town.harwich.ma.us](mailto:health@town.harwich.ma.us)  
or by calling 508-430-7509.