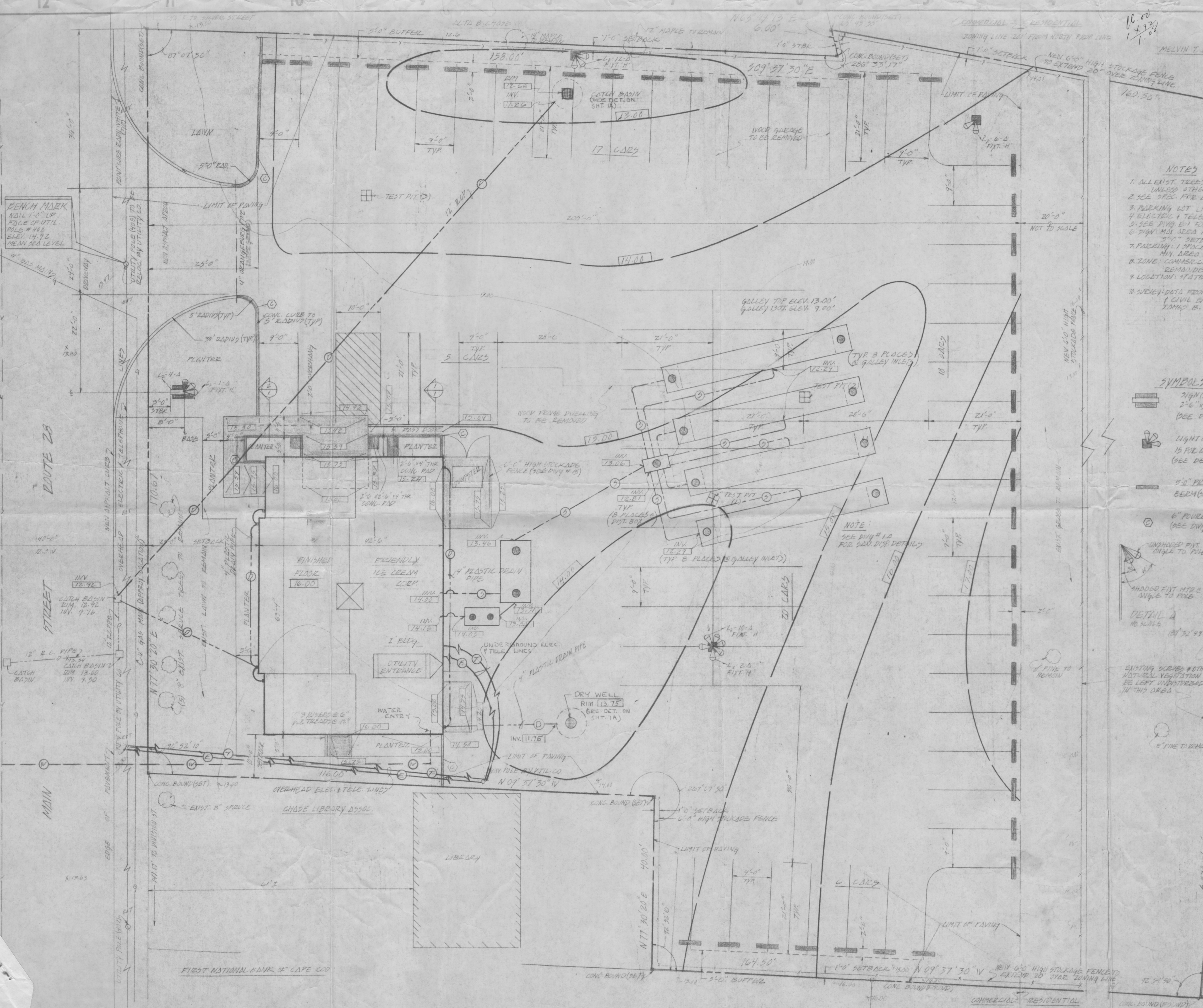
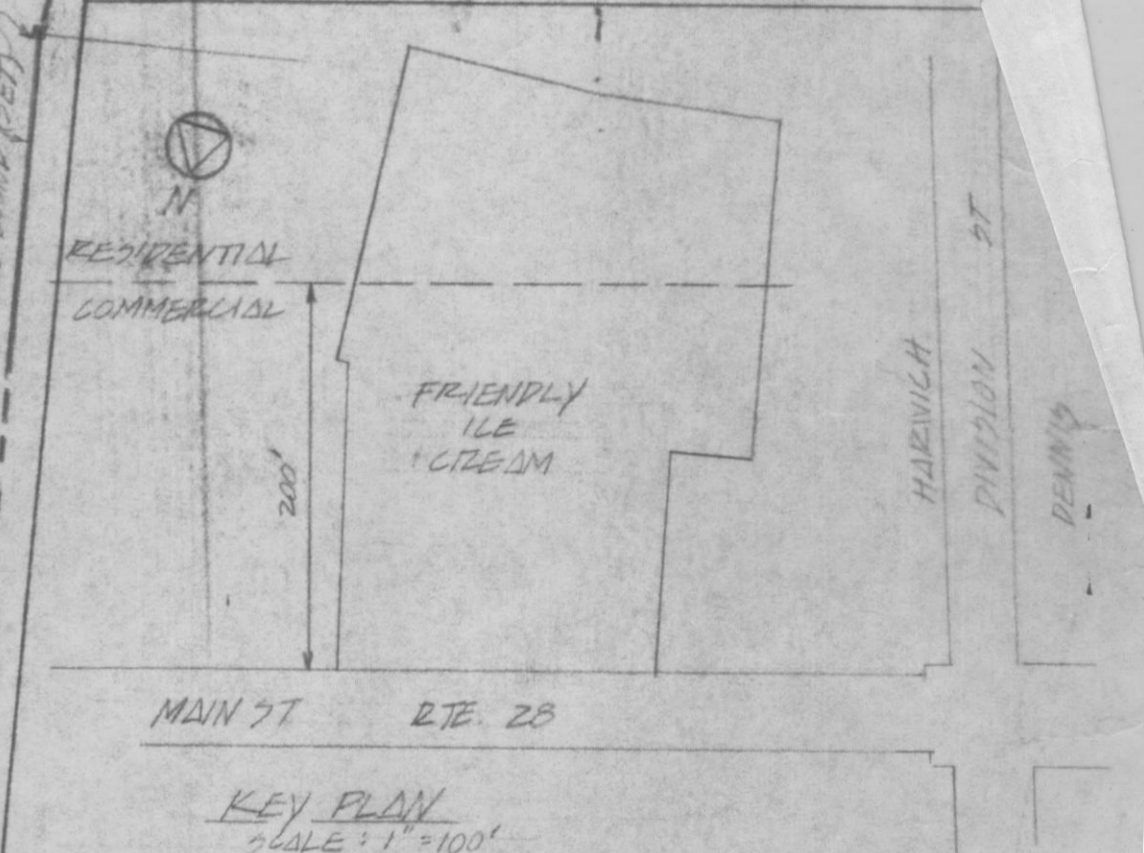


NAME	DATE	REVISION
HL	3-10-79	ADD NEW SIDE FENCE 2' FROM ZONING LINE
HL	4-7-79	REVISE NOTE #1 AND VERIFY NOTES
RJL	5-29-75	DRY WELL WAS C.B. REMOVED CONN. DRY WELL (C.B.) RELOC. WATER ENTRY, R/S/D CONN. OF C.B. BET. GREAT TRAP & SEPTIC TANK



- NOTES**
1. ALL EXIST. TREES, SHRUBS, BUSHES, 2" DIAM. SCRUBS ETC. ARE TO BE REMOVED UNLESS OTHERWISE SPECIFIED. DEBS BEYOND REAR FENCE TO BE LEFT IN NATURAL CONDITION.
 2. SEE SPEC. FOR LIGHT FIXTURE SCHEDULE (DWG. E-3) FOR LIGHT NUMBERS.
 3. PARKING LOT LIGHTING TO BE SHIELDED & DIRECTIONAL.
 4. ELECTRIC & TELEPHONE SERVICE TO BE UNDERGROUND UNLESS NOTED.
 5. SEE DWG. E-1 FOR PLANTED LIGHT FIXTURE & INSTALLATION.
 6. 2" DIA. MIN. AREA PERMITTED ON 22 FT. (BOTH SIDES) FUDGE 5'-0" 1'-0" PERPETUAL SIGN 2'-0" SETBACK.
 7. PARKING: 1 SPACE PER 75 SQ. FT. OF NET FLOOR AREA 2050 ± TO BE USED MIN. AREA REQ'D FOR PARKING STRIP 189 SQ. FT. USE 9' X 21' PARKING SPACES.
 8. ZONE: COMMERCIAL HIGHWAY (C-H-1) 200 FT. FROM NORTH PROPERTY LINE. REMAINDER ZONED RESIDENTIAL-HIGH DENSITY (R-H-1).
 9. LOCATION: STATE HIGHWAY ROUTE # 28, WEST HIGHWAY, BOSTONVILLE COUNTY MASS.
 10. SURVEY DATA FROM SURVEY PERFORMED BY HANOVER-BOWMAN WILLIAMS, INC. SURVEYORS & CIVIL ENGINEERS, 47 WEST 51st ST., BROOKTON, MASS. REG. SURVEYOR, JAMES B. WILLIAMS, LIC. # 24050.

SYMBOLS		LEGEND	
	SIGN (SEE NOTE #6) 1/4"		EXISTING GRADES
	2'-6" X 5'-0" CONG. BASE (SEE DWG #15)		FINISHED GRADES
	LIGHT ON POLE (SEE DWG #15 FOR CONG. BASE DETAIL (SEE DETAIL 'D'))		EXIST. WATER LINE
	2" PRECAST CONG. BEAM (SEE DWG #15)		NEW WATER LINE
	6" POURED CONG. CURB (SEE DWG #15)		EXIST. DRAIN LINE
	6" FINISHED PIT (SEE DWG #15) 18" DIA. TO FLOOR		NEW DRAIN LINE
	6" FINISHED PIT (SEE DWG #15) 18" DIA. TO FLOOR 30° ANGLE TO FLOOR		EXIST. ELECT. TELE. LINE
	6" FINISHED PIT (SEE DWG #15) 18" DIA. TO FLOOR 30° ANGLE TO FLOOR		NEW ELECTRIC LINE
	6" FINISHED PIT (SEE DWG #15) 18" DIA. TO FLOOR 30° ANGLE TO FLOOR		NEW TELEPHONE LINE
	6" FINISHED PIT (SEE DWG #15) 18" DIA. TO FLOOR 30° ANGLE TO FLOOR		NEW STORM SEWER LINE
	6" FINISHED PIT (SEE DWG #15) 18" DIA. TO FLOOR 30° ANGLE TO FLOOR		EXISTING GAS LINE



HELEN B. ENIGHAM

TOTAL AREA (SQ. FT.)	2050
BLDG. PLST.	50672
TOTAL PARKING	60 CARS

YARD REQUIREMENTS

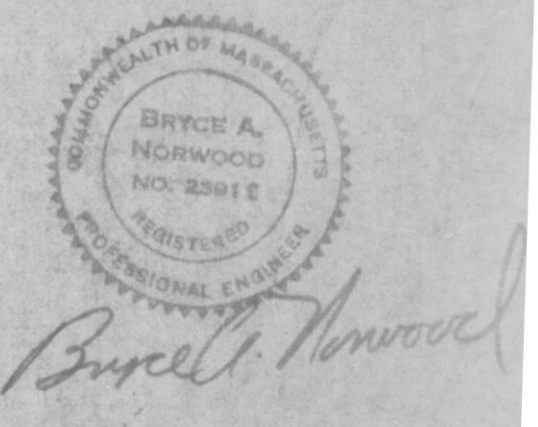
FRONT	25'-0"
SIDE	10'-0"
REAR	0'
SIDE	0'

Friendly ICE CREAM CORPORATION

WILBRAHAM, MASSACHUSETTS 01095
ROUTE 20 EAST OF SPRINGFIELD
TEL. (413) 543-2400

DR. BY ARCHER
CK. BY
DATE 7-26-79

JOE NO. 10/1/79



Bruce A. Norwood