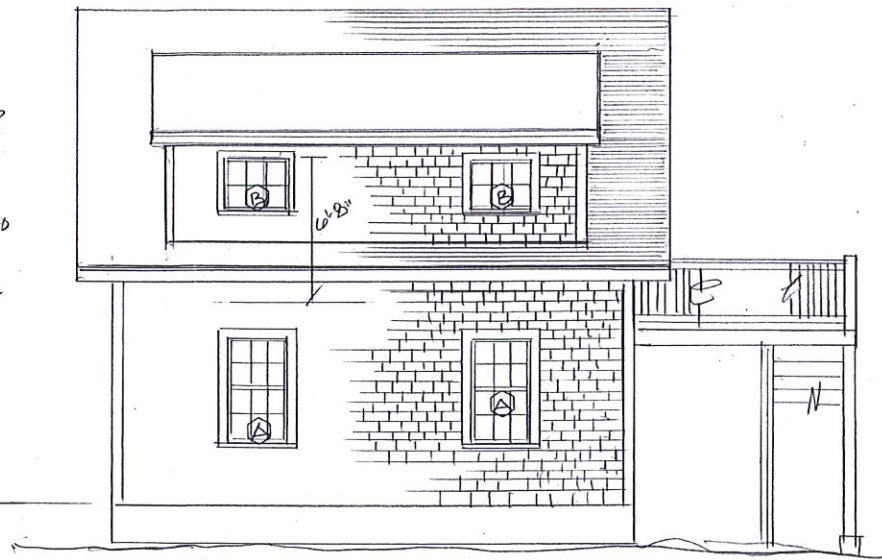


388 BANK STREET PROPOSAL #1
 GEORGE LONGO DESIGN INC. 603-7448020



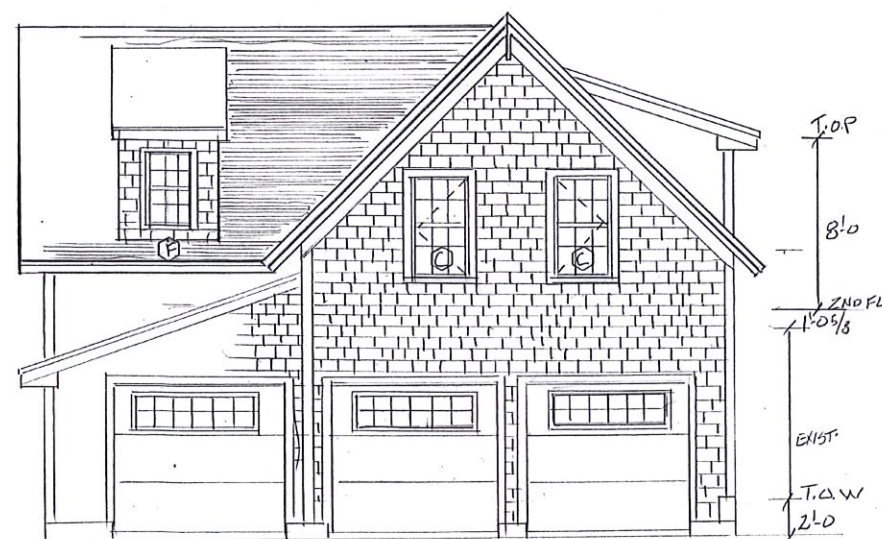
WEST ELEVATION
 1/4"=1'-0"



NORTH ELEVATION
 1/4"=1'-0"

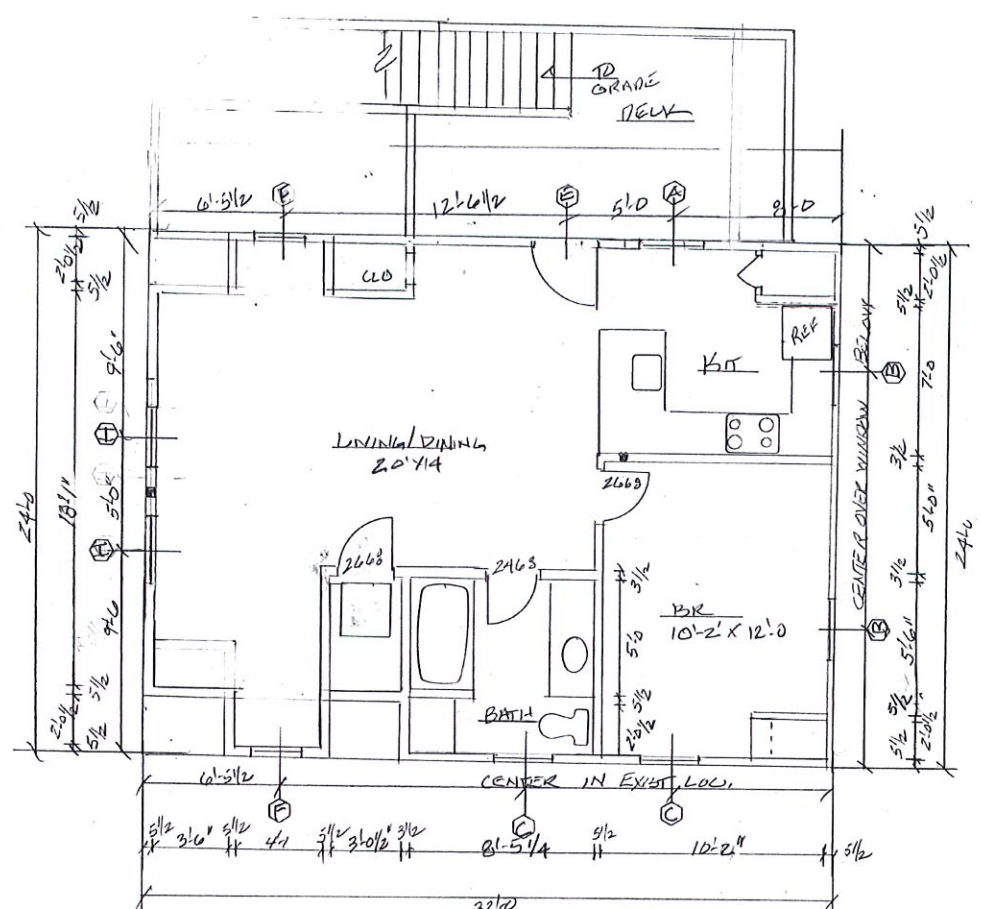


SOUTH ELEVATION
 1/4"=1'-0"

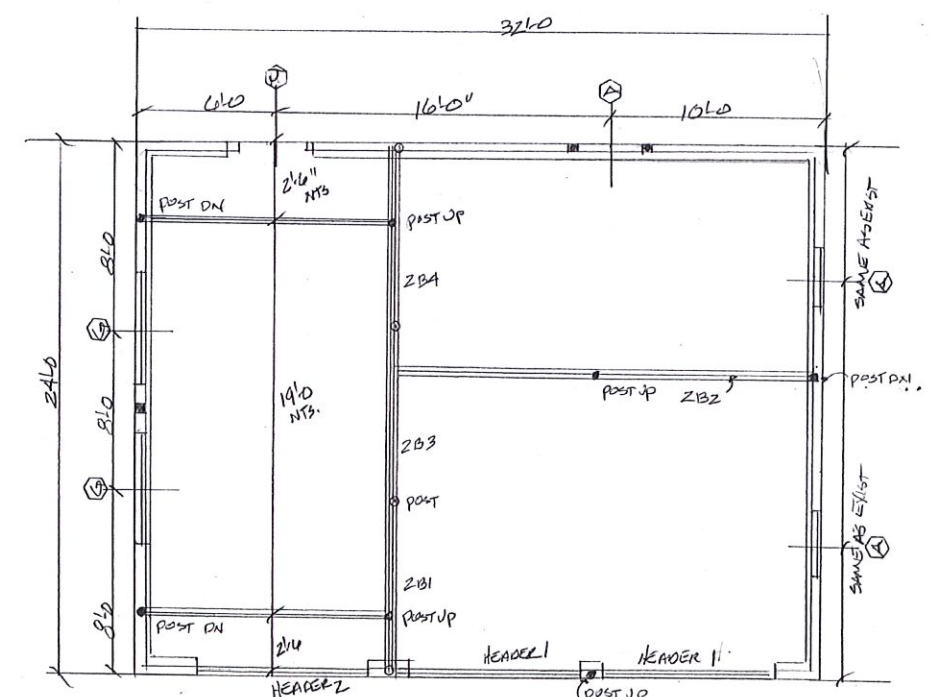


EAST ELEVATION
 1/4"=1'-0"

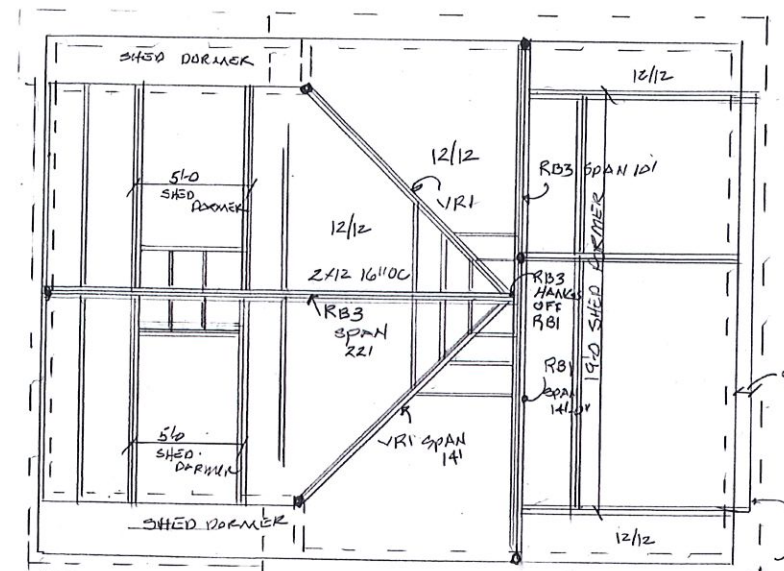
GENERAL NOTES:
 ALL LOCAL CODES SHALL BE FOLLOWED.
 STRUCTURAL ENGINEERING BY OTHERS.
 EXIST. MEASUREMENTS TO BE FIELD VERIFIED.
 THIS PLAN HAS EXIST. BARN RAISED 2'± TO
 ALLOW FOR 2ND FLOOR ABOVE STEP APP.



SECOND FLOOR PLAN
1/4" = 1'-0"



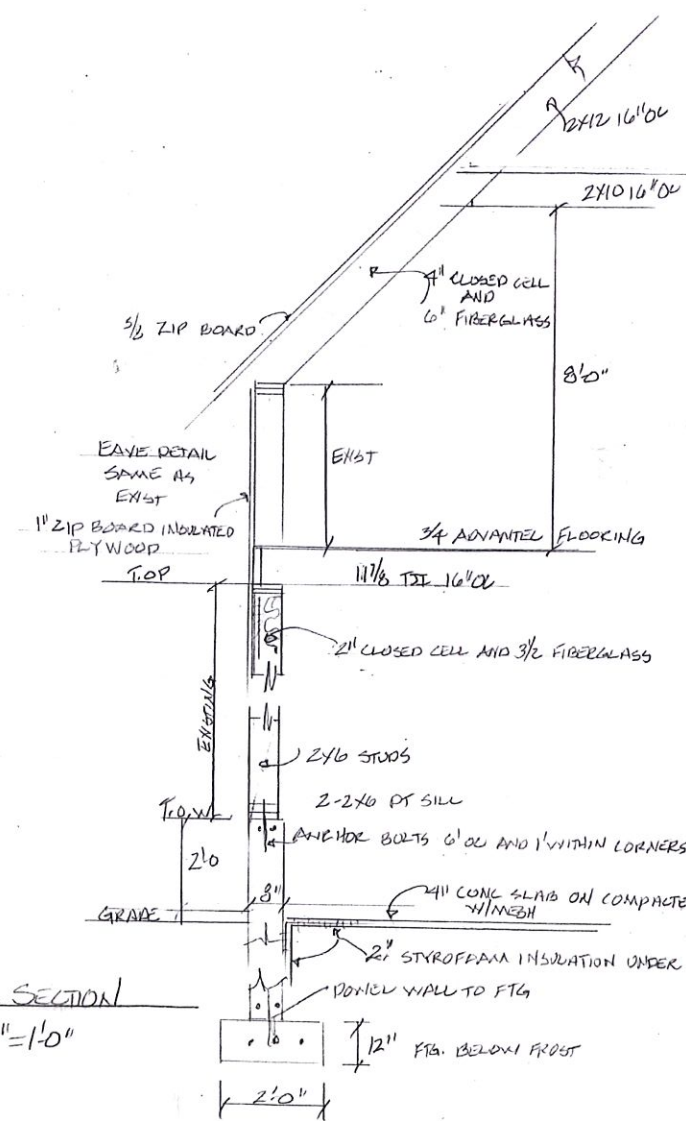
1ST FLOOR 1/4" = 1'-0" & 2ND FLOOR FRAMING



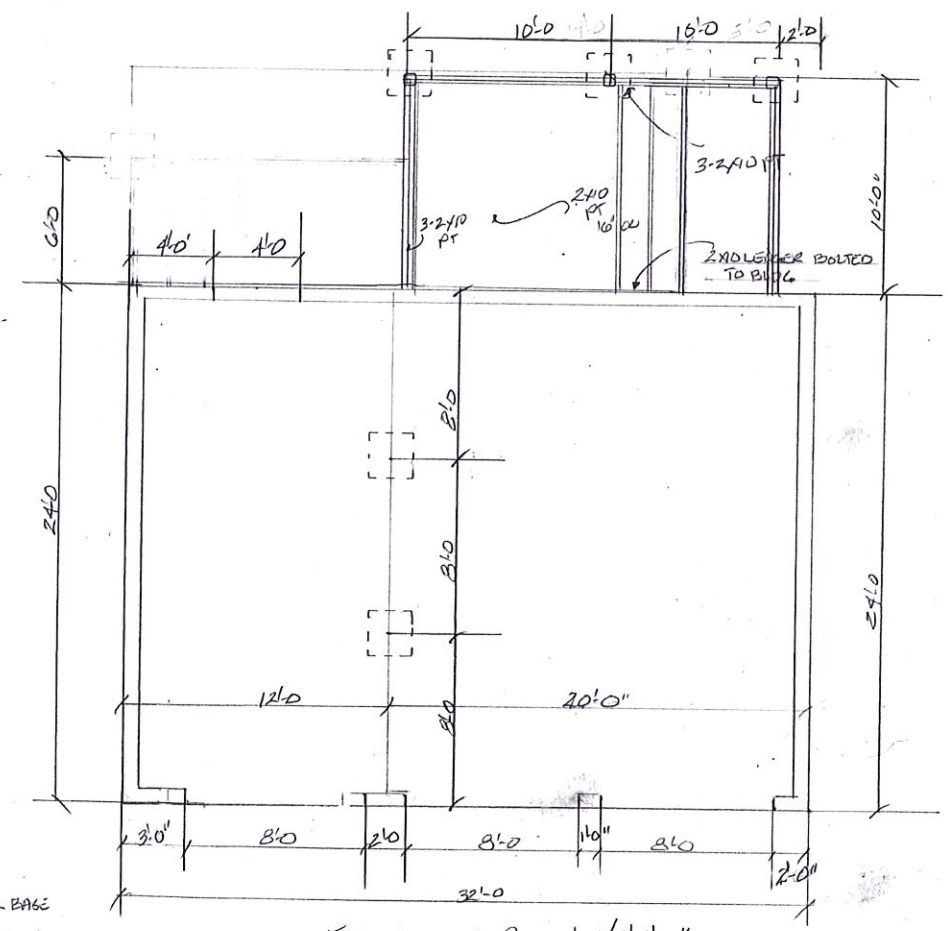
ROOF PLAN 1/4" = 1'-0"

- WINDOW/EXTERIOR DOOR
- A ANDERSEN WDH 2846 R.O 2'-10 1/8" X 4'-2 1/8"
 - B A281 R.O 2'-8" X 2'-0 5/8"
 - C CX195 WITH CHECK RAIL R.O 2'-8" X 4'-5 3/8"
 - D
 - E FWH 3168 R.O 3'-1" X
 - F WDH 2032 R.O 2'-2 1/8" X 3'-4 7/8"
 - G WTR 4101 R.O 4'-11 7/8" X 2'-1 1/2"
 - H WHD 2846 R.O 2'-10 1/8" X 4'-3 1/8"
 - I
 - J 3068 9 LITE FIBER GLASS DOOR

EAVE AND GABLE DETAIL SAME AS EXIST.



WALL SECTION
1/2" = 1'-0"



FOUNDATION PLAN 1/4" = 1'-0"

388 BANK ST. HARWICH, MA.