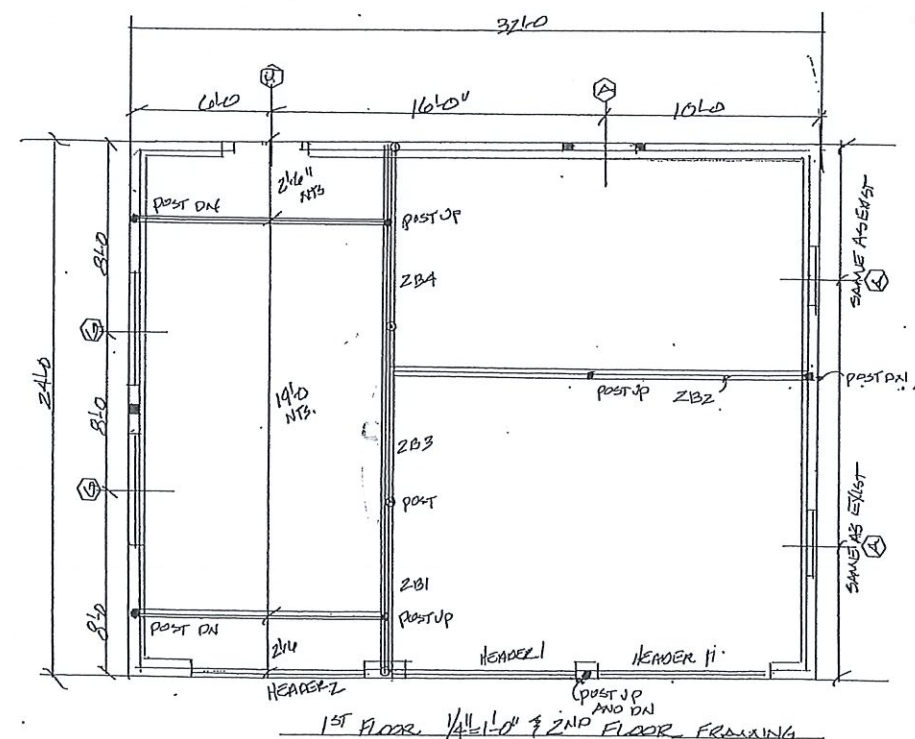
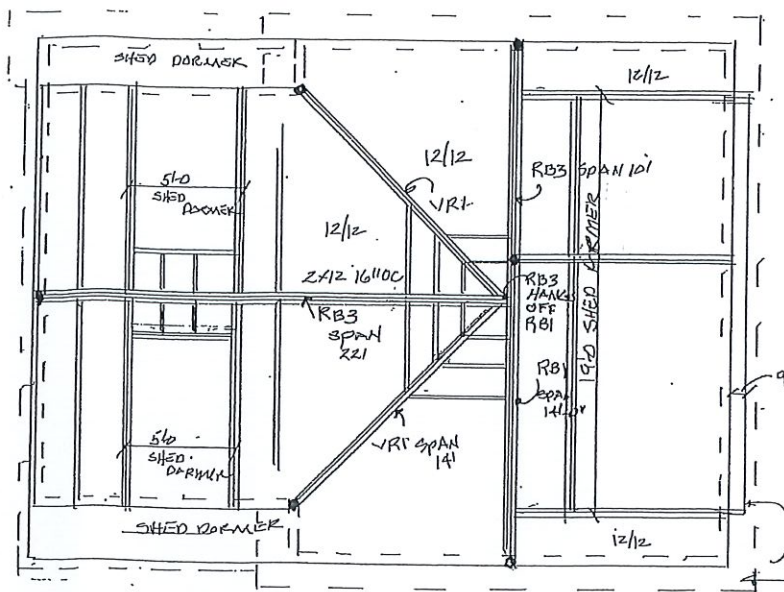


SECOND FLOOR PLAN
1/4" = 1'-0"



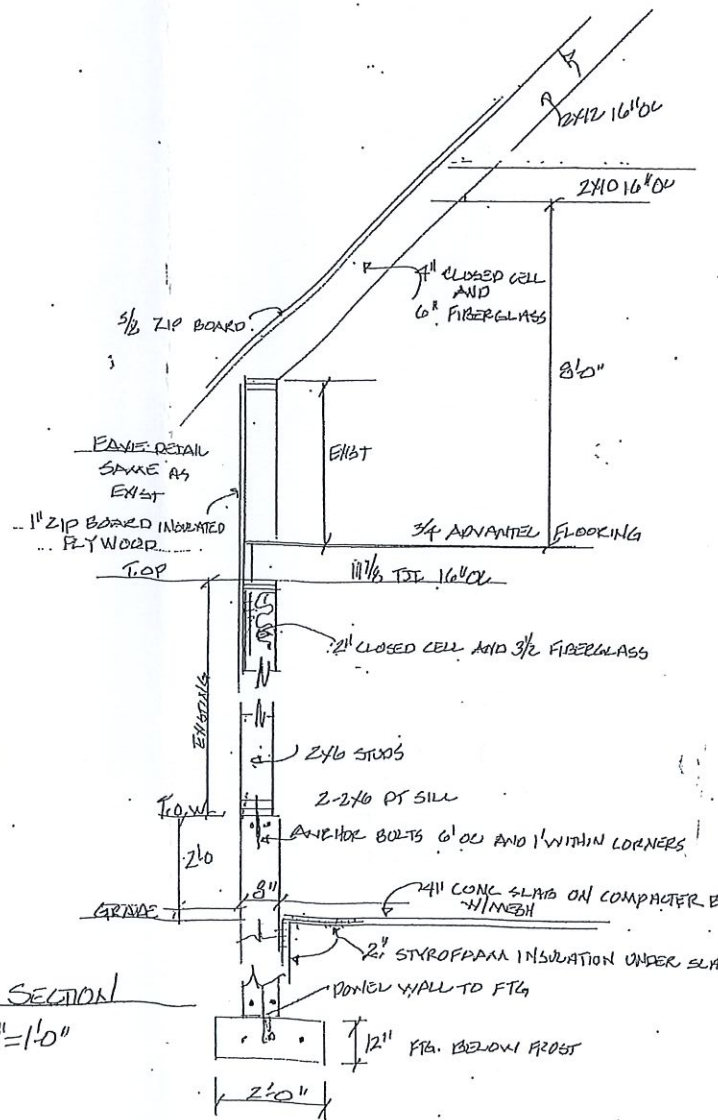
1ST FLOOR 1/4" = 1'-0" & 2ND FLOOR FRAMING



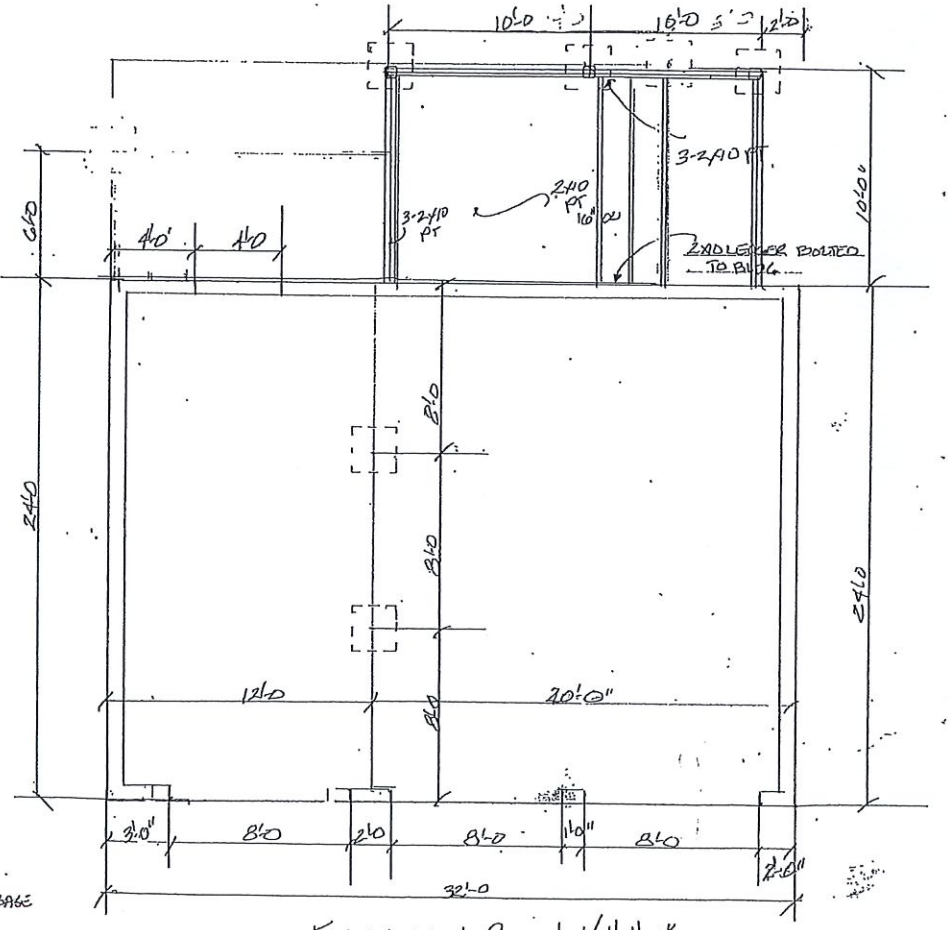
ROOF PLAN 1/4" = 1'-0"

- WINDOW/EXTERIOR DOOR
- Ⓐ ANDERSEN WDH 2846 R.O. 2'-10 1/8" X 4'-8 1/8"
 - Ⓑ A 281 R.O. 2'-8" X 2'-5 1/8"
 - Ⓒ EX 145 WITH CHECK RAIL R.O. 2'-8" X 4'-5 3/8"
 - Ⓓ
 - Ⓔ FWH 3168 AR. R.O. 3'-1" X
 - ⓫ WDH 2832 R.O. 2'-2 1/8" X 3'-4 7/8"
 - ⓬ WTR 4101 R.O. 4'-11 1/8" X 2'-1 7/8"
 - ⓭ WHD 2846 R.O. 2'-10 1/8" X 4'-8 1/8"
 - ⓮
 - ⓯ 3068 PLITE FIBER GLASS DOOR

9" SHED DORMER SOFFIT.
EAVE AND GABLE DETAIL SAME EXIST.



WALL SECTION
1/2" = 1'-0"



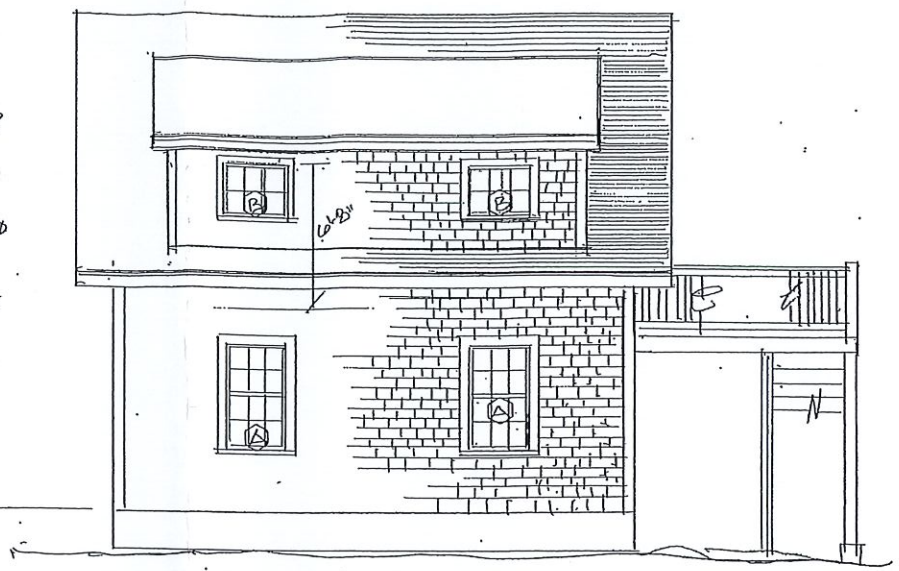
FOUNDATION PLAN 1/4" = 1'-0"

388 BANK ST. HARTWICH, MA

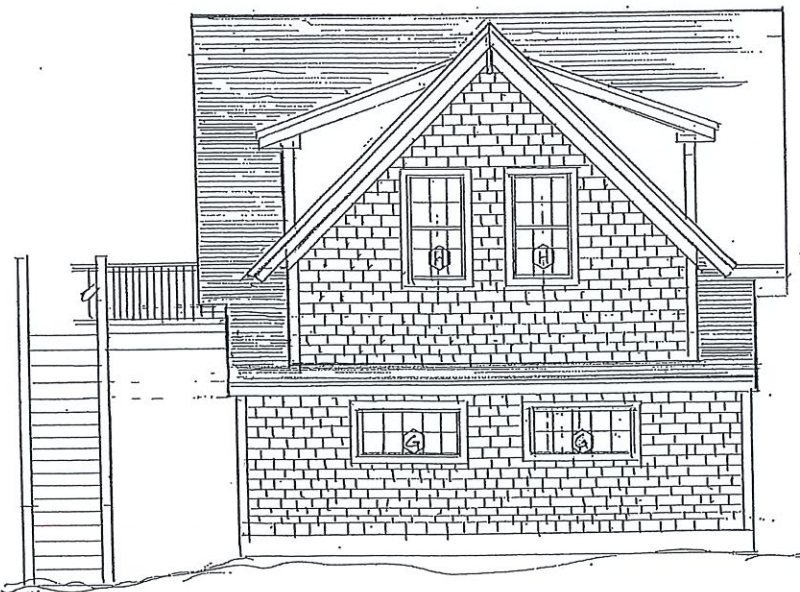
388 BANK STREET PROPOSAL #1
 GEORGE LONGO DESIGN INC. 603-744-8020



WEST ELEVATION
1/4"=1'-0"



NORTH ELEVATION
1/4"=1'-0"



SOUTH ELEVATION
1/4"=1'-0"



EAST ELEVATION
1/4"=1'-0"

GENERAL NOTES:
 ALL LOCAL CODES SHALL BE FOLLOWED.
 STRUCTURAL ENGINEERING BY OTHERS.
 EXIST. MEASUREMENTS TO BE FIELD VERIFIED.
 THIS PLAN HAS EXIST. BARN RAISED 2'± TO
 ALLOW FOR 2ND FLOOR ABOVE STEP APP.