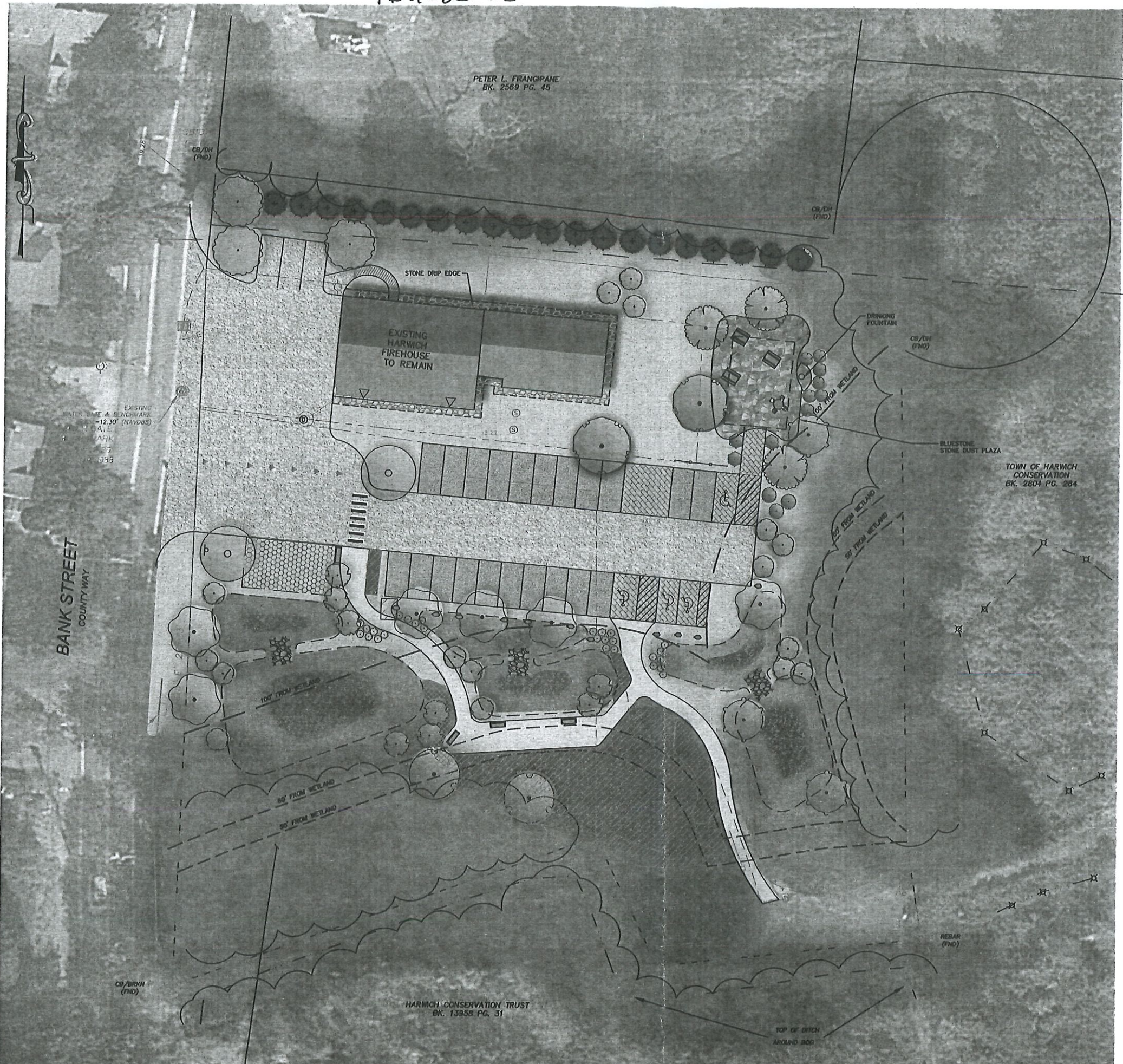


PB2023-25



RECEIVED
TOWN CLERK
HARWICH, MA
2023 JUL 24 P 12:11

BANK STREET
COUNTY WAY

PETER L. FRANGIPANE
BK. 2569 PG. 45

EXISTING
HARWICH
FIREHOUSE
TO REMAIN

DRINKING
FOUNTAIN

BLUESTONE
STONE EAST PLAZA

TOWN OF HARWICH
CONSERVATION
BK. 2804 PG. 284

100' FROM WETLAND

50' FROM WETLAND

50' FROM WETLAND

REBAR
(FND)

HARWICH CONSERVATION TRUST
BK. 13358 PG. 31

TOP OF DITCH
AROUND BOG

AREA INCLUSIVE OF CIMMAMON FERN (WETLAND)
CONTAINS LESS THAN 2,000 SQ.FT. DOES NOT
MEET HARWICH CONSERVATION THRESHOLD OF
3,600 SQ.FT. OR THE STATE REGULATIONS

**PRELIMINARY
PLAN**
(FOR DISCUSSION ONLY)

FOR THE BSC GROUP, INC. DATE
PROFESSIONAL ENGINEER

**COLD BROOK
GATEWAY PARKING &
TRAILHEAD DESIGN**

BANK STREET
IN
HARWICH
MASSACHUSETTS
(BARNSTABLE COUNTY)

**LANDSCAPE
PLAN**

FEBRUARY 24, 2023

REVISIONS:

NO.	DATE	DESC.

PREPARED FOR:



HARWICH CONSERVATION TRUST
P.O. BOX 101
SOUTH HARWICH, MA 02661
www.harwichconservationtrust.org

BSC GROUP
349 Main Street - Route 28
West Yarmouth, Massachusetts
02673
508 778 8919

© 2023 BSC Group, Inc.
SCALE: 1" = 20'
0 10 20 40 FEET

PLANT SCHEDULE

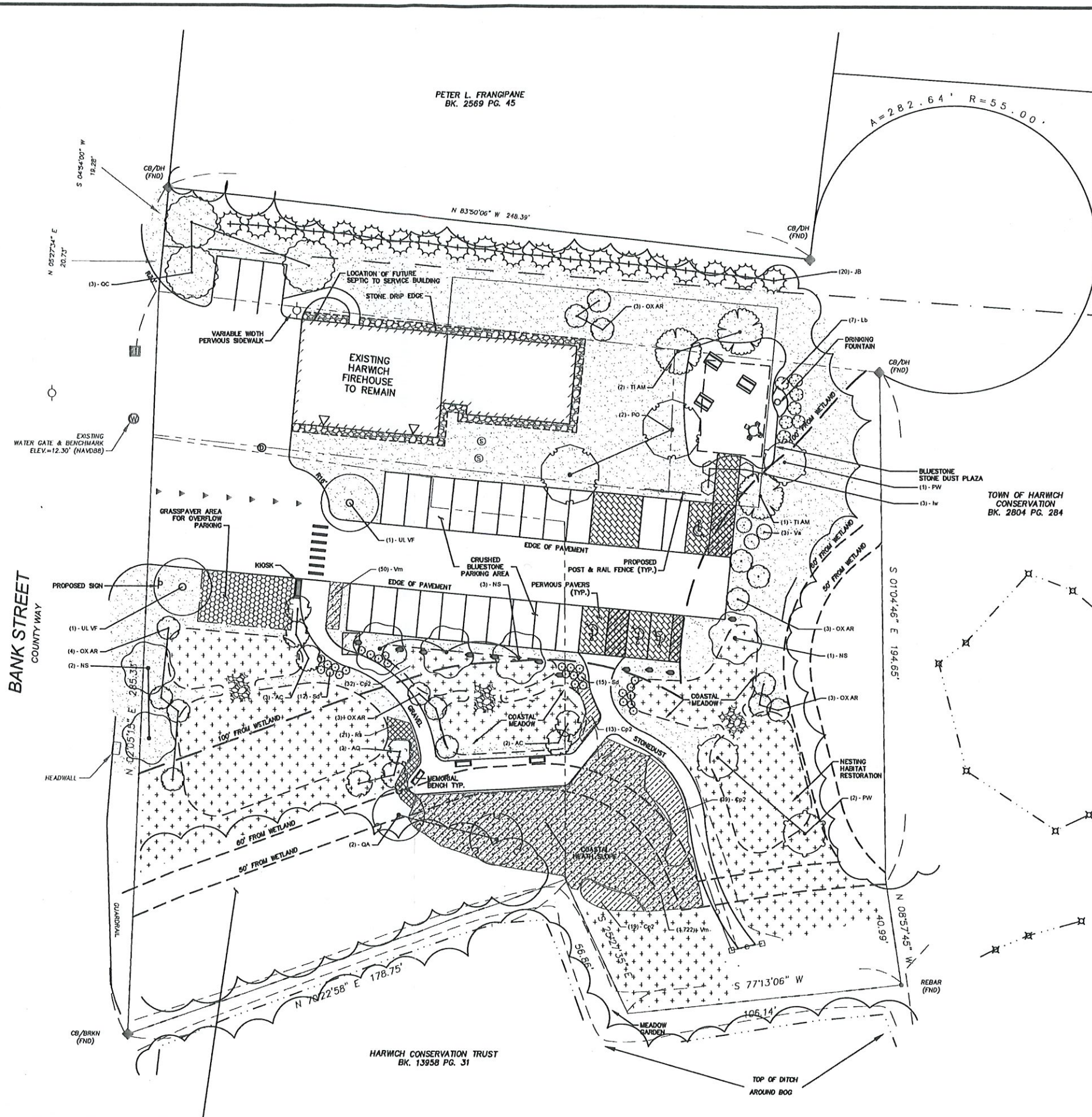
TREES	QTY	BOTANICAL / COMMON NAME	CONT	CAL	HT
AC	8	AMELANCHIER CANADENSIS / CANADIAN SERVICEBERRY	B & B	2-2.5' CAL.	
NS	8	MYSSA SYLVATICA / SOUR GUM	B & B	2-2.5' CAL.	
OX AR	16	OXYDENDRUM ARBOREUM / SOURWOOD TREE	B & B	2-2.5' CAL.	
PO	2	PLATANUS OCCIDENTALIS / SYCAMORE	B & B	2-2.5' CAL.	
PW	3	PRUNUS SEROTINA / WILD BLACK CHERRY	1 GAL		
OA	2	QUERCUS ALBA / WHITE OAK	B & B	2-2.5' CAL.	
OC	3	QUERCUS COCCINEA / SCARLET OAK	B & B	3-3.5' CAL.	
TIAM	3	TILIA AMERICANA / AMERICAN LINDEN	B & B	2.5' - 3' CAL.	
UL VF	2	ULMUS AMERICANA 'VALLEY FORGE' / AMERICAN ELM	B & B	2.5' - 3' CAL.	
EVERGREEN TREES	QTY	BOTANICAL / COMMON NAME	CONT	CAL	HT
JB	20	JUNPERUS VIRGINIANA 'BURKII' / BURK EASTERN REDCEDAR	B & B		
SHRUBS	QTY	BOTANICAL / COMMON NAME	CONT	HT	
lw	3	ILEX VERTICILLATA / WINTERBERRY	2 GAL		
lb	8	LINDERA BENZOIN / SPICEBUSH	2 GAL		
sd	27	SPIRAEA X 'NCSX2' / DOUBLE PLAY DOOZIE'S SPIREA	3 GAL		
Va	3	VIBURNUM DENTATUM / VIBURNUM	3 GAL		
GROUND COVERS	QTY	BOTANICAL / COMMON NAME	CONT		
	83	COMPTONIA PEREGRINA / SWEET FERN	1 GAL		36" o.c.
	1,739	VACCINIUM MACROCARPON / AMERICAN CRANBERRY	4" POT		18" o.c.
	21	RHUS AROMATICA 'GRD-LW' / GRG-LOW FRAGRANT SUMAC	3 GAL		36" o.c.

LAWN SEED MIX:

FLURY TALL FESCUE 30%, CORONADO TALL FESCUE 20%, ENDEAVOR FESCUE 30%, IQ PERENNIAL RYEGRASS 10%, BROOKLAWN KENTUCKY BLUEGRASS 10%

MEADOW MIX:

ASCLEPIAS SYRACA, ASCLEPIAS INCARNATA, SYMPHYSTRICHUM NOVAE ANGLIAE, CHAMAECRISTA FASCICULATA, ELYMUS CANADENSIS, ELYMUS VIRGINICUS, FESTUCA RUBRA, LUPINUS POLYPHYLLUS, RUDBECKIA LACINIATA, SCHIZACHYRIUM SCOPARIUM, SOLIDAGO JUNCEA, SORGHASTRUM NUTANS, SYMPHYSTRICHUM NOVI-BELGII, BAPTISIA TINCTORIA, DESMODIUM CANADENSE, EUTHAMIA GRAMMIFOLIA (SOLIDAGO G.), PYZNANTHEMUM VIRGINIANUM



AREA INCLUSIVE OF CINNAMON FERN (WETLAND) CONTAINS LESS THAN 2,000 SQ.FT. DOES NOT MEET HARWICH CONSERVATION THRESHOLD OF 3,000 SQ.FT. OR THE STATE REGULATIONS

PRELIMINARY PLAN
(FOR DISCUSSION ONLY)

FOR THE BSC GROUP, INC. DATE
PROFESSIONAL ENGINEER

COLD BROOK GATEWAY PARKING & TRAILHEAD DESIGN

BANK STREET
IN
HARWICH MASSACHUSETTS (BARNSTABLE COUNTY)

LANDSCAPE PLAN
FEBRUARY 24, 2023

REVISIONS:

NO.	DATE	DESC.

PREPARED FOR:

HARWICH CONSERVATION TRUST
P.O. BOX 101
SOUTH HARWICH, MA 02661
www.harwichconservationtrust.org

BSC GROUP
349 Main Street - Route 28
West Yarmouth, Massachusetts 02673
508 778 8919

© 2023 BSC Group, Inc.
SCALE: 1" = 20'
0 10 20 40 ft

FILE: YAR\5074300\C\5074300-SP.dwg
DWG: JOB. NO. 5-0743.00 SHEET OF