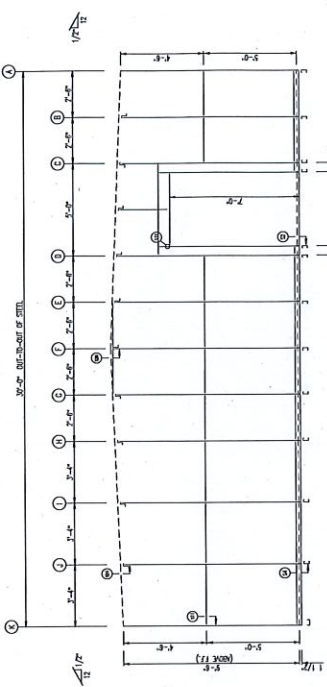
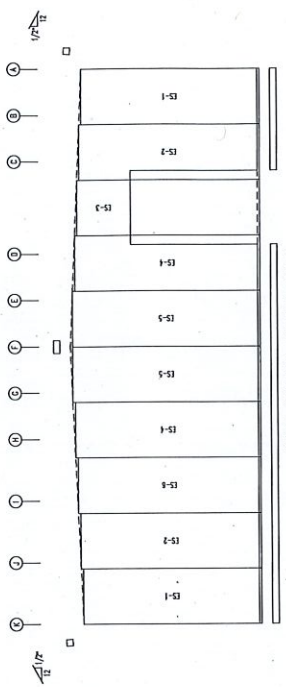


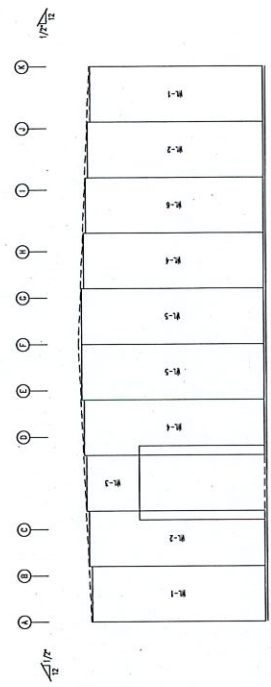
WALL INSULATION TABLE	
NO.	DESCRIPTION
1	1/2" POLYSTYRENE
2	1/2" POLYSTYRENE
3	1/2" POLYSTYRENE
4	1/2" POLYSTYRENE
5	1/2" POLYSTYRENE



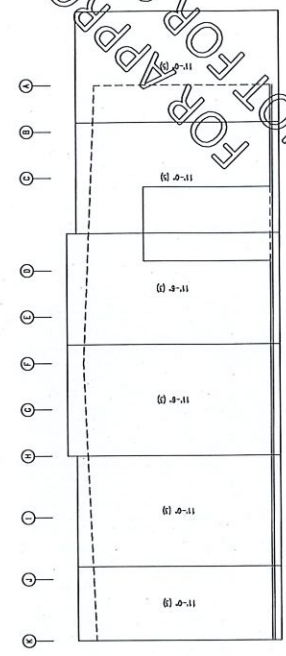
ENDWALL FRAMING FRAME LINE: 32



ENDWALL SHEETING & TRIM FRAME LINE: 32
PANELS 29 OR 30 - NOT COLOR

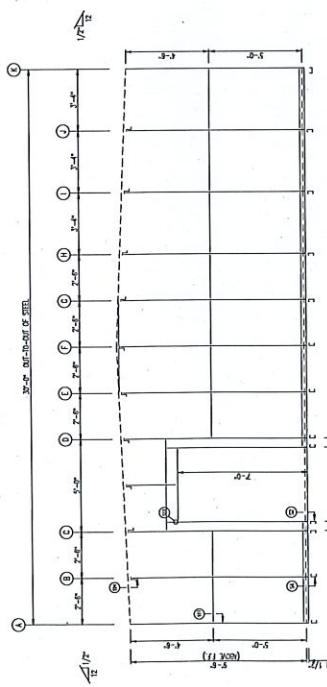


ENDWALL LINER & TRIM FRAME LINE: 32
PANELS 29 OR 30 - Colorless Plus

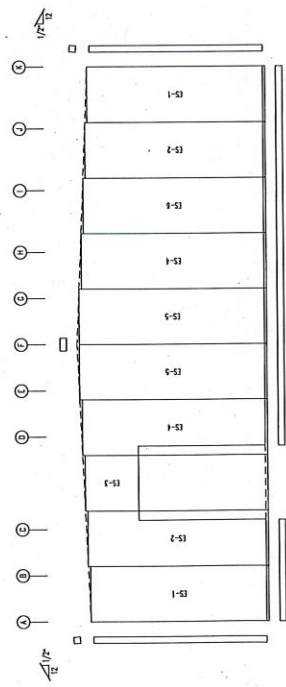


ENDWALL INSULATION FRAME LINE: 32

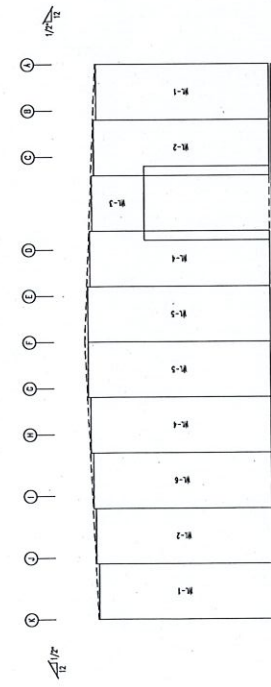
NOT FOR APPROVAL ONLY
FOR APPROVAL ONLY
FOR APPROVAL ONLY



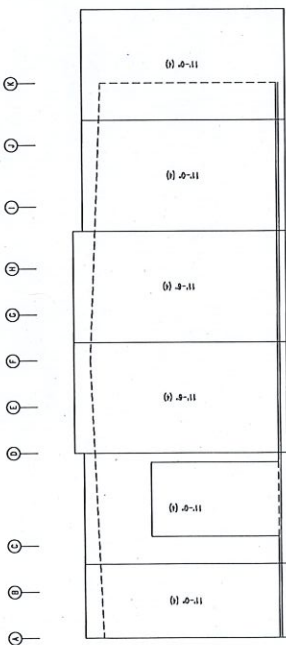
ENDWALL FRAMING FRAME LINE: 1



ENDWALL SHEETING & TRIM FRAME LINE: 1
PANELS 29 OR 30 - NOT COLOR

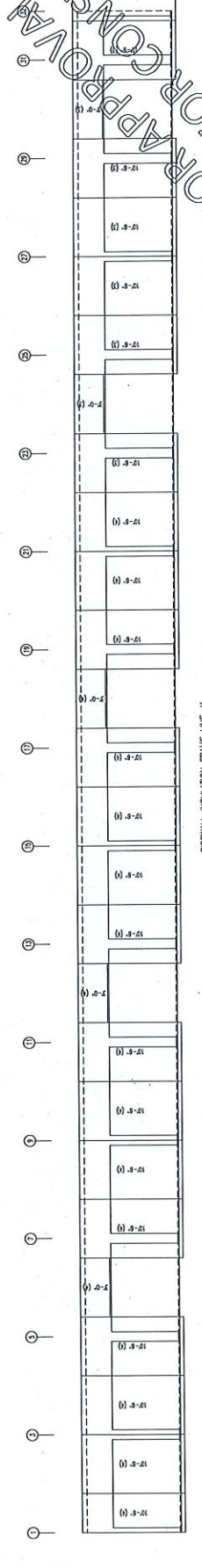
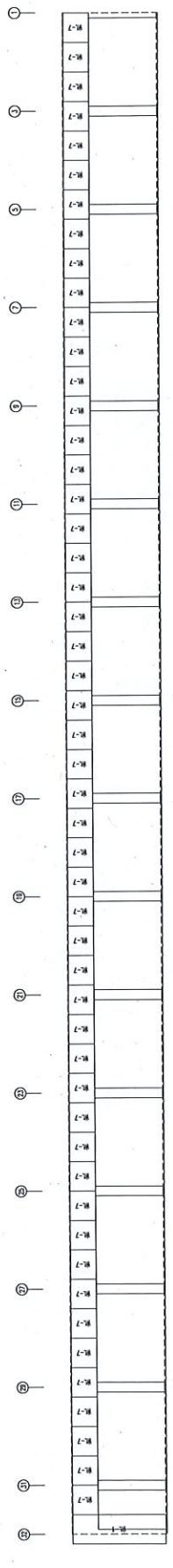
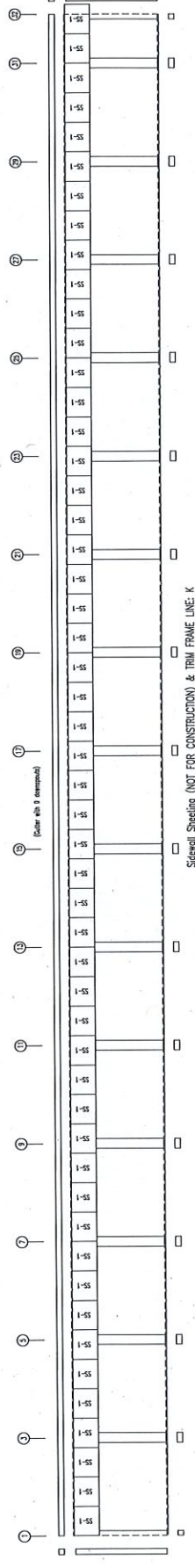
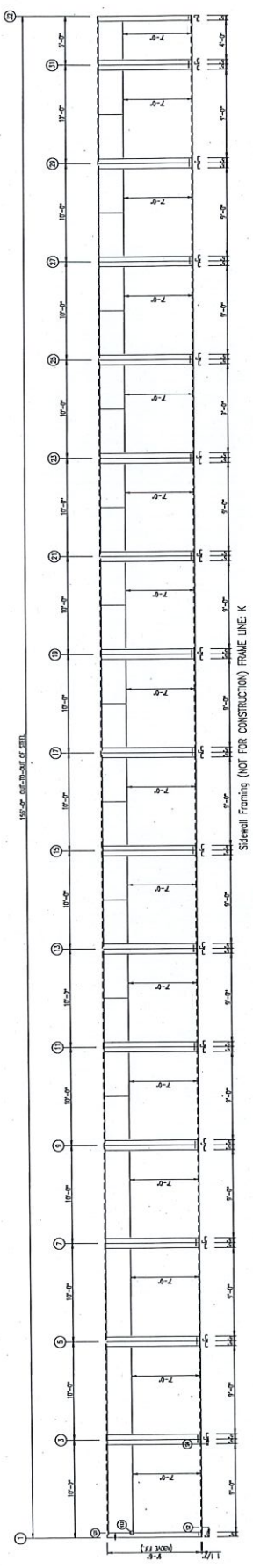


ENDWALL LINER & TRIM FRAME LINE: 1
PANELS 29 OR 30 - Colorless Plus



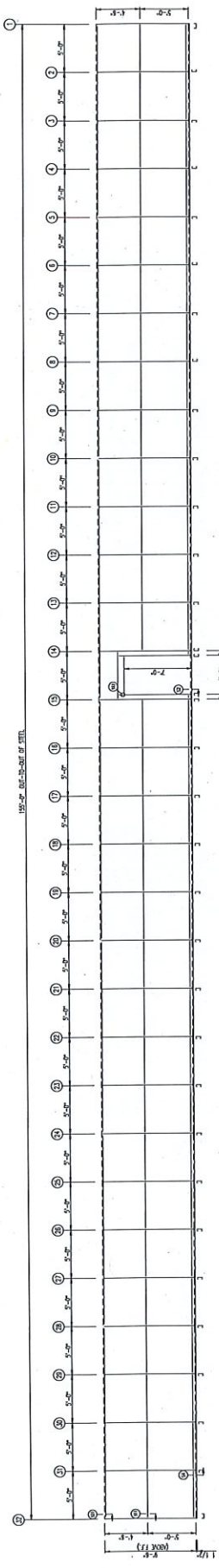
ENDWALL INSULATION FRAME LINE: 1

NO.	DATE	BY	CHKD.
1	11-27-20	JL	ML
2	12-15-20	JL	ML
3	12-15-20	JL	ML
4	12-15-20	JL	ML
5	12-15-20	JL	ML

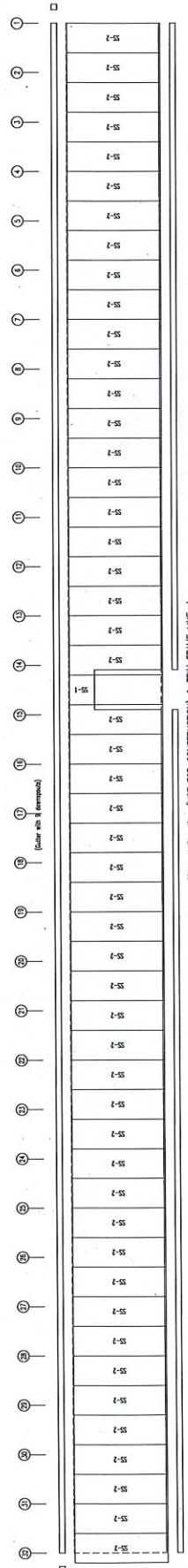


NOT FOR CONSTRUCTION
FOR APPROVAL ONLY

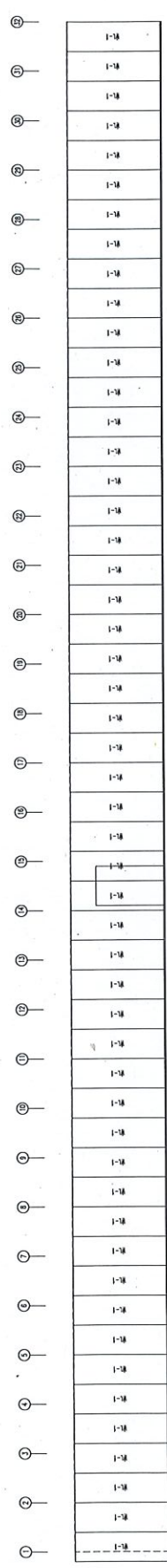
WALL POSITIONING TOLERANCE	
FINISH	± 1/8"
CONCRETE	± 1/4"
BRICK	± 1/4"
CMU	± 1/4"
STUCCO	± 1/8"
EIFS	± 1/8"
GLASS	± 1/8"
MECHANICAL	± 1/4"
PLUMBING	± 1/4"
ELECTRICAL	± 1/4"
MECHANICAL	± 1/4"
PLUMBING	± 1/4"
ELECTRICAL	± 1/4"



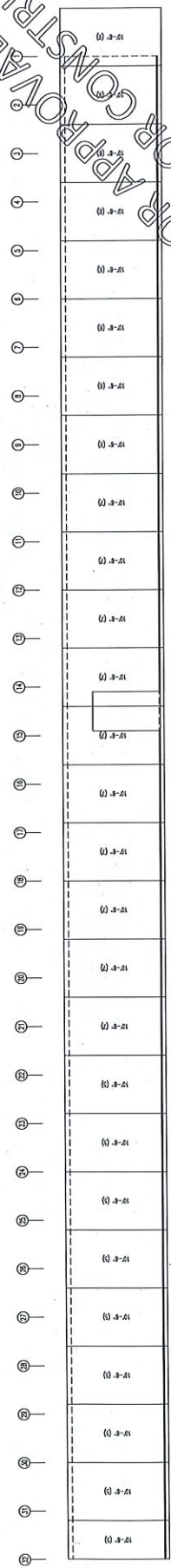
Sidewall Framing (NOT FOR CONSTRUCTION) FRAME LINE: A



Sidewall Sheeting (NOT FOR CONSTRUCTION) & TRIM FRAME LINE: A
FINISH TO O.C. - NOT COLOR

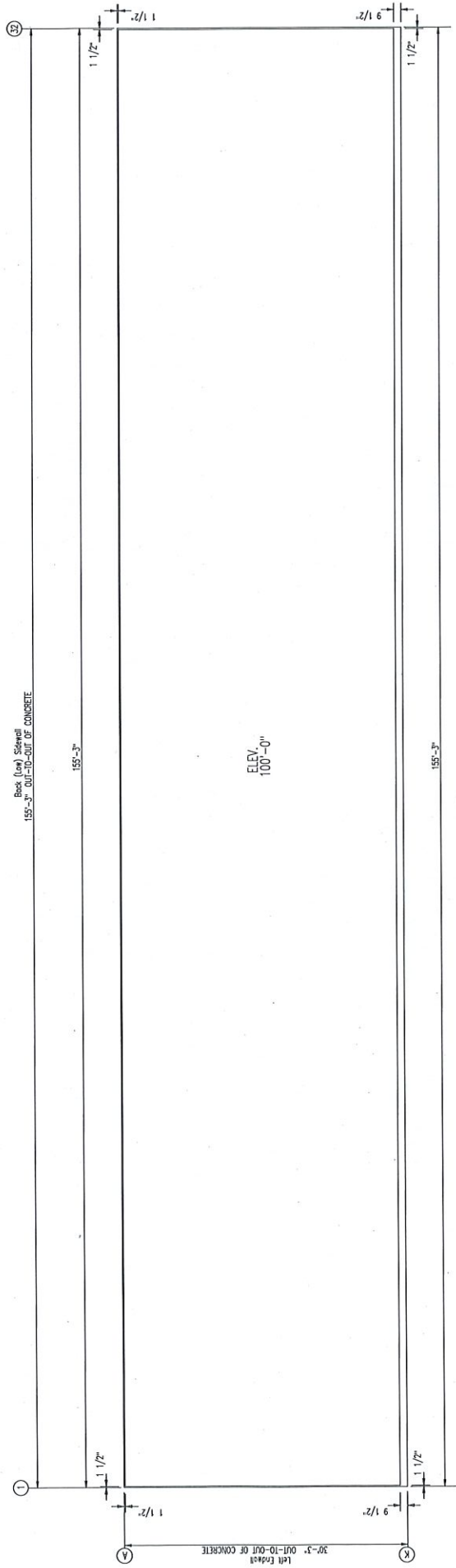


Sidewall Liner & Trim Frame LINE: A
FINISH TO O.C. PP - Concrete Plus

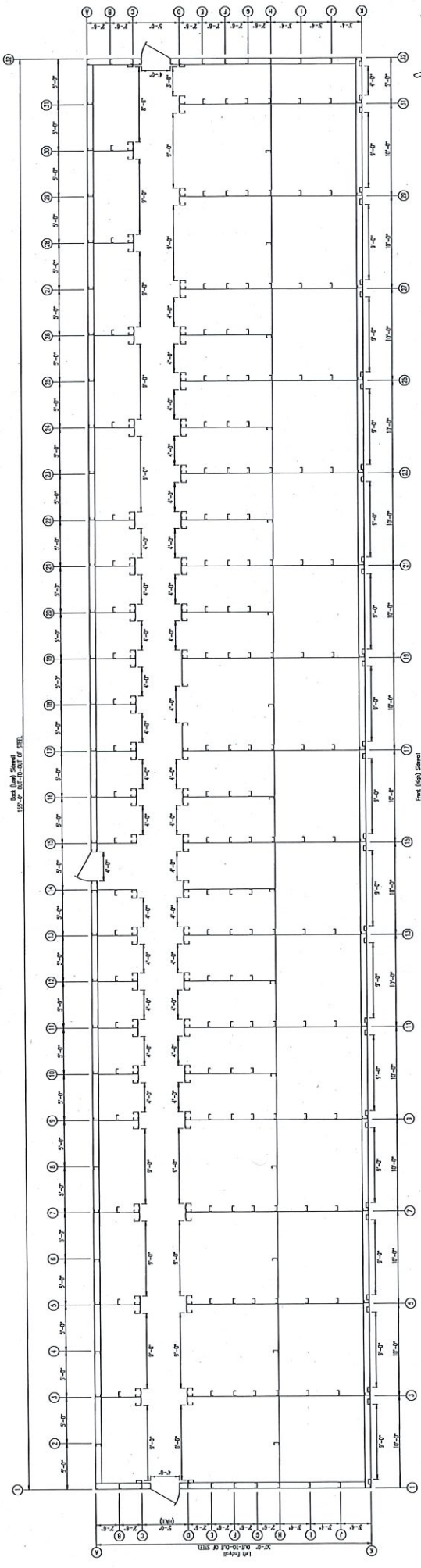


Sidewall Insulation Frame LINE: A

NOT FOR APPROVAL ONLY
NOT FOR CONSTRUCTION



FOR APPROVAL ONLY
NOT FOR CONSTRUCTION

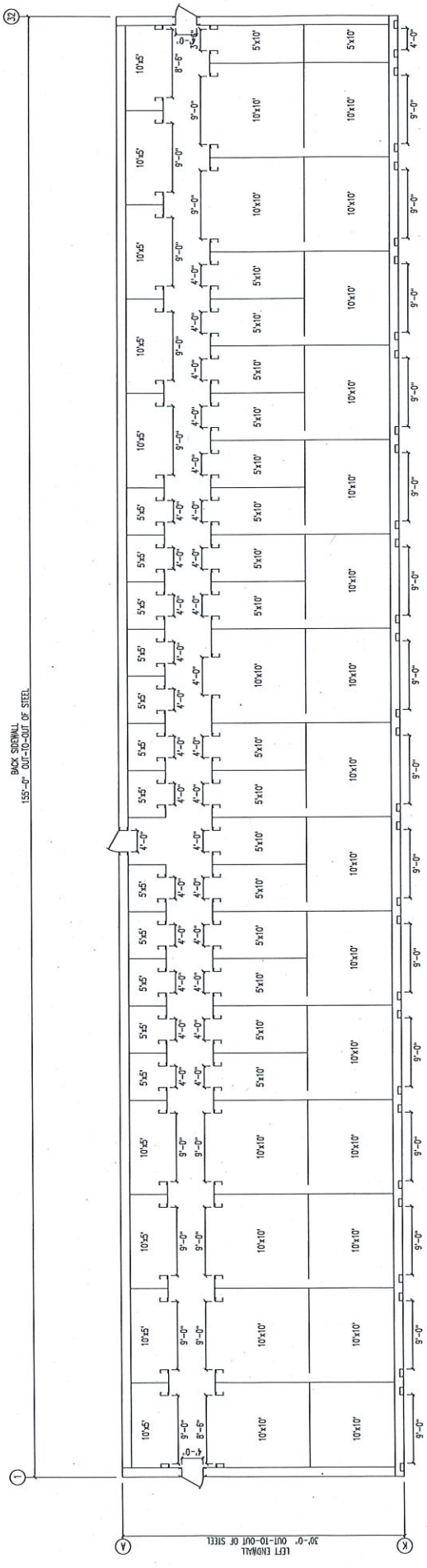


Scale 1/8" = 1'-0"

From (Opp) Street

FLOOR PLAN

FOR APPROVAL ONLY
NOT FOR CONSTRUCTION



BACK SIDEWALL
155'-0" OUT-TO-OUT OF STEEL

LEFT ENDWALL
30'-0" OUT-TO-OUT OF STEEL

RIGHT ENDWALL

FRONT SIDEWALL
FLOOR PLAN

FOR APPROVAL ONLY
NOT FOR CONSTRUCTION