

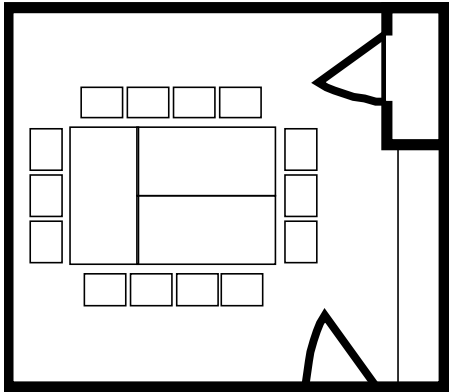
Room Set-Up Options

**For custom set-ups, see Custom Room Set-Up Form

Set-Ups for Room 1

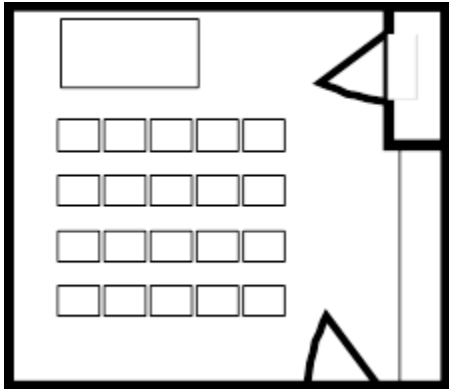
A1:

Seating for 14 people, with 3 tables



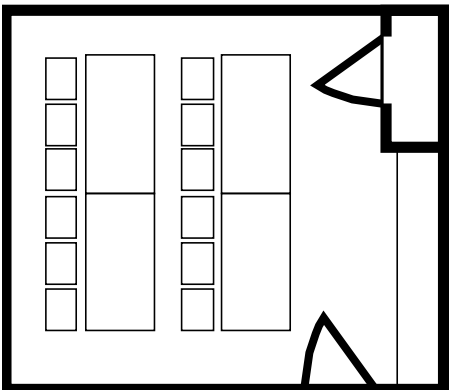
A2:

Seating for 20 people, with 1 table



A3:

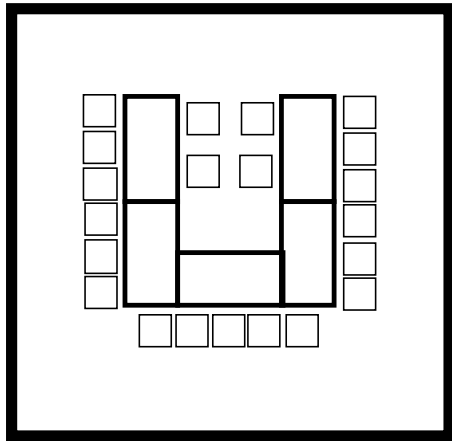
Seating for 12 people, with 4 table



Set-Ups for Rooms 2, 3, 4, 5 & Center Room

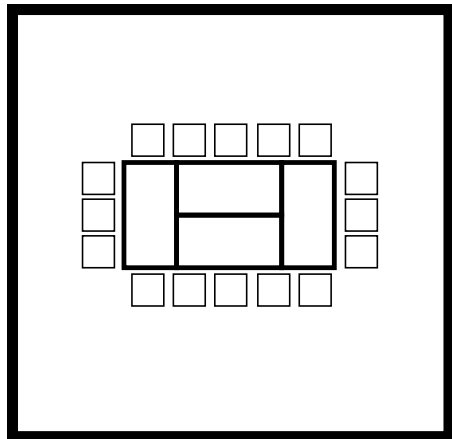
B1:

Seating for 21, with 5 tables



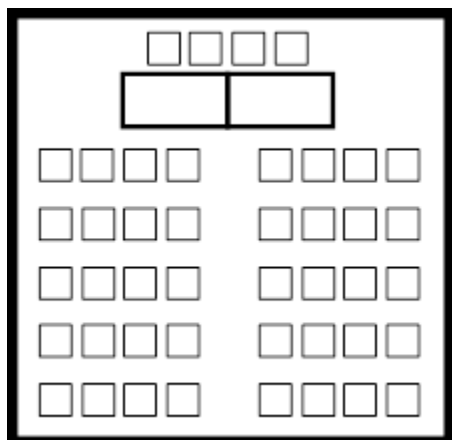
B2:

Seating for 16, with 4 tables



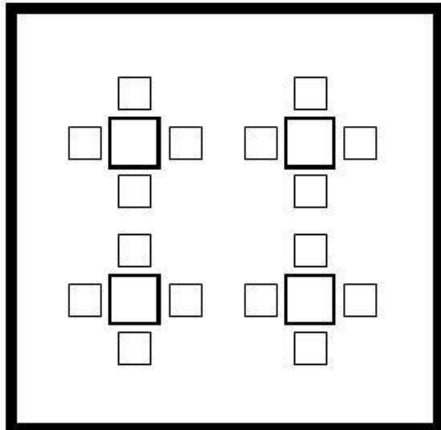
B3:

Seating for 44, with 2 tables



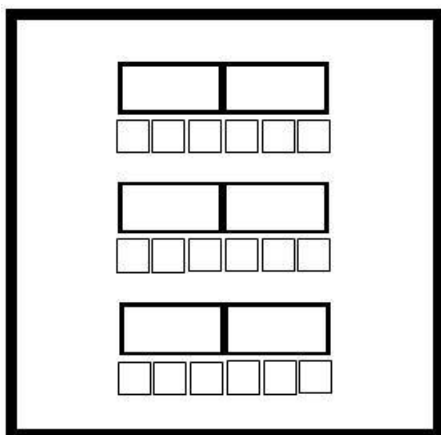
B4:

Seating for 16, with 4 card tables



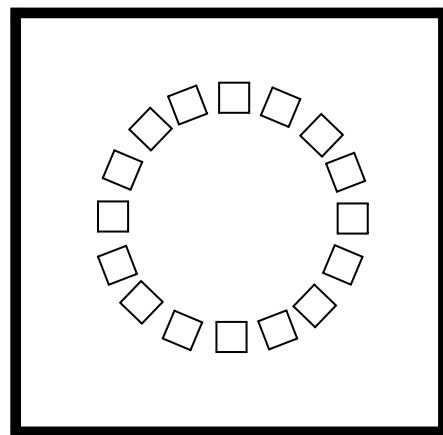
B5:

Seating for 18, with 6 tables



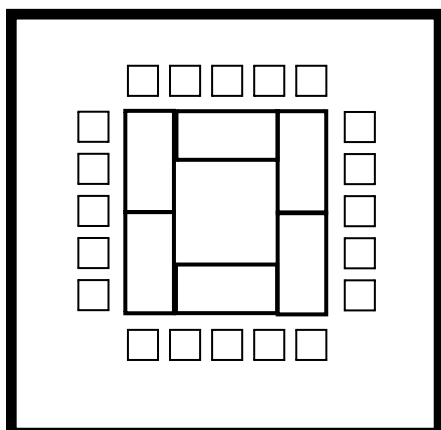
B6:

Chairs in a circle



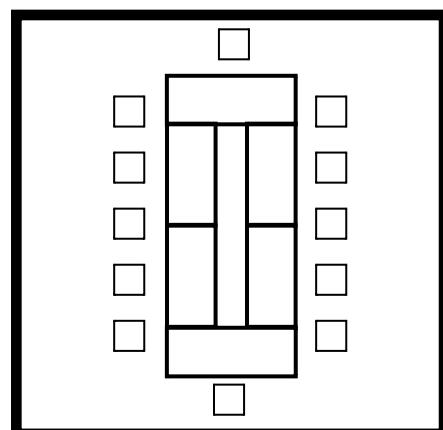
B7:

6 tables in a square, with chairs surrounding



B8:

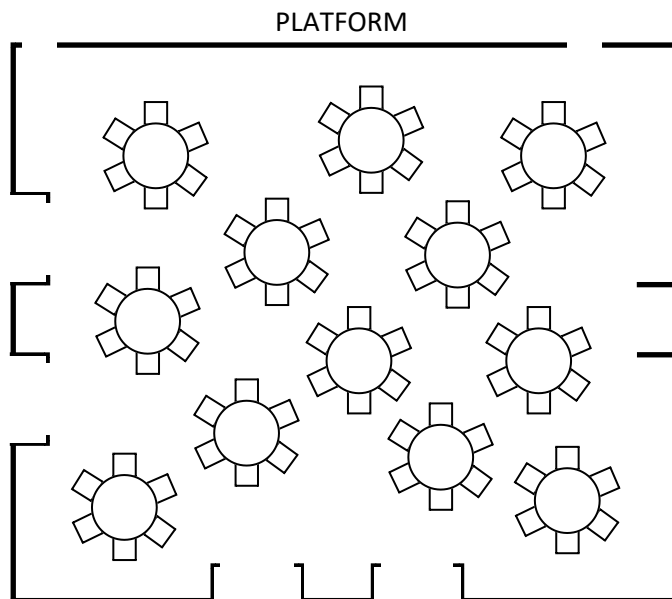
6 tables in a rectangle, with chairs surrounding



Set-Ups for Multi-Purpose Room

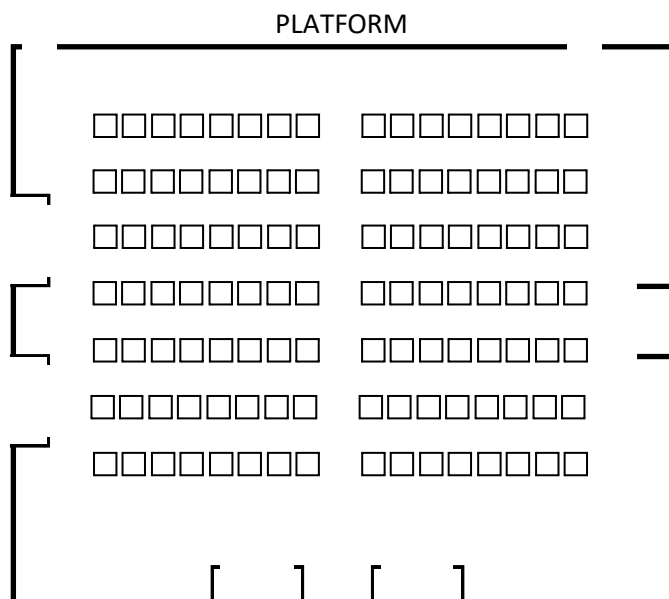
M1:

Seating for 72, with 12 round tables (6 chairs per table):



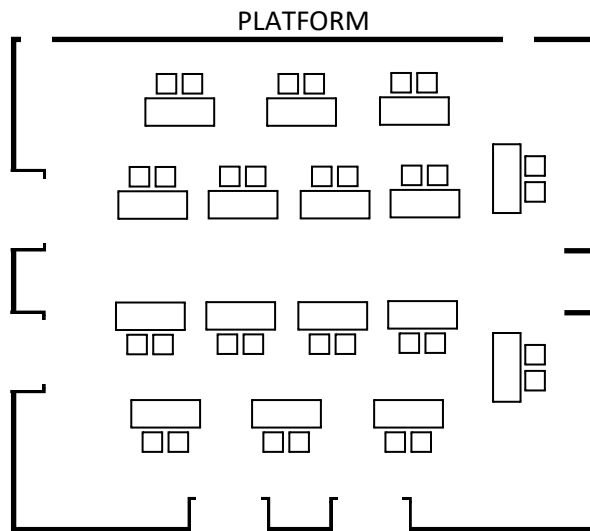
M2:

Rows of chairs, seating for 112



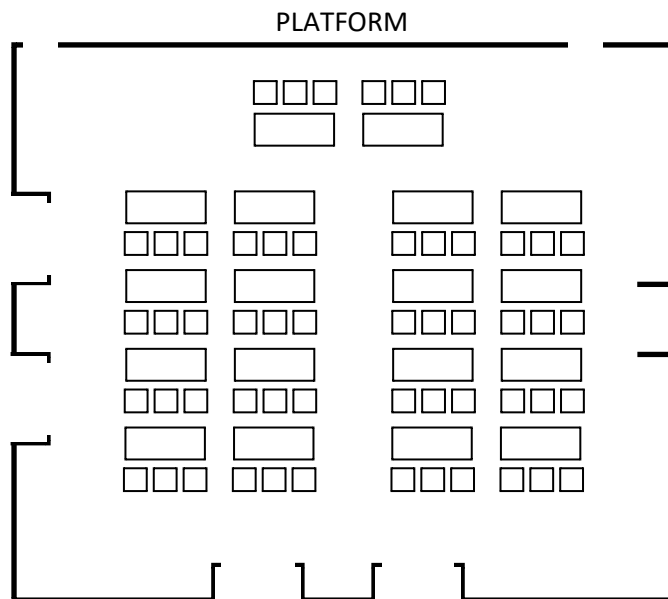
M3:

Seating for 32, with 16 tables



M4:

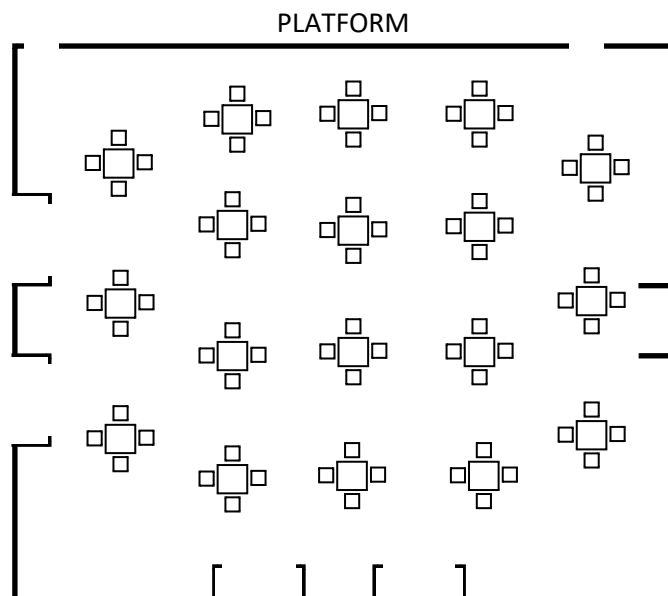
Seating for 54, with 18



M5:

Seating for 72, with 18 card tables maximum.

Please note: The Community Center has 10 card tables. The additional tables must be supplied by the group.



Set-Ups for Gymnasium

G1:

